

WALDO

PRIMO[®]

...BECAUSE YOUR
TIME IS VALUABLE.



TIME-SAVING & INNOVATIVE
ELECTRICAL INSTALLATION MATERIALS

MONOVATOR

PRIMO[®]

...BECAUSE YOUR
TIME IS **VALUABLE.**

PRIMO



WHO WE ARE

About PRIMO

PRIMO has set itself the goal of revolutionizing the manual trades with innovative products. In doing so, we are ensuring that work on the building site is fun and profitable again, because our heart beats for electrical installation. Having arisen from a family-owned electrical installation business, we know the problems at first hand – after all, we have experienced the daily hard work ourselves.

How often have we had to carry sacks of plaster up to the third floor or sprained our fingers when wiring? At that time, large subsequent payments on account of search drilling prompted us to develop the first ideas of our own in order to prevent repetitions.

Once our own creations had proven to make perfect sense, we really wanted to share them with the industry. The reaction was consistently positive.

On account of our experience, you will only find products in our range that we would use ourselves and that provide genuine added value! Our time-saving innovations, which can be used several times and are easy to handle, will help you to counteract the shortage of skilled labour.

Not only that, in us you gain a partner who listens to you and understands your problems. Our service extends far beyond the sale of products.



CONTENT

TABLE OF CONTENTS

Cavity Wall Installation	06	Installation Housings	62
KliQ-Fixx Cavity Wall Device Box	08	XL-Series Installation Housing	64
Qnect Cavity Wall Device Box	12	Uni-Flexx for XL 150	68
Qnect Cavity Wall Soundproof Box	16	XL-Series: Accessories	70
UniQ Cavity Wall Device Box	18		
Cable Holder	24	Wall and Ceiling Transitions	74
Multi Box	26	C-Series Wall and Ceiling Transitions	74
		C-Series Sleeves and Grommets	75
Flush-Mounting Installation	28	Formwork Protector Quickstar	76
Thermo Box	30	End and Transition Grommets & Wall and Ceiling Sleeves	77
Thermo Box Plus	36		
Universal Plaster Cover	40	Tools and Accessories	78
Drill Cover	41	Bohr-Fixx	79
Leveling Rings	41	Drilling Template	80
External Thermal Insulation Composite System	42	Ladder Sock	80
Equipment Carrier	43	High-Speed Drill	81
Multi Box	44	Nailer	82
Primoclip	45	Box Cutter	82
		Pull Line Blower	83
Concrete Boxes	48	Concrete Conduit	84
M-Series Membrane Boxes	50	Conduit	85
CEE-Box	54	Cable Dispenser	85
Universal Junction Box with membrane	58		
Concrete Box 2.0	60	List of keywords	86
Concrete Wing Box 2.0	61	List of article numbers	88
		General Terms and Conditions of Business	90

MADE IN GERMANY



For quality and sustainability

Our products stand for quality "Made in Germany" and have received multiple awards, including the Bavarian State Prize and the Red Dot Award.

When selecting partners and suppliers, we place a strong focus on regional and local providers in order to ensure sustainable business.

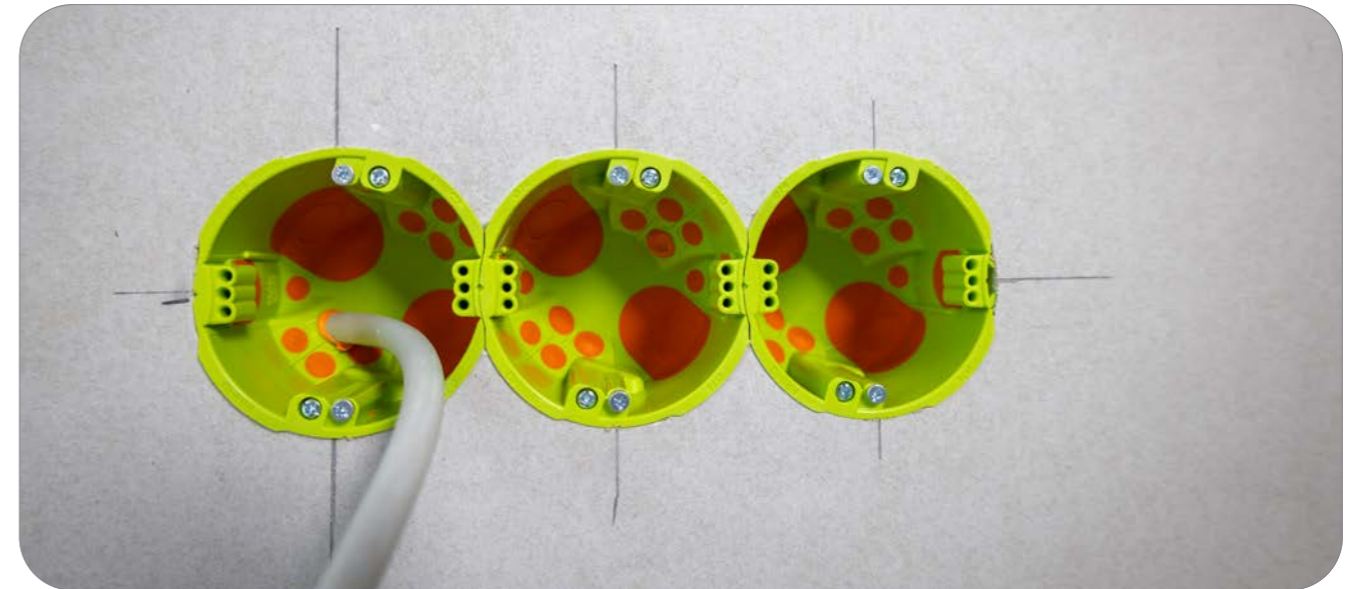
01



CAVITY WALL
INSTALLATION

THE NEW DIMENSION OF CAVITY WALL BOXES

Q-Series



FAST ASSEMBLY

No more fiddling! Thanks to the 74 mm diameter and our SCS connection technology, the Q-Series boxes can be firmly connected to one another. Multiple combinations are created in seconds, and the tedious wiring with connecting pieces is a thing of the past.

MORE SPACE

The large diameter of 74 mm also provides more installation space in the box. Due to its rectangular design, the UniQ Cavity Wall Device V-Box offers even more space and can also be used as an electronics box.

AIRTIGHT

Both the Qnect and the UniQ Cavity Wall Boxes are airtight and thus support an energy-efficient installation.

HALOGEN-FREE

The entire Q-Series is made entirely of halogen-free materials. This makes it ideal for use in public buildings or other construction projects with corresponding regulations.

KLIQ-FIXX CAVITY WALL DEVICE BOX

The fastest Cavity Wall Box in the world

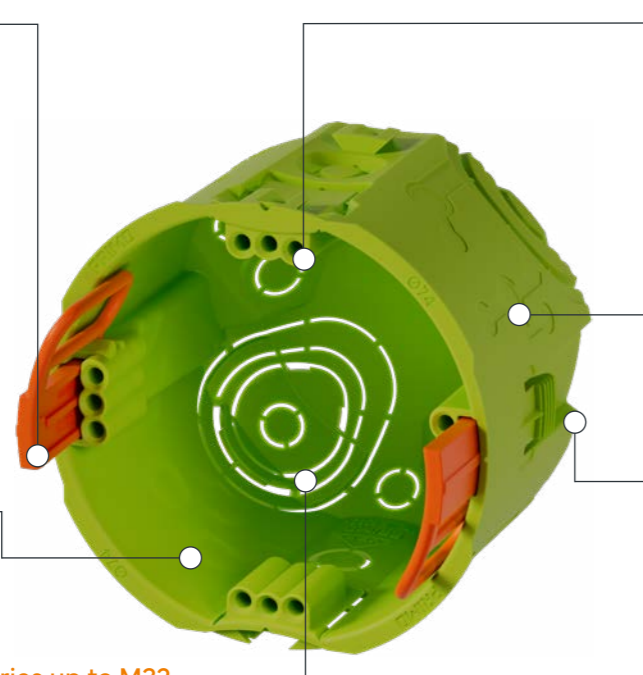
Tool-free quick assembly thanks to the click system

- + Installation without screws
- + Fixing in the drywall by pressing in the two pre-assembled wedges
- + Boxes can be disassembled by removing the wedges

74 mm drill hole

- + Significantly more installation space

Combination conduit entries up to M32



4x3 screw domes

- + Individual alignment of built-in devices
- + Suitable for wall thicknesses of 25 mm

Halogen-free

SCS connection technology

- + Stable connection
- + 71 mm combination spacing
- + Easy through-wiring
- + Easy installation of pre-wired devices



Designation	Article no.	PU	OC	PL	Price unit	Price in €
KliQ-Fixx Cavity Wall Device V-Box 62 mm	P295	25	200	4,000	100 pcs	235.00
KliQ-Fixx CWB-Set-1	P295S	1	1	20	1 pcs	431.67

Accessories for die KliQ-Fixx Cavity Wall Device Box	Article no.	PU	OC	PL	Price unit	Price in €
Drilling Template for the Cavity Wall Device Box 74 mm	P102-74	1	-	-	1 pcs	71.75
Carbide Diamond Hole Saw 74 mm	P797HD-74	1	-	-	1 pcs	45.50
Hole Saw 74 mm for Bohr-Fixx	P797-74	1	-	-	1 pcs	25.96
Edge Countersink 74 mm	P779-03	1	-	-	1 pcs	13.35
Bohr-Fixx Set 74 mm	P794-74	1	-	-	1 pcs	150.85
Bohr-Fixx and Drilling Template Set 74 mm	P857-74	1	-	-	1 pcs	409.47

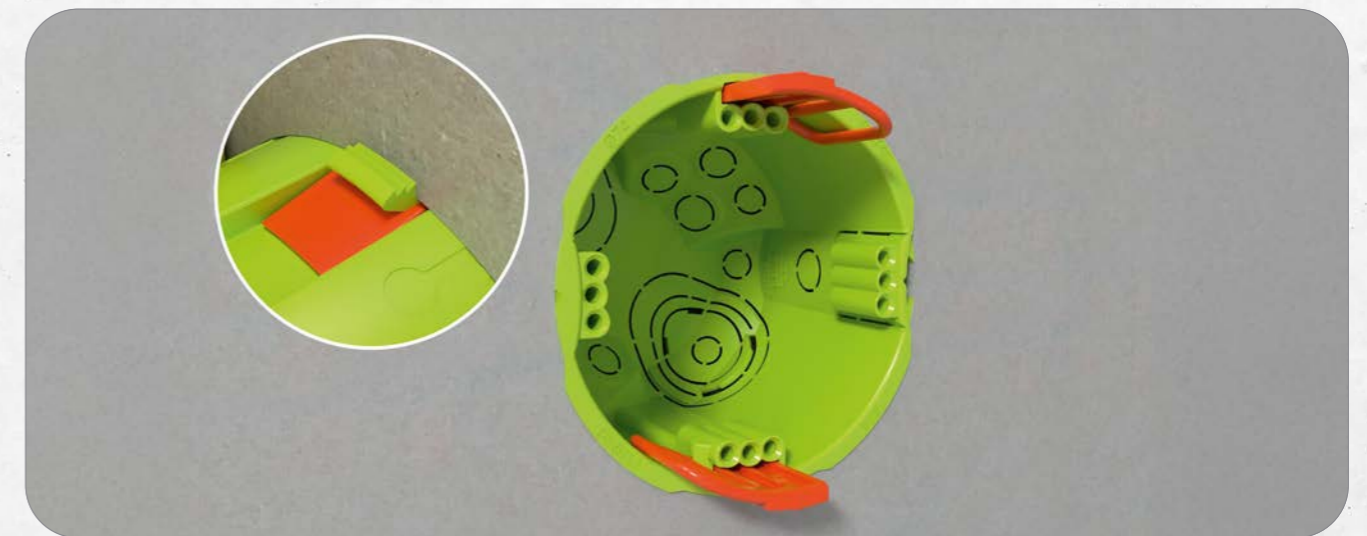
Dimensions	
Depth	62 mm
Diameter	74 mm
Drill hole size	74 mm
Membrane cable entries	10 entries (3x 3x1,5² 3x 3x2,5²/5x1,5² 4x 5x2,5²/7x1,5²)
Conduit entries	2x to M32
Suitable for panel thickness	25 mm

How to use

Scan or click for further information



KLIQ-FIXX Click and done



Significant time savings thanks to the click system: Insert the KliQ-Fixx (P295) into the hole and press in the pre-assembled wedges for quick installation. The wedges grip firmly and securely fix the box in the wall. Finger tabs allow for easy removal.



Suitable for OSB boards, wood panels and plasterboard.

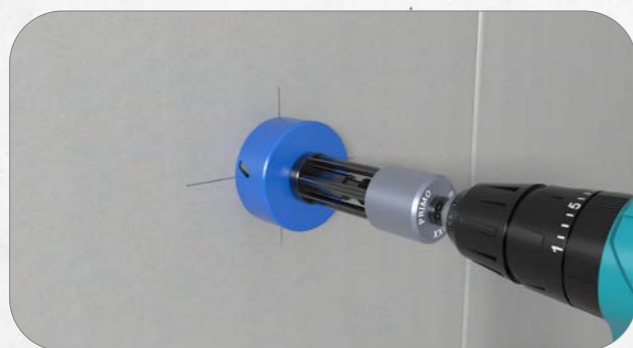
Installation instructions overleaf →

Installation instructions

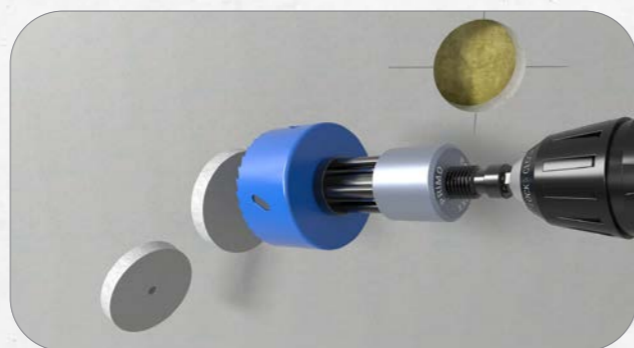
KLIQ-FIXX

Instantly fixed with one click

Scan or click
for further
information



1. Mark the first box and drill a 74 mm hole.



2. Easy removal of drill cores using Bohr-Fixx (P779).



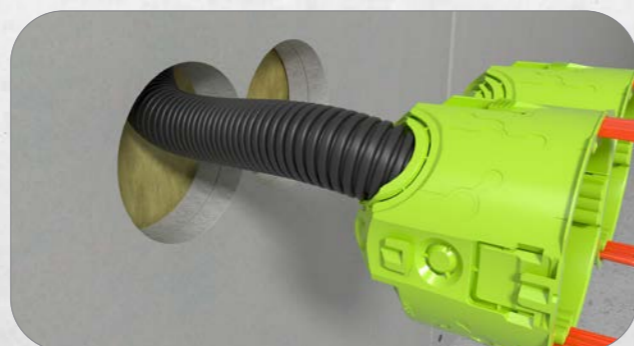
3. For multiple combinations, insert the Drilling Template (P102-74) into the first hole. Align it using the integrated spirit level and tighten the lever. By repositioning the Template, drill any number of additional holes at the standardized 71 mm spacing.



4. Before inserting, connect the boxes to one another using the stable SCS connection technology.



5. Open the conduit entries with a screwdriver.



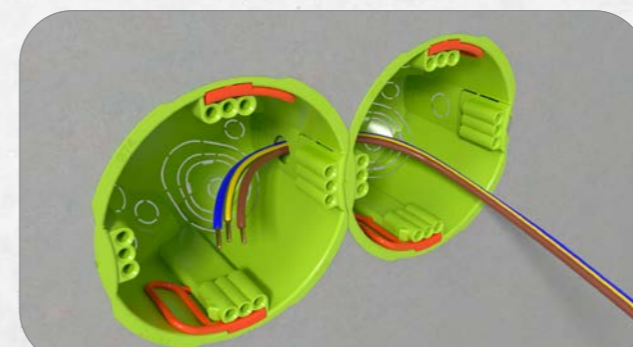
6. Insert the conduit, the knockout opening secures the conduit.



7. Insert the boxes into the drilled holes and press in the wedges.



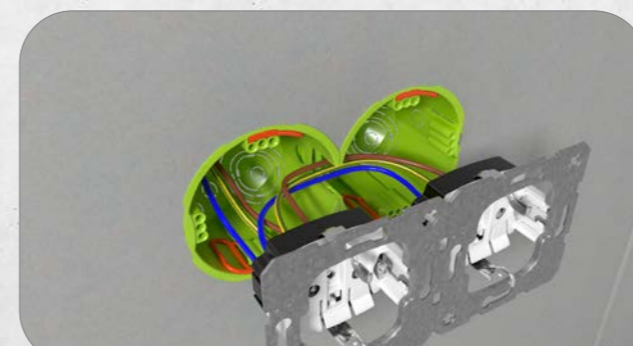
8. Click System: By pressing in the wedges, the box is fixed in the drywall panel.



9. Simple and time-saving through-wiring thanks to large knock-out opening.



10. If necessary, the SCS connection bridge can be broken out.



11. Pre-wired devices can be installed very easily.



12. Complete installation.

QNECT CAVITY WALL DEVICE BOX

Fumble better, hole faster

Halogen-free

Membrane technology with Cable-Plopp
+ Insert cables completely without tools

Airtight

Large-area connection membrane for easy through-wiring
+ Airtight through-wiring
+ No connecting pieces required

SCS connection technology
+ Firm connection
+ Easy airtight through-wiring
+ Quick installation of multiple combinations

Three screw domes
+ Individual alignment of built-in appliances
+ More flexibility during installation

74 mm drill hole
+ More installation space
+ Possibility of a firm connection with a combination spacing of 71 mm



Designation	Article no.	PU	OC	PL	Price unit	Price in €
Qnect Cavity Wall Device Box 49 mm	P200-01	25	200	4,000	100 pcs	265.57
Qnect Cavity Wall Device V-Box 62 mm	P201-01	25	200	4,000	100 pcs	285.71
Qnect HWD-Set-1	P201-01-S	1	1	20	1 pcs	515.00

Accessories for the Qnect Cavity Wall Device Box	Article no.	PU	OC	PL	Price unit	Price in €
Drilling Template for the Cavity Wall Device Box 74 mm	P102-74	1	-	-	1 pcs	71.75
Carbide Diamond Hole Saw 74 mm	P797HD-74	1	-	-	1 pcs	45.50
Hole Saw 74 mm for Bohr-Fixx	P797-74	1	-	-	1 pcs	25.96
Edge Countersink 74 mm	P779-03	1	-	-	1 pcs	13.35
Bohr-Fixx Set 74 mm	P794-74	1	-	-	1 pcs	150.85
Bohr-Fixx and Drilling Template Set 74 mm	P857-74	1	-	-	1 pcs	409.47

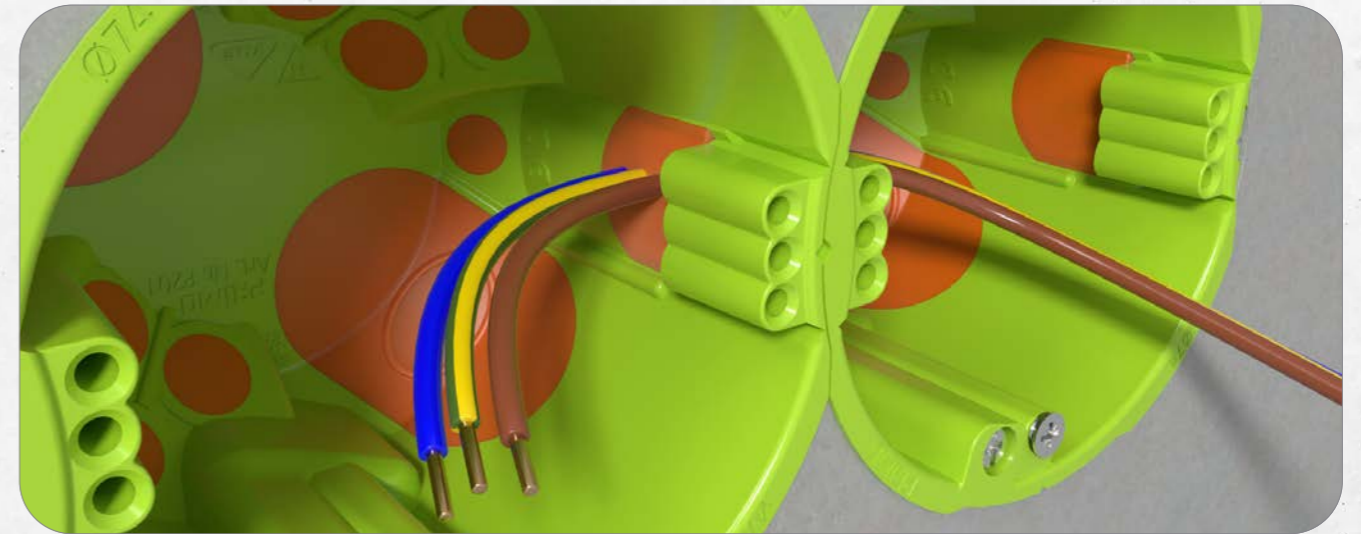
Dimensions	P200-01	P201-01
Depth	49 mm	62 mm
Diameter	74 mm	74 mm
Drill hole size	74 mm	74 mm
Membrane cable entries	6 entires (2x 3x1,5² 2x 3x2,5²/5x1,5² 2x 5x2,5²/7x1,5²)	10 entires (3x 3x1,5² 3x 3x2,5²/5x1,5² 4x 5x2,5²/7x1,5²)
Membrane conduit entries	2x to M25	2x to M25
Suitable for panel thickness	0 – 37 mm	0 – 37 mm

How to use

Scan or click for further information



QNECT Cavity Wall Boxes installed in a flash



The Qnect Cavity Wall Boxes are available with a depth of 62 mm (P201-01) or 49 mm (P200-01). They can all be combined thanks to the SCS connection technology. The large-area connection membrane allows for through-wiring without connecting pieces.



Suitable for OSB boards, wood panels, plasterboard and metal.

Installation instructions overleaf →

Installation instructions

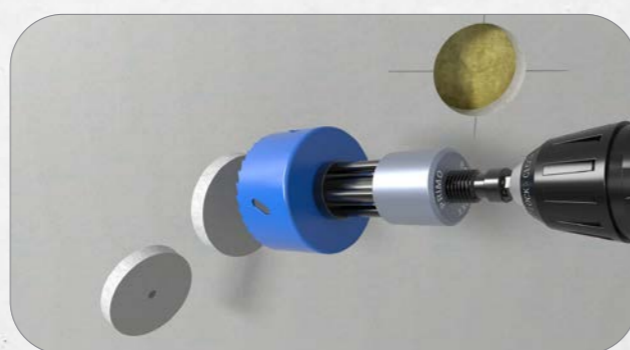
QNECT

Cavity Wall Boxes installed in a flash

Scan or click
for further
information



1. Mark the first box and drill it out from the front using the PRIMO Bohr-Fixx (P779) and a 74 mm hole saw (P797-74).



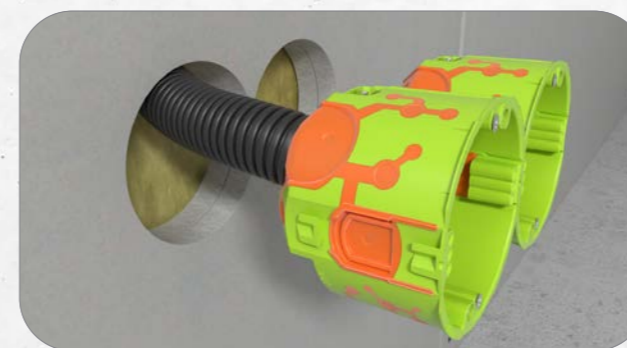
2. Easy removal of drill cores through automatic ejection of the drill core with Bohr-Fixx (P779).



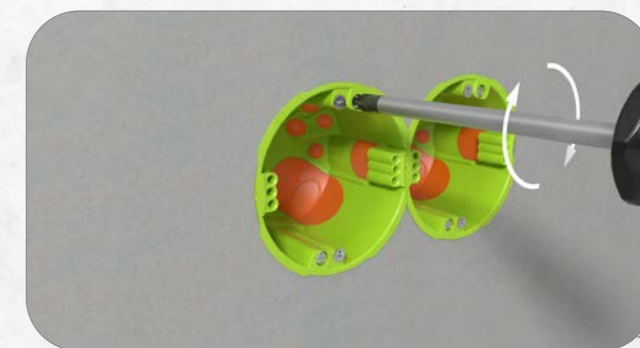
3. For multiple combinations, insert the Drilling Template (P102-74) into the first hole. Align using the integrated spirit level and tighten the lever. Drill more holes with the standardized combination spacing of 71 mm by moving the Drilling Template.



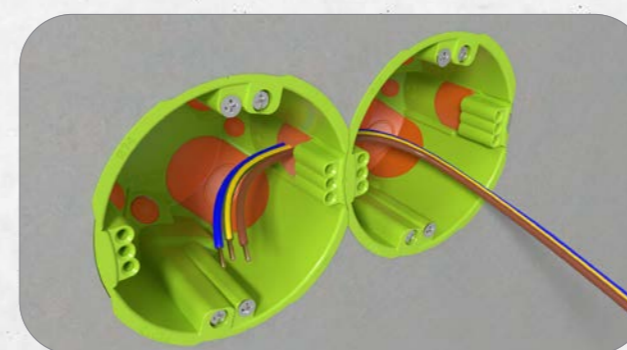
4. Stable connection thanks to SCS connection technology.



5. Tool-free conduit insertion thanks to membrane technology including Cable-Popp.



6. Insert the box and screw them tight.



7. Easy and time-saving through-wiring thanks to large-area connection membrane.



8. Huge installation space enables easy wiring of the devices.



9. Attach devices and align them flexibly thanks to the eight screw domes.



10. Complete installation – done!

QNECT CAVITY WALL SOUNDPROOF BOX

Soundproofing meets speed

Halogen-free

Membrane technology with Cable-Plopp
+ Insert cables completely without tools

Airtight

Large-area connection membrane for easy through-wiring
+ Airtight through-wiring
+ No connecting pieces required

Three screw domes
+ Individual alignment of built-in appliances
+ More flexibility during installation

74 mm drill hole
+ More installation space
+ Possibility of a firm connection with a combination spacing of 71 mm

SCS connection technology
+ Firm connection
+ Easy airtight through-wiring
+ Quick assembly of multiple combinations

Sound Insulation up to 58 dB

Sound-absorbing material

Sound-optimized membrane

IP 30 CE H Halogenfrei 850°C VDE

Designation	Article no.	PU	OC	PL	Price unit	Price in €
Qnect Cavity Wall Soundproof Box 49 mm	P200-02	25	200	4,000	100 pcs	920.63
Qnect Cavity Wall Soundproof Box 62 mm	P201-02	25	200	4,000	100 pcs	1,107.42

Accessories for the Qnect Cavity Wall Soundproof Box	Article no.	PU	OC	PL	Price unit	Price in €
Drilling Template for the Cavity Wall Soundproof Box 74 mm	P102-74	1	-	-	1 pcs	71.75
Carbide Diamond Hole Saw 74 mm	P797HD-74	1	-	-	1 pcs	45.50
Hole Saw 74 mm for Bohr-Fixx	P797-74	1	-	-	1 pcs	25.96
Edge Countersink 74 mm	P779-03	1	-	-	1 pcs	13.35
Bohr-Fixx Set 74 mm	P794-74	1	-	-	1 pcs	150.85
Bohr-Fixx and Drilling Template Set 74 mm	P857-74	1	-	-	1 pcs	409.47

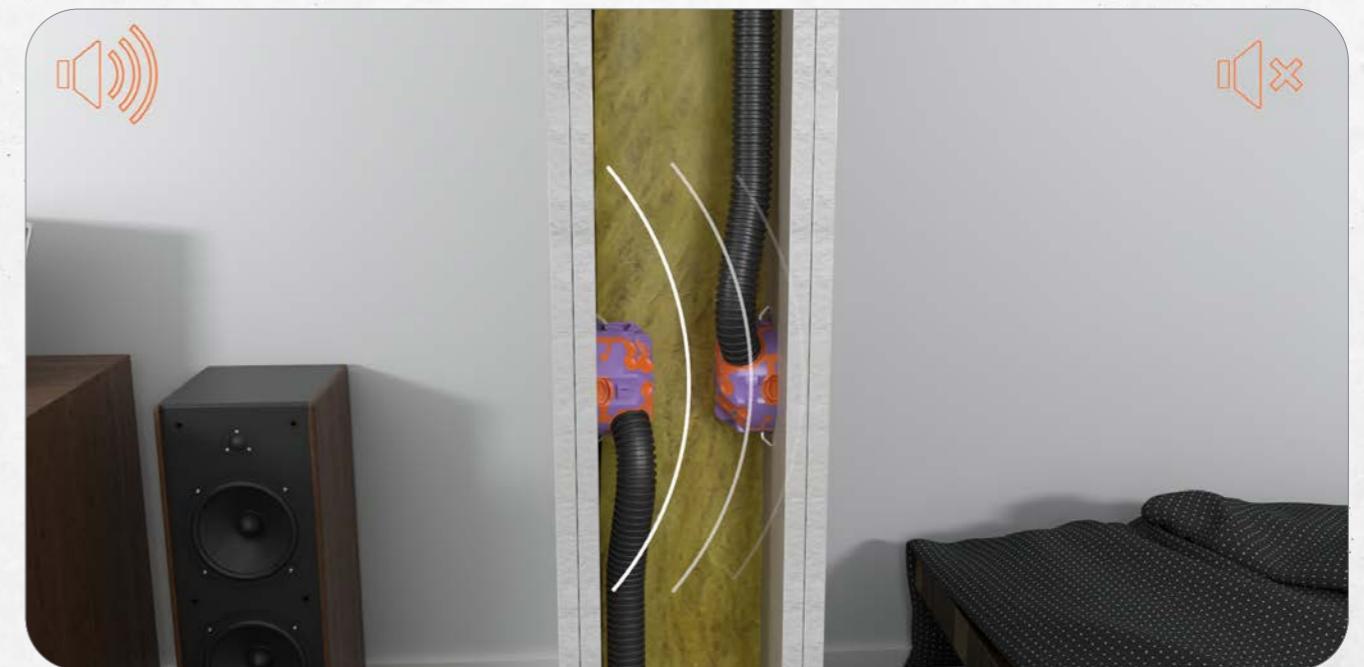
Dimensions	P200-02	P201-02
Depth	49 mm	62 mm
Diameter	74 mm	74 mm
Drill hole size	74 mm	74 mm
Membrane cable entries	6 entires (2x 3x1,5² 2x 3x2,5²/5x1,5² 2x 5x2,5²/7x1,5²)	10 entires (3x 3x1,5² 3x 3x2,5²/5x1,5² 4x 5x2,5²/7x1,5²)
Conduit entries aus Membran	2x to M25	2x to M25
Suitable for panel thickness	0 - 37 mm	0 - 37 mm

How to use

Scan or click for further information



QNECT Sound Insulation, halogen-free, airtight



Sound-absorbing material and the sound-optimized membrane provide sound insulation of up to 58 dB. This applies regardless of whether the boxes are single-sided, offset, or facing each other.

UNIQ CAVITY WALL DEVICE V-BOX

The unique cavity wall box

Installation from the rear

- + Faster installation
- + Easy installation of cables and conduits

SCS connection technology

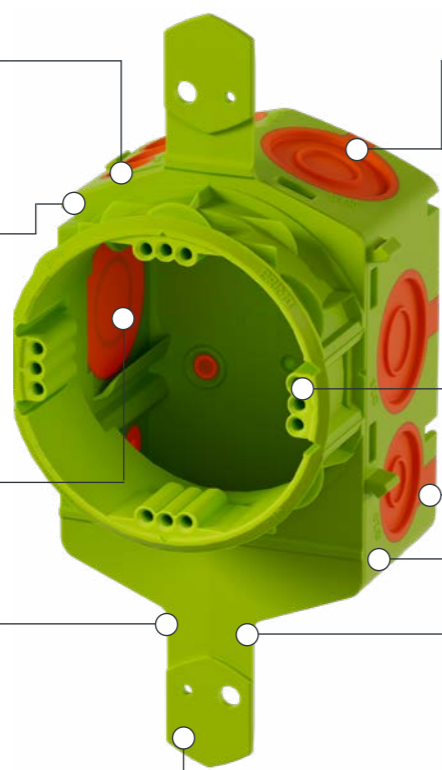
- + Firm connection
- + Easy airtight through-wiring
- + Quick assembly of multiple combinations

Large conduit entry M32

- + Insertion of pre-assembled cables

Various mounting options

- + Fixing slats ensure a firm hold in the wall
- + Optional additional fastening with nails, tackers, or screws



Membrane technology with conduit grip

- + Tool-free combination entries for cables and conduits M15 – M32
- + Reliable strain relief

Three screw domes

- + Individual alignment of built-in appliances
- + More flexibility during installation

Airtight

Halogen-free

Use as an electronics box

- + Sufficient installation space for the specified bending radius

Suitable for wall thicknesses from 25 mm



Designation	Article no.	PU	OC	PL	Price unit	Price in €
UniQ Cavity Wall Device V-Box	P270-01	25	25	1,350	100 pcs	358.33

Accessories for the UniQ Cavity Wall Device V-Box	Article no.	PU	OC	PL	Price unit	Price in €
Drilling Template for the UniQ Cavity Wall Device V-Box 74 mm	P102-74	1	-	-	1 pcs	71.75
Carbide Diamond Hole Saw 74 mm	P797HD-74	1	-	-	1 pcs	45.50
Hole Saw 74 mm for Bohr-Fixx	P797-74	1	-	-	1 pcs	25.96
Edge Countersink 74 mm	P779-03	1	-	-	1 pcs	13.35
Bohr-Fixx Set 74 mm	P794-74	1	-	-	1 pcs	150.85
Bohr-Fixx and Drilling Template Set 74 mm	P857-74	1	-	-	1 pcs	409.47

Dimensions	
Depth	73 mm
Diameter	74 mm
Drill hole size	74 mm
Membrane cable entries	15 entires (5x 3x1,5² 5x 3x2,5²/5x1,5² 5x 5x2,5²/7x1,5²)
Conduit entries aus Membran	1x to M20, 3x to M25, 1x to M32
Suitable for panel thickness	from 25 mm

How to use

Scan or click for further information

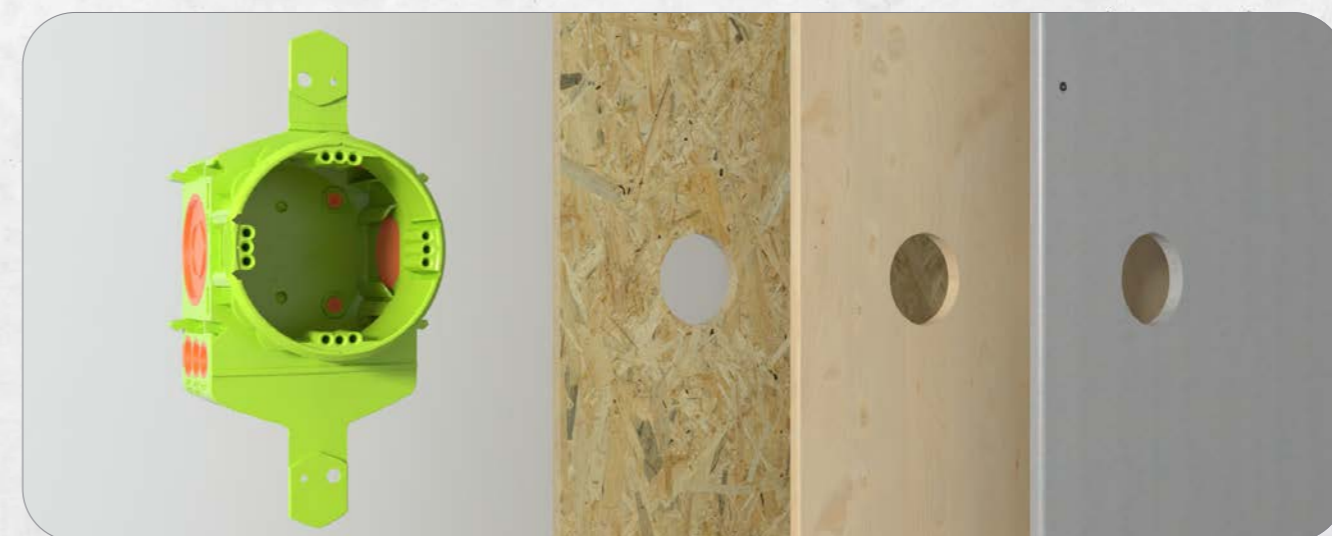


UNIQ

It's faster from the back.



The UniQ Cavity Wall Device V-Box (P270-01) is inserted through the hole from behind. This leaves the wall open, allowing cables and conduits to be easily inserted.



Suitable for OSB boards, wood panels and plasterboard with a wall thickness of 25 mm or more.

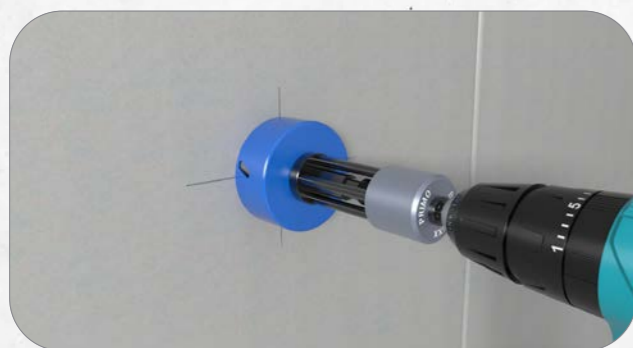
Installation instructions overleaf →

Installation instructions

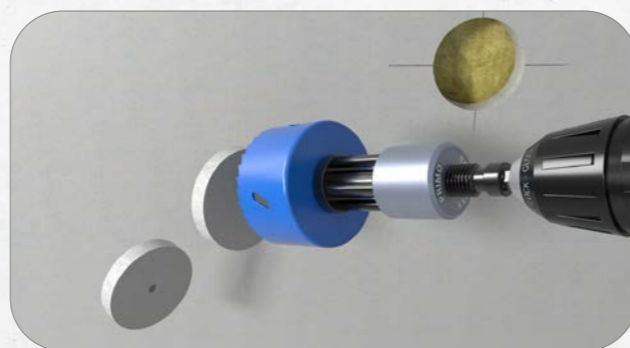
UNIQU

It's faster from the back

Scan or click for further information



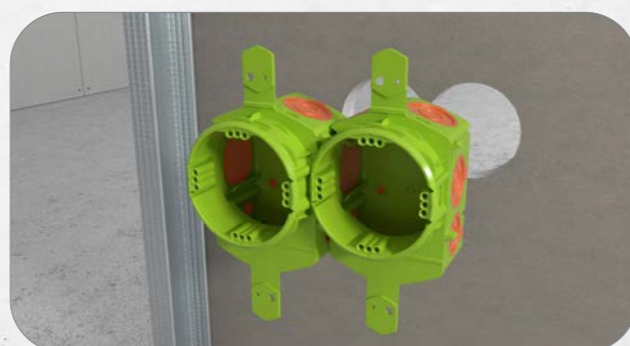
1. Mark the first box and drill it out from the front using the PRIMO Bohr-Fixx (P779) and a 74 mm hole saw (P797-74).



2. Easy removal of drill cores through automatic ejection of the drill core with Bohr-Fixx (P779).



3. For multiple combinations, insert the Drilling Template (P102-74) into the first hole. Align using the integrated spirit level and tighten the lever. Drill more holes with the standardized combination spacing of 71 mm by moving the Drilling Template.



4. Stable connection of the boxes thanks to SCS connection technology.



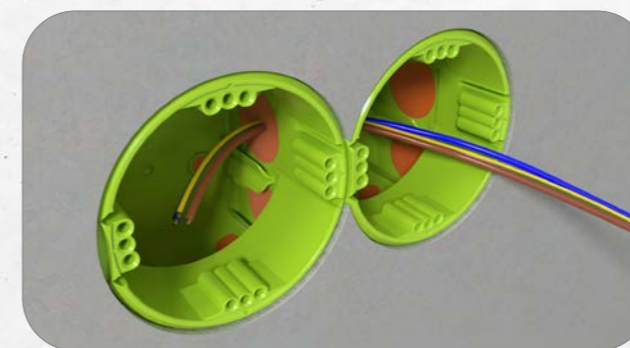
5. Insert cables and conduits with the Cable-Plopp completely tool-free. Reliable strain relief for corrugated conduits is provided by the conduit grip.



6. Quick assembly through reverse installation.



7. Precise positioning thanks to integrated markings on the box.



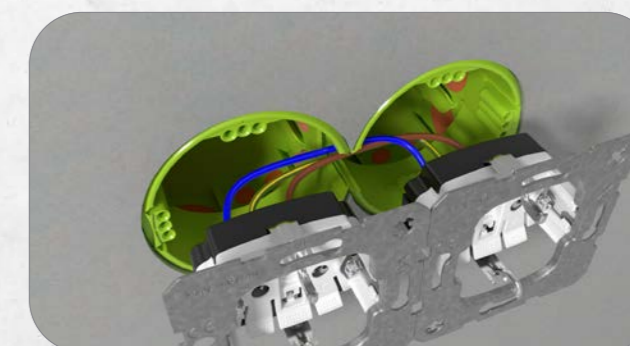
8. Easy and time-saving through-wiring thanks to large-area connection membrane.



9. If necessary, the SCS connecting bar can be broken out.



10. Suitable for all drywall materials with a wall thickness of 24 mm or more.



11. Simple installation of pre-wired devices thanks to SCS connection technology.



12. Flexible alignment of the built-in appliances thanks to 4x3 screw domes.



13. Completed installation.

BUILDING SITE



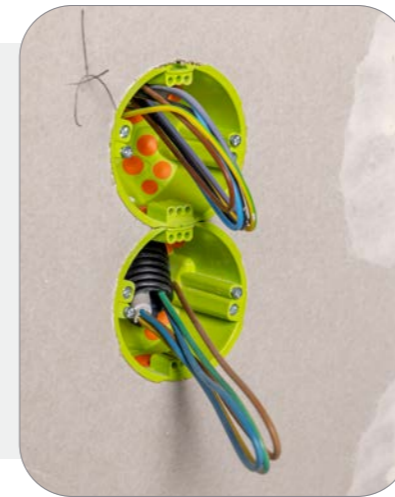
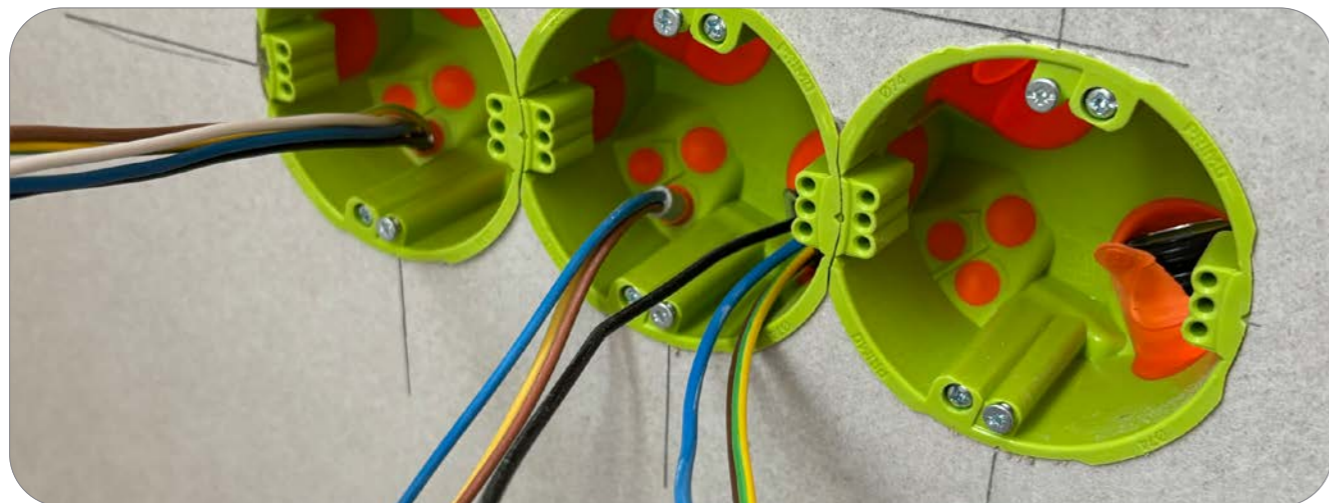
CUSTOMER EXPERIENCES

from the building site

ELEKTROTECHNIK TASCHEN GMBH

Tyler Bensik, Trainee

“The larger diameter not only makes it easier to get the cables out of the wall, but the boxes can also be firmly connected to one another. This allows me to wire them through directly.”



ELEKTRO BÄCKER

Jens Bäcker, Managing Director

“I’m totally fascinated by how easy the boxes are to install. The connection is really solid and so strong that the boxes won’t tilt.”



CABLE HOLDER

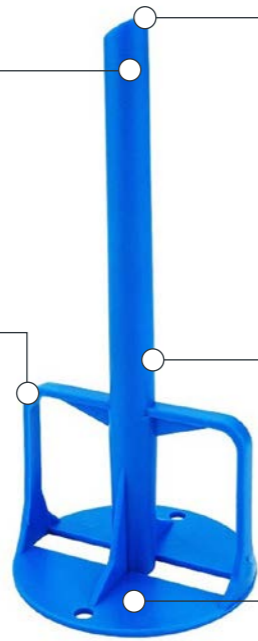
The marking professional

Advantages for all trades

- + Electrician: no searching
- + Technical planner: no cost distribution
- + Drywaller: no filling work
- + Building owner: quality (no scratched car)

Time and cost savings

- + No searching for boxes and cables
→ No expensive search drilling
- + Just a single measurement



Centering mandrel

- + Easy puncturing of insulation and second drywall
→ Placement of the box is clearly visible

Unplanned sockets are easy to find

Adhesive surface already integrated

BUILDING SITE EXAMPLES



Designation	Article no.	PU	OC	PL	Price unit	Price in €
Cable Holder incl. Adhesive Disc	P001	50	50	4,500	100 pcs	180.94
Adhesive Disc	P005	25	300	-	100 pcs	47.79

Accessories for the Cable Holder	Article no.	PU	OC	PL	Price unit	Price in €
Drilling Template for cavity wall box 68 mm	P102	1	-	-	1 pcs	67.25

Dimensions			
Fastening base plate diameter	60 mm	Mandrel external diameter	10 mm
Fixing hole internal diameter	6 mm	Mandrel length	135 mm
Adhesive Disc diameter	60 mm	Holding bracket height	45 mm

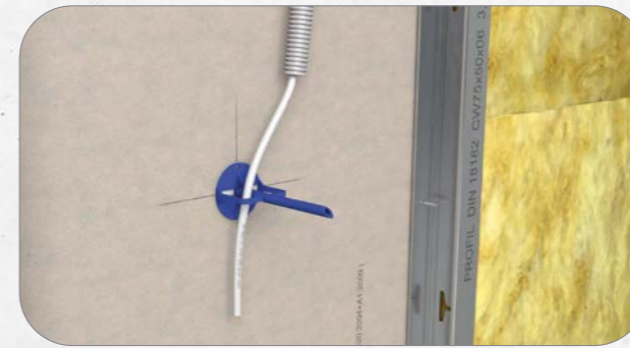
Installation instructions

Scan or click for further information

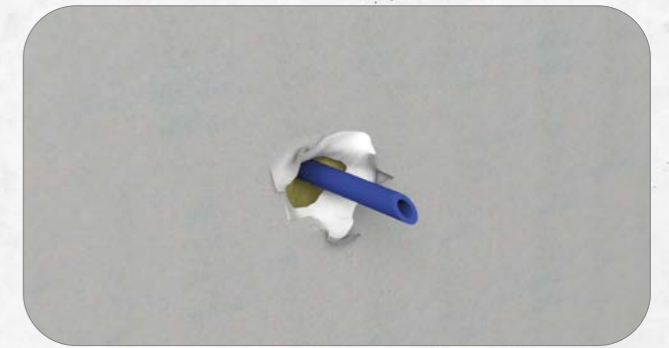


CABLE HOLDER

Been looking for cables? Wall destroyed? Not with our marking pro!



1. Adhere the Adhesive Disc (P005) to the Cable Holder (P001) and peel off the protective film. Fasten the Cable Holder to the drywall and feed cables or conduits through the brackets.



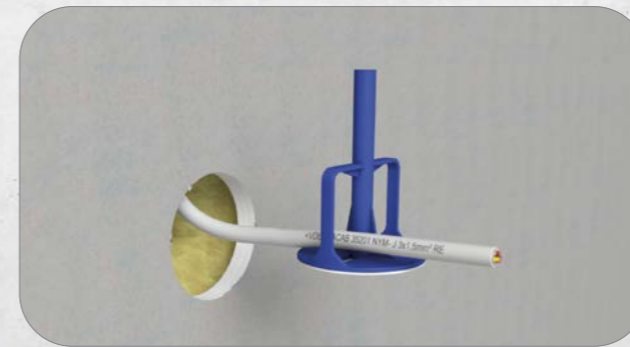
2. Push an angled mandrel through the second plasterboard or tap in a hole with a hammer beforehand.



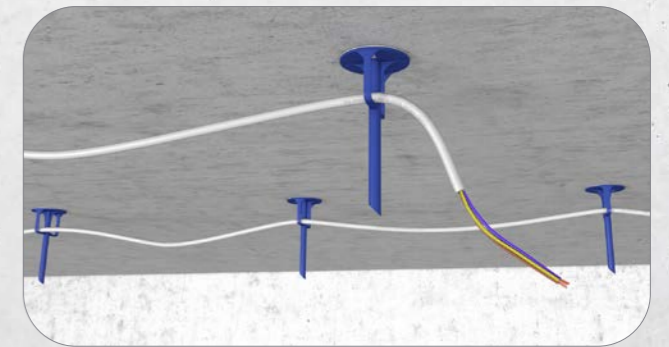
3. Pinch off the Cable Holder (P001) flush with the wall.



4. Place the box mill in the centering hole and mill out the hole.



5. Pull the Cable Holder (P001) with fixed cables or conduits out of the opening. Mount the cavity wall box and install the built-in device or socket.



Simple alternative for ceiling mounting for cable routing: adhere - done!

MULTI BOX

The allrounder for old building renovation, flush-mounting and plasterboard

Advantage for all trades

- + Electrician: no searching
- + Technical planner: no cost distribution
- + Drywaller: no filling work
- + Building owner: quality (no scratched car)

Plaster equalisation in old buildings

Flush with plaster as per VDE



For old building renovation, flush-mounting, drywall and cavity walls

Time and cost savings

- + No searching for boxes and cables → No expensive search drilling
- + Just a single measurement

Fast installation

ACCESSORIES



Signal Pin



Drill Cover



Designation	Article no.	PU	OC	PL	Price unit	Price in €
Multi Box	P002	25	100	2,400	100 pcs	131.41
Drill Cover	P003	25	500	12,000	100 pcs	131.41
Signal Pin	P004	25	5.000	-	100 pcs	22.05
Adhesive Disc	P005	25	300	-	100 pcs	47.79

Dimensions			
Installation opening	60 mm	Drill Cover diameter	72 mm
External diameter of lower part	69 mm	Drill Cover edge depth	6 mm
External diameter of upper part with Plaster Cover	66 mm	Mandrel internal diameter	6 mm
Depth (adjustable)	58 mm – 75 mm	Drill cover mandrel length	30 mm
Breakout openings for cables and conduits	20 mm/25 mm	Combination entries	6x M20 – M25

Installation instructions

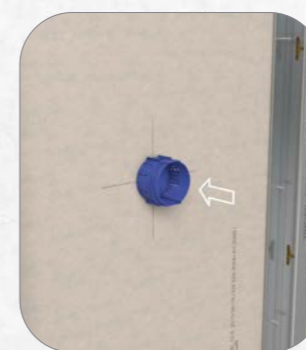
Scan or click for further information



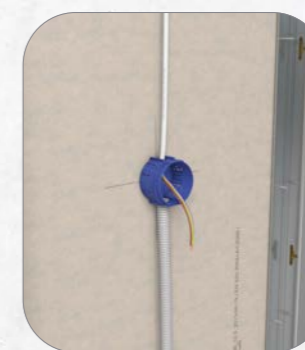
CAVITY WALL MULTI BOX



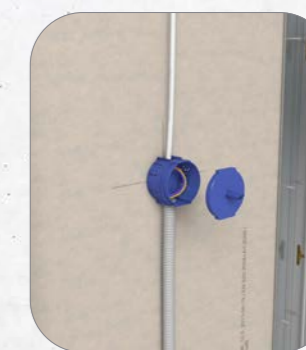
1. Stick the Adhesive Disc (P005) to the the bottom of the Multi Box (P002) and remove the protective film.



2. Push the box on the desired spot.



3. Insert cables and conduits.



4. Put on the Drill Cover (P003).



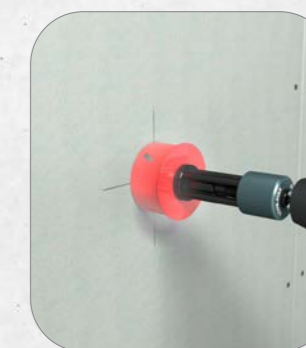
5. Attach insulation wool.



6. Option 1: Attach plasterboard and push through mandrel.



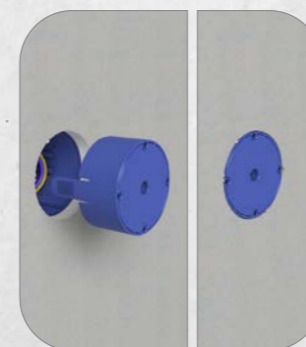
7. Option 2: Press on the plasterboard and use a hammer to knock a hole at the marked point. Then attach the plasterboard so that the spike pokes through the hole.



8. Drill out hole. The mandrel serves as a centering hole.



9. Remove the Drill Cover (P003).



10. Put on the standard cover and push it in flush with the plasterboard.

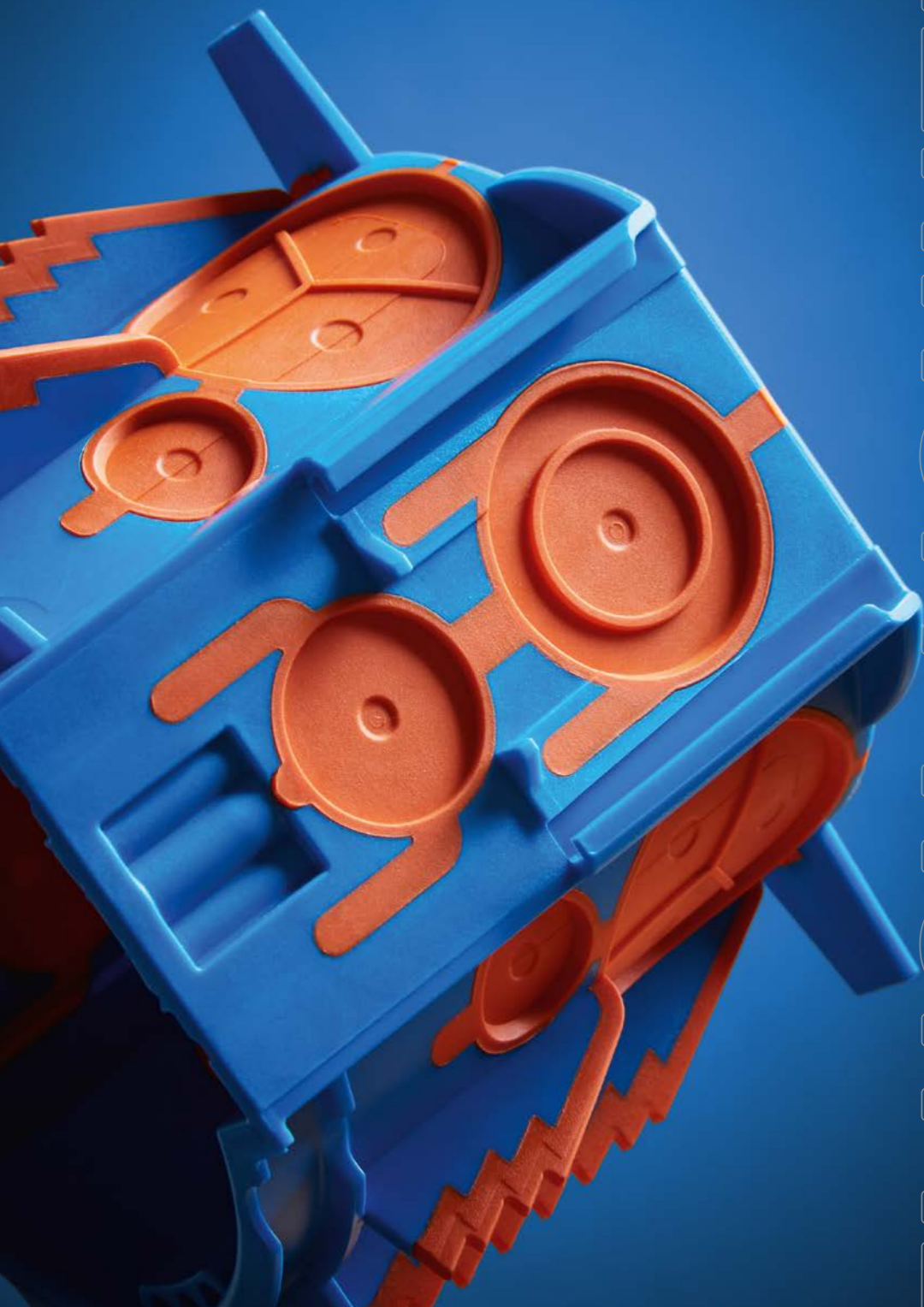


11. Break out the cover with a hammer.



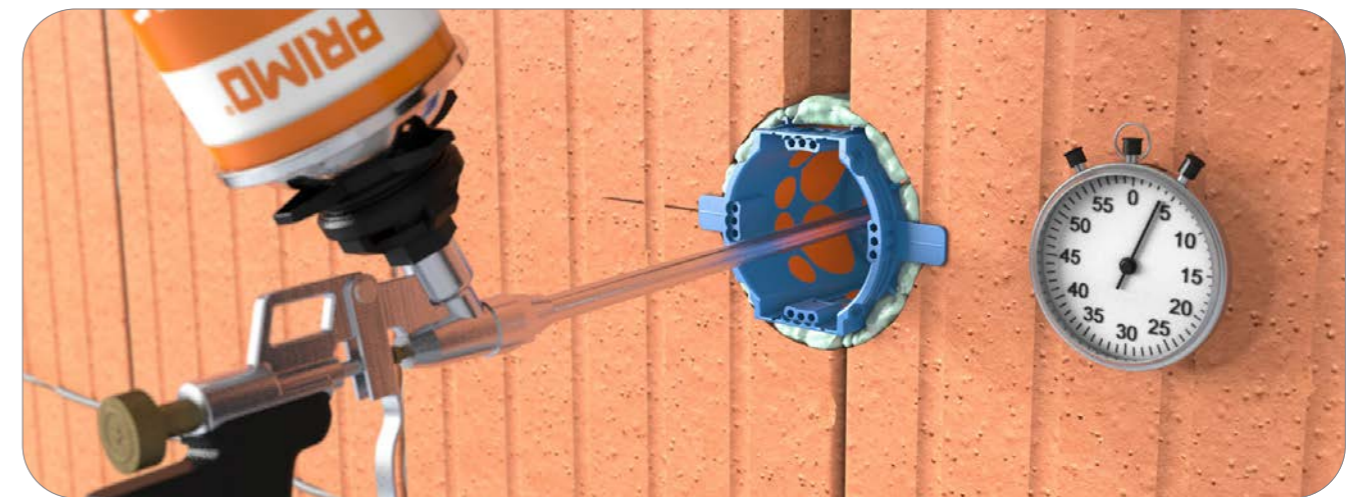
12. Complete installation.

02

FLUSH-MOUNTING
INSTALLATION

THE FASTEST FLUSH-MOUNTING SYSTEM IN THE WORLD

The PRIMO Thermo Box



FAST INSTALLATION

True to our motto: "Plastering was yesterday!" Thanks to the unique Quick Installation System (QIS), PRIMO offers you installation time savings of up to 70%.

SOUND PROTECTION

The innovative sound protection solutions from PRIMO meet the structural requirements for sound protection walls with built-in electrical installations.

AIRTIGHT

The specially developed Thermo Foam spreads out completely from behind around the Thermo Box and envelops it. This automatically seals all voids and ensures an airtight installation. An energy-efficient installation is thus guaranteed.

THERMAL BRIDGE-FREE

With the introduction of the new EnEV (German Energy Saving Regulations), the requirements for the saving of primary energy in new buildings have been considerably tightened. These problems are solved practically and in a time-saving way by foaming the box.

THERMO BOX

The original

4-in-1 areas of application:

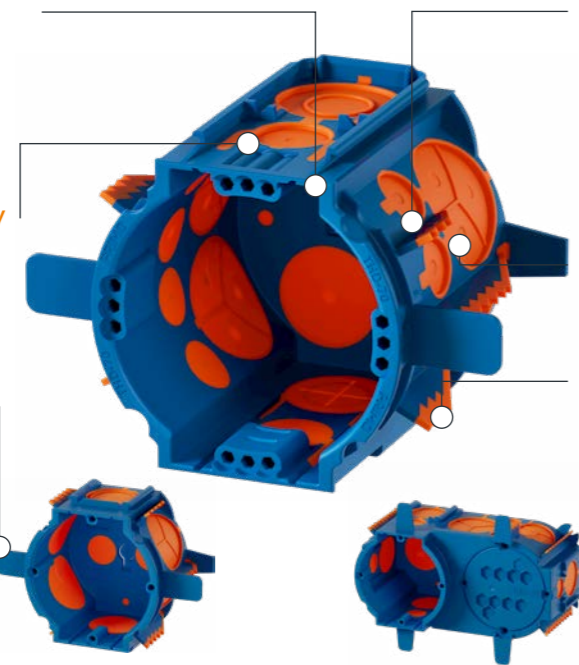
- + Fast installation
- + Sound protection
- + Thermal bridge-free
- + Airtight

SCS connection technology

- + Permanent connection
- + Easy through-wiring
- + Simple installation of pre-wired devices

Plaster stop

- + Guaranteed 10 mm plaster thickness according to DIN ISO VDE 18550
- + Easy to break off
- + Set flush with the masonry (also for old buildings)



Membrane technology

- + Combination entry for conduits up to M25 without tools
- + Insertion of (earth) cable is possible
- + 18 entries, including 6 combination entries

Innovative foaming technology

- + Fast installation by foaming

Membrane teeth

- + Compensate unevenness in the drill hole
- + Centre the Thermo Box



Designation	Article no.	PU	OC	PL	Price unit	Price in €
Thermo Box THD-70	P726	25	100	2,400	100 pcs	343.59
Thermo Box THD-45	P774	25	100	3,200	100 pcs	321.98
Thermo Box TED-70	P775	10	100	1,000	100 pcs	1,166.91

Accessories for Thermo Box	Article no.	PU	OC	PL	Price unit	Price in €
Leveling Ring 8 mm for Ø 60 mm	P680	25	300	27,000	100 pcs	149.09
Leveling Ring 12 mm for Ø 60 mm	P681	25	150	13,500	100 pcs	154.55
Leveling Ring 24 mm for Ø 60 mm	P682	25	100	9,000	100 pcs	161.82
Drill Cover for Ø 60 mm	P683	25	500	12,000	100 pcs	160.72
Universal Plaster Cover UP	P722	100	500	12,000	100 pcs	37.41
Thermo Foam 750 ml	P717	1	12	840	1 pcs	26.50
Thermo Foam Eco	P717-ECO	1	12	840	1 pcs	43.48
Drilling Template flush-mounting Ø 82 mm	P718	1	1	-	1 pcs	190.90
Drilling Template flush-mounting Ø 82 mm 5-part	P718-05	1	1	-	1 pcs	226.56
Pistol for PRIMO Thermo Foam	P719	1	1	-	1 pcs	45.74
Equipment Carrier GET-80	P773	25	150	4,800	100 pcs	156.65

Dimensions	THD-70	THD-45	TED-70
Depth	68 mm	46 mm	68 mm
Width with plaster stops	105 mm	105 mm	105 mm
Length	73 mm	73 mm	145 mm
Installation opening	60 mm	60 mm	60 mm or 2x 60 mm
Drill hole size	82 mm	82 mm	2x 82 mm, breakout web
Membran entries	8x M12 with Cable-Plopp; 2x M15 with Cable-Plopp; 1x M15/M20 with Cable-Plopp; 5x M15/M20/M25 with Cable-Plopp	1x entry up to M20; 5x entry up to M25	8x cable entries M12; 2x entry up to M20; 4x entry up to M25; 2x entry up to M32
Membran entries from the rear	2x M20 with Cable-Plopp	2x M12	2x M15; 1x M15/M20/M25

How to use

Scan or click for further information



THERMO BOX

Are you still plastering or are you already foaming?



Suitable for sand-lime brick, Ytong, brick, concrete, and all other masonry.

	THERMO FOAM	THERMO FOAM ECO
POROTON / BRICK	✓	✓
YTONG	✓	✓
SAND-LIME BRICK	✓	✓
SOLID WOOD	✓	✓
CONCRETE	✓	✓
PUMICE	✓	✓
EPS (STYROFOAM)	✓	✓
XPS (STYRODUR)	✓	✓
PU INSULATION BOARDS	✓	✓
WOOD FIBER INSULATION	✓	✓
WOOD CHIP INSULATION	✓	✓
FOAM GLASS	✗	✗
GLASS WOOL	✗	✗
ROCK WOOL	✗	✗



The Thermo Box system consists of four parts: The Thermo Box (THD-70, P726), the flat Thermo Box (THD-45, P774), the Thermo Electronics Box (TED-70, P775) and the Thermo Box THD-70 PLUS (P727). All parts can be combined with one another thanks to the SCS connection technology.

Installation instructions overleaf →

Installation instructions

THERMO BOX THD-70

Scan or click
for further
information



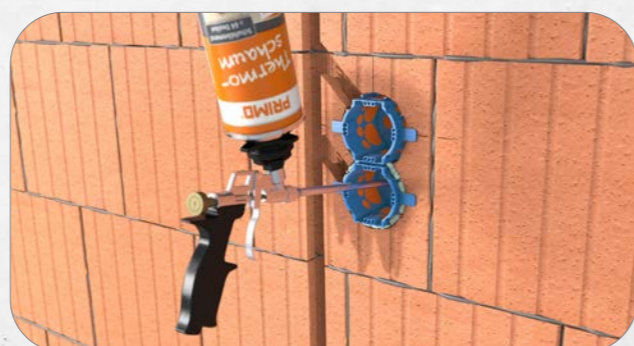
1. Mark the first box and drill with PRIMO High-Speed Drill (P936) and 82 mm core bit.



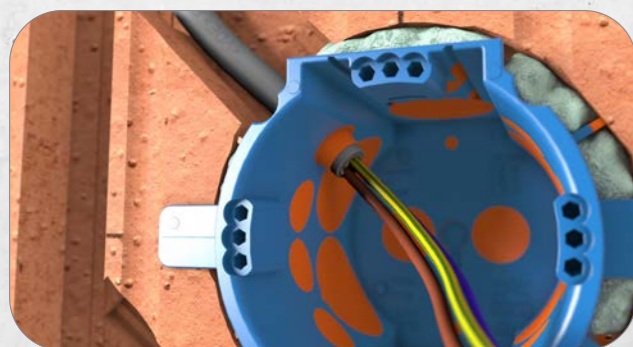
2. For multiple combinations, insert the Drilling Template (P718) in the first hole. Tighten the lever and align it using the integrated spirit level. Any number of further holes can be drilled at the standard spacing of 71 mm by moving the template.



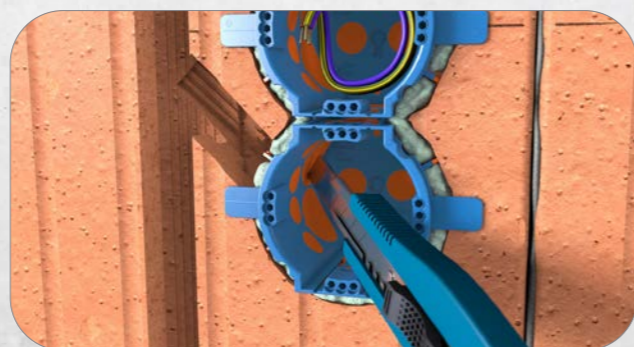
3. Insert the boxes up to the plaster stop. A standard-compliant and flush-mounted installation is thus ensured.



4. Using the Foam Pistol (P719), inject the foam (P717) through the opening in the rear of the box until the box is completely enclosed, airtight and thermal bridge-free. After 20-30 minutes, the foam is cut-resistant.



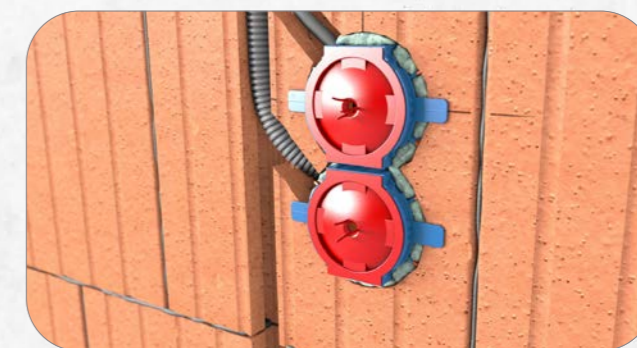
5. Pierce the Cable-Plopp with the cable and thus insert the cable entirely without tools.



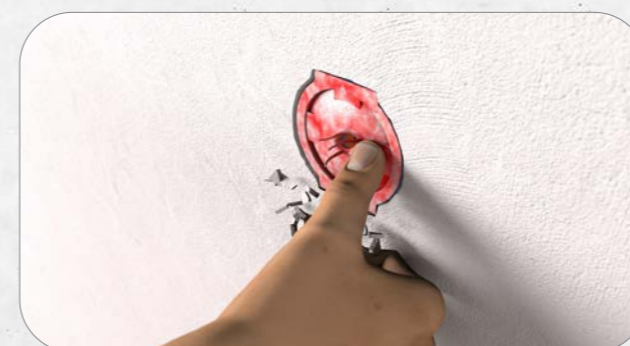
6. Alternatively, open the membrane with the cutter.



7. The membrane teeth fix the box firmly in the hole before foaming. Thermo Boxes can thus be preassembled with the conduits and then be foamed.



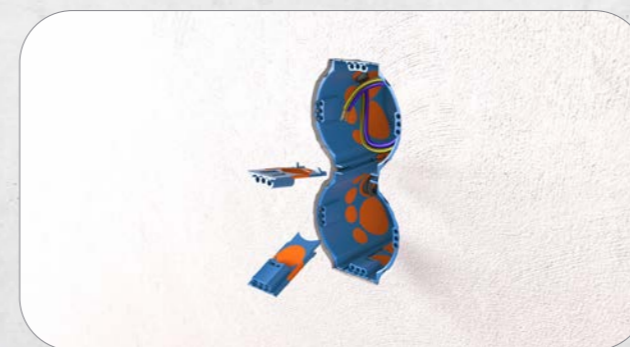
8. Attach the convex Plaster Cover (P722) to the opening of the box to protect the screw bosses and the inside of the box, and to reduce the plaster application.



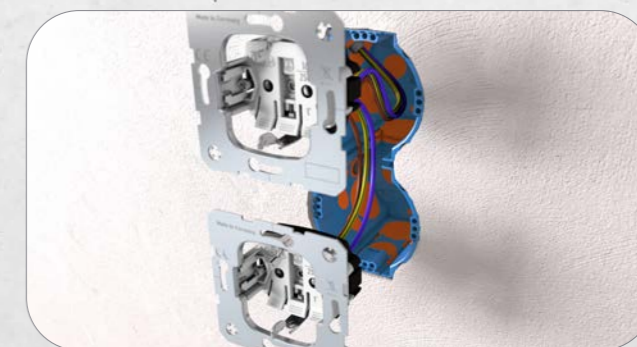
9. Signal Pins ensure quick location. Push the cover (P722) in with your finger or screwdriver. When it pops outwards, a clean contour is created without offsets in the plaster. Then remove the cover (P722).



10. Alternatively, expose the Plaster Cover with a 68 mm Hole Saw and remove it.



11. Break out the SCS connecting web if necessary.



12. Now simply wire the devices or install them pre-wired.

Installation instructions

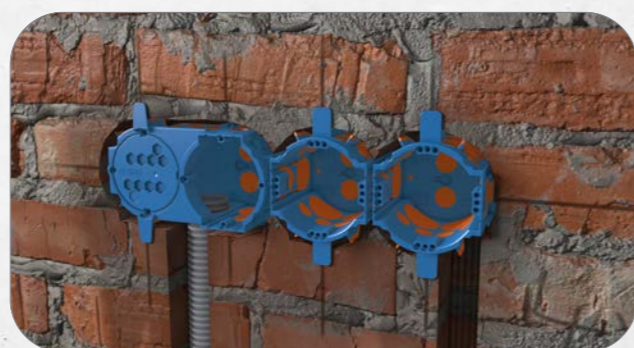
THERMO BOX

The right flush-mounting box for the renovation of every old building

Scan or click for further information



1. The membrane teeth fix the boxes securely in the hole. This enables the time-saving installation of boxes that have already been preassembled with conduits.



2. Insert the boxes up to the plaster stop. A standard-compliant and flush-mounted installation is thus ensured.



3. With a plastered wall, simply break off the plaster stop and insert the box fully.



4. Use the Foam Pistol (P719) to break out the predetermined breaking point in the rear of the box and inject the foam (P717) until the box is completely enclosed. After 30 minutes, the foam is cut-resistant.



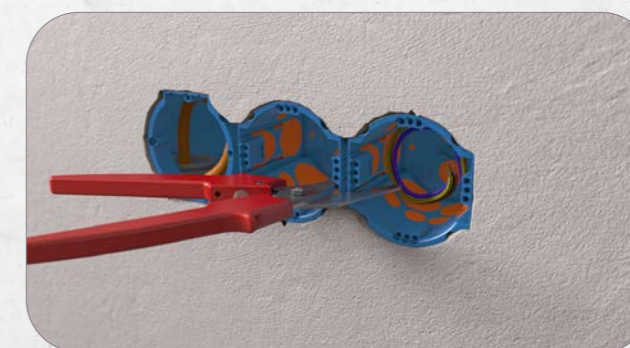
5. Pierce the Cable-Plopp with the cable and thus insert the cable entirely without tools.



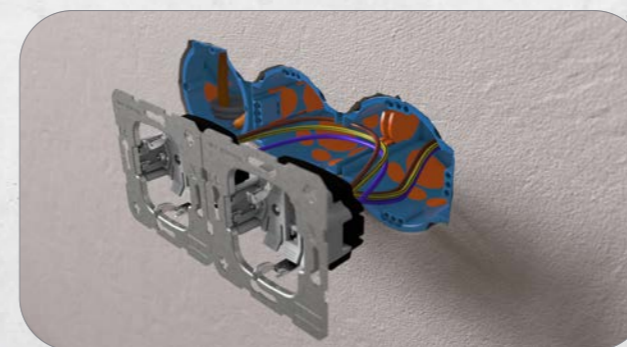
6. Signal Pins ensure quick location. Push the cover (P722) in with your finger or screwdriver. When it pops outwards, a clean contour is created without offsets in the plaster. Then remove the cover (P722).



7. Alternatively, expose the Plaster Cover with a 68 mm Hole Saw (P797) and remove it.



8. Break out the SCS connecting web if necessary.



9. Now simply wire the devices or install them pre-wired.



10. Complete the installation – done!

THERMO BOX PLUS

Even more installation space

4-in-1 areas of application:

- + Fast installation
- + Sound protection
- + Thermal bridge-free
- + Airtight

SCS connection technology

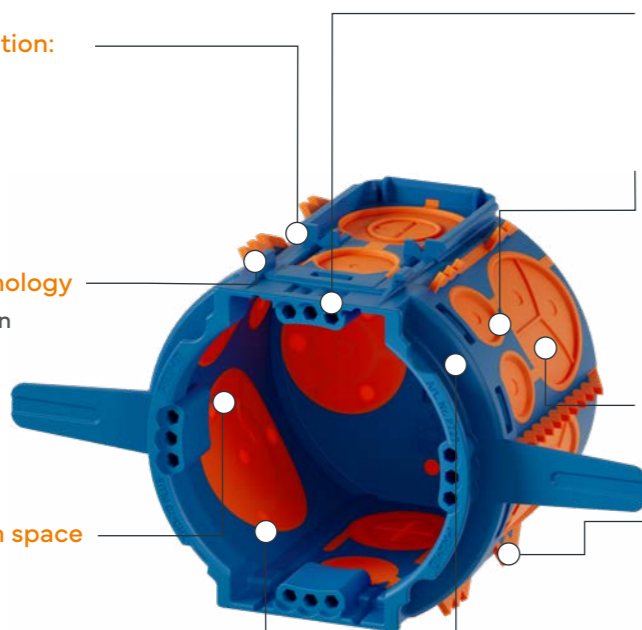
- + Permanent connection
- + Easy through-wiring
- + Simple installation of pre-wired devices

Even more installation space

- + Larger inner diameter
- + 20% more space

Large conduit entry

- + Combination entries for cables and conduits up to M32
- + Insertion of pre-assembled cables possible



Three screw domes

- + Individual alignment of built-in appliances
- + High flexibility during installation

Membrane technology

- + Combination entry for conduits up to M25 without tools
- + Insertion of (earth) cable is possible
- + 18 entries, including 6 combination entries

Innovative foaming technology

- + Fast installation by foaming

Membrane teeth

- + Compensate unevenness in the drill hole
- + Centre the Thermo Box

For all applications

- + Smart, opposing arrangement of M25 and M32 connectors



Designation	Article no.	PU	OC	PL	Price unit	Price in €
Thermo Box THD-70 PLUS	P727	25	100	2,400	100 pcs	396.36

Accessories for Thermo Box PLUS	Article no.	PU	OC	PL	Price unit	Price in €
Leveling Ring 8 mm for Ø 60 mm	P680	25	300	27,000	100 pcs	149.09
Leveling Ring 12 mm for Ø 60 mm	P681	25	150	13,500	100 pcs	154.55
Leveling Ring 24 mm for Ø 60 mm	P682	25	100	9,000	100 pcs	161.82
Drill Cover for Ø 60 mm	P683	25	500	12,000	100 pcs	160.72
Universal Plaster Cover	P722	100	500	12,000	100 pcs	37.41
Thermo Foam 750 ml	P717	1	12	840	1 pcs	26.50
Thermo Foam Eco	P717-ECO	1	12	840	1 pcs	43.48
Drilling Template flush-mounting Ø 82 mm	P718	1	1	-	1 pcs	190.90
Drilling Template flush-mounting Ø 82 mm 5-part	P718-05	1	1	-	1 pcs	226.56
Pistol for PRIMO Thermo Foam	P719	1	1	-	1 pcs	45.74
Equipment Carrier GET-80	P773	25	150	4,800	100 pcs	156.65

Dimensions			
Depth	70 mm	Internal depth	68 mm
Width with plaster stops	135 mm	Membrane cable entries	4 x M11, 2 M15 with Cable-Plopp
Length	73 mm	Conduit entries	2 x M20, 2 x M25, 2 x M32 with Cable-Plopp
Installation opening	60 mm	Membran entries from the rear	2 x M25 with Cable-Plopp

Installation instructions

Scan or click for further information

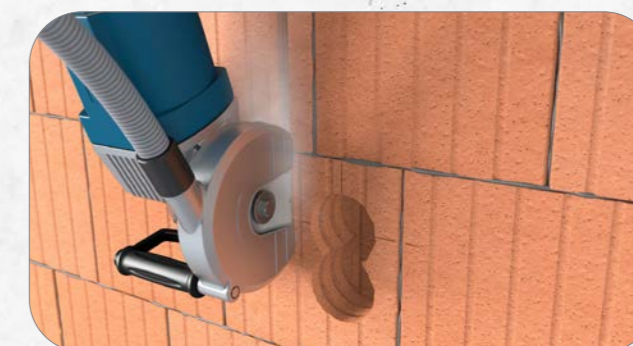


THERMO BOX PLUS

With large conduit entries airtight and thermal bridge-free installation including sound insulation



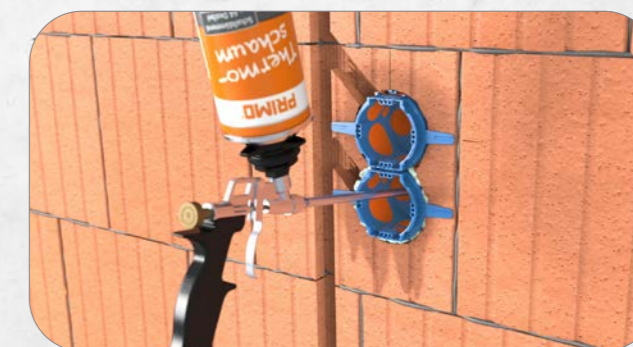
1. Mark the first box and drill out the hole using an 82 mm core bit. For multiple combinations, use the flush-mounting Drilling Template (P718).



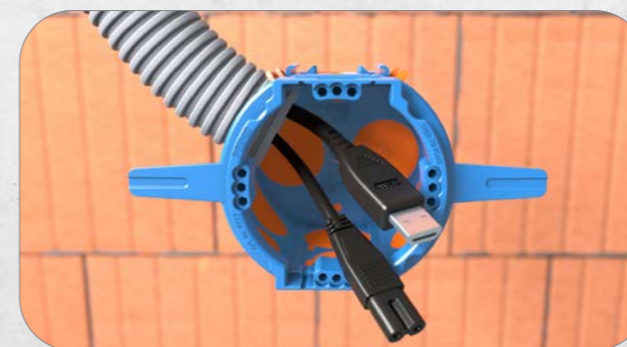
2. Mill a slot down to the box opening. Then, lightly moisten it so the Thermo Foam expands more quickly.



3. Securely connect the Thermo Boxes with a 71 mm combination spacing and insert them into the drilled hole. A flush finish is guaranteed thanks to the plaster stop.



4. Insert the box, spray in the Foam (P717) = thermal bridge-free and airtight installation in seconds.



5. Simply push cables through the Cable Plopp or open the membrane with a cutter knife and insert the conduit. Pre-assembled cables can be installed via the M32 large-diameter conduit entry.



6. The large installation space and M32 large-diameter conduit entry allow for flush-mounting installation of pre-assembled cables.

BUILDING SITE



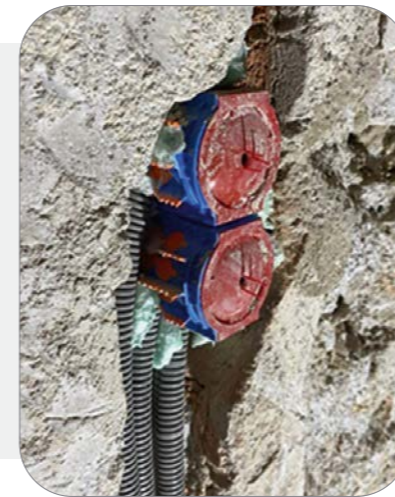
CUSTOMER EXPERIENCES

from the building site

ELEKTRO MAUEL

Tobias Wiesner, Installer

Using the Thermo Boxes, I installed an entire house completely by myself within six hours. My colleague took two days using conventional boxes.



ELEKTRO-ENGELHARD GMBH

Sven Ammenhäuser, Managing Director

In old building projects, the condition of the walls varies a great deal. Whether adobe, brick or other types: We can really use the Thermo Box in any type of masonry. That makes the work much easier for the fitter. It's faster and the work is much more pleasant. Nobody likes plastering.

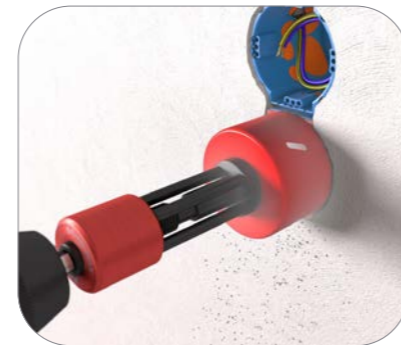
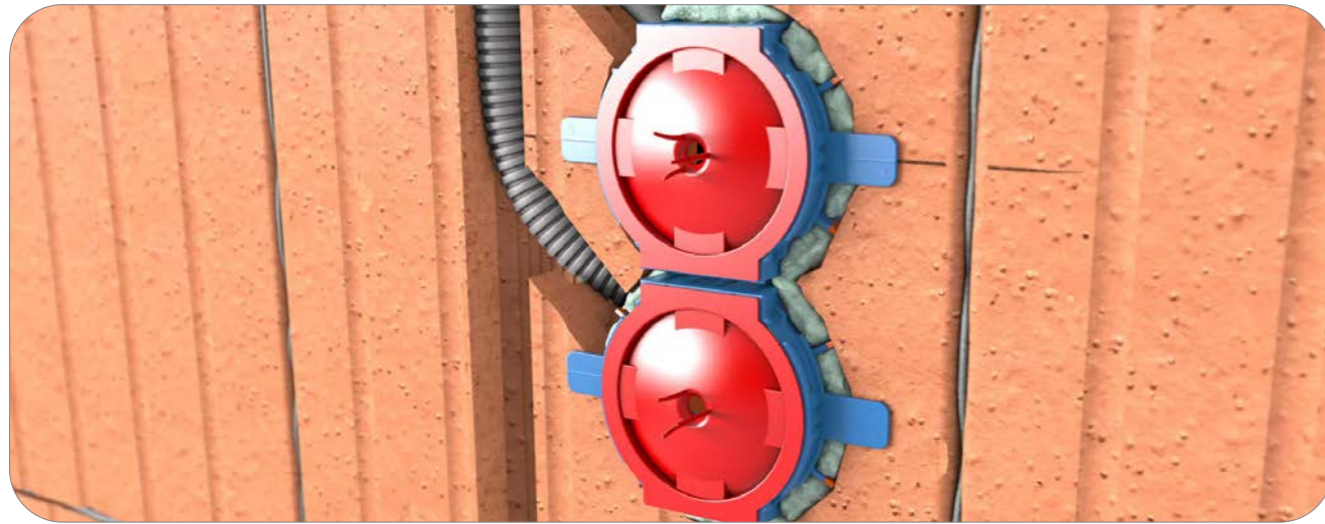


Scan or click for further information



UNIVERSAL PLASTER COVER

No more plaster in the switch box



UNIVERSAL SIZE

The standardized shape makes the Plaster Cover (P722) a reusable helper that fits all standard flush-mounting boxes. The lateral tabs also protect the screw bosses.

SIMPLY POP

The cover can be pressed inwards by hand after plastering. It pops out again, is free from plaster and there are clean contours without plaster breaking off.

CENTERING HOLE

Place the drill with a 68 mm Hole Saw (P797) in the centering hole and mill out the box with clean contours.

Designation	Article no.	PU	OC	PL	Price unit	Price in €
Universal Plaster Cover UP	P722	100	500	12,000	100 pcs	37.41

Universal Plaster Cover dimensions						
External diameter		65.5 mm	Overall height			24 mm
Internal diameter		60 mm	Height up to cover curvature			8.5 mm

Scan or click for further information



DRILL COVER

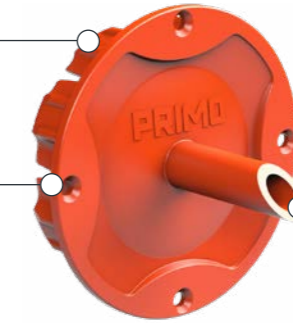
No more exploratory drilling

Universally applicable

- + Drill Cover can be attached to all flush-mounting and concrete boxes with a Ø 60 mm outlet

Time and cost savings

- + Suitable for subsequently installed drywall panels
- + No exploratory drilling required
- + Only one measurement necessary



Centering mandrel

- + Easy piercing of the panels
- + Clearly visible placement of the box
- + Centering hole for drilling out the box



Designation	Article no.	PU	OC	PL	Price unit	Price in €
Drill Cover for Ø 60 mm	P683	25	500	12,000	100 pcs	160.72

Dimensions Drill Cover				
Total diameter		67 mm	Länge Dorn	35 mm
Overall height		51.5 mm	Geeignet für Diameter Dose	60 mm

LEVELING RINGS

Compatible with all wall thicknesses

Universally applicable

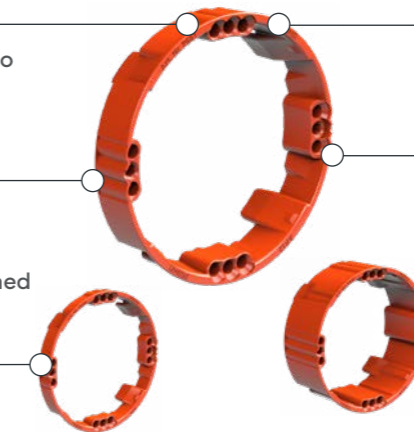
- + Leveling Rings can be attached to all flush-mounting and concrete boxes with Ø 60 mm outlet

Combinable

- + For compensating boxes that are too low
- + All Leveling Rings can be combined for any height

Three sizes

- + 8 mm, 12 mm und 24 mm



Scan or click for further information



Through-hole

- + Stable connection of the devices directly to the box

Three screw domes

- + Individual alignment of built-in appliances
- + High flexibility during installation



Designation	Article no.	PU	OC	PL	Price unit	Price in €
Leveling Ring 8 mm for Ø 60 mm	P680	25	300	27,000	100 pcs	149.09
Leveling Ring 12 mm for Ø 60 mm	P681	25	150	13,500	100 pcs	154.55
Leveling Ring 24 mm for Ø 60 mm	P682	25	100	9,000	100 pcs	161.82

Dimensions Leveling Rings			
	P680	P681	P682
External diameter	67 mm	67 mm	67 mm
Internal diameter	60 mm	60 mm	60 mm
Compensation height	8 mm	12 mm	24 mm
Combinable	Yes	Yes	Yes
Screw spacing	60 mm	60 mm	60 mm

Scan or click for further information



EXTERNAL THERMAL INSULATION COMPOSITE SYSTEM

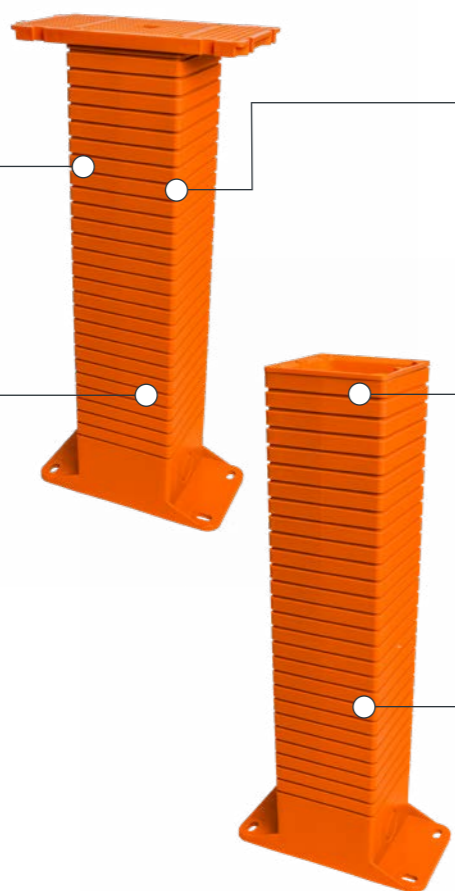
Secure attachment to exterior walls

Optimal integration into thermal insulation systems

- + Practical rectangular design
- + Suitable for insulation thicknesses of 50 – 320 mm

High load-bearing capacity and secure mounting

- + Supports up to 8 kg per mounting bracket when screwed directly to the load-bearing wall
- + Suitable for mounting outdoor devices such as lights or sensors on insulated facades



High flexibility

- + Combination options for higher loads and double sockets
- + Material savings thanks to a universal system for all facade applications

Sustainable and environmentally friendly material solution

- + Halogen-free
- + Made from recycled polypropylene (PP) and supplied in sustainable packaging

Time-saving assembly

- + Quick and easy assembly without special tools
- + Clever design allows for precise attachment of the base plate to exterior walls (e.g. brick)



Designation	Article no.	PU	OC	PL	Price unit	Price in €
ETICS-Device Box	P400	1	12	288	1 pcs	23.50
ETICS-Device Carrier 160 x 140 mm	P401	1	12	288	1 pcs	24.83

Dimensions	P400	P401
Length	140 mm	140 mm
Width	70 mm	160 mm
Depth	320 mm	320 mm
Minimum insulation thickness	50 mm	50 mm
Maximum insulation thickness	320 mm	320 mm
Maximum mounting area	-	160 x 140 mm

EQUIPMENT CARRIER

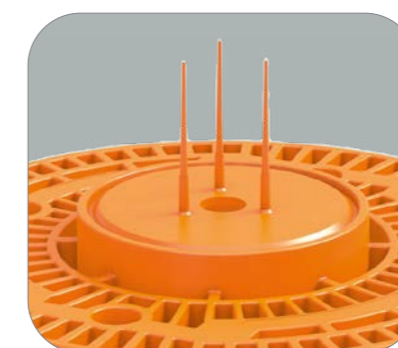
The plastered-in dowel – no more drilling

Scan or click for further information



FASTENING WITH SCREWS

Screws are fixed directly and drilling is eliminated, therefore there is no cable damage or consequential costs. Optimum size of the screws is 4 x 35, alternatively also ≤ 3 x 25.



SIGNAL PIN

Easy to find even after plastering thanks to signal pins. After plastering, the 35 mm predetermined breaking point is opened using the centering hole and a 35 mm Hole Saw or a hammer.



MOUNTING SURFACE

84 mm mounting surface for installation of lamps or devices without dowels. Usable for all Thermo Boxes or M-Series products.



Designation	Article no.	PU	OC	PL	Price unit	Price in €
Equipment Carrier GET-80	P773	25	150	4,800	100 pcs	156.65

Dimensions GET-80			
Diameter	84 mm	Screw length depending on plaster application	max. 25 mm
Depth	30 mm	Integrated screw bosses	4
Luminaire outlet	35 mm		

Scan or click for further information



MULTI BOX

The allrounder for old building renovation, flush-mounting and plasterboard

Advantage for all trades

- + Electrician: no searching
- + Technical planner: no cost distribution
- + Drywaller: no filling work
- + Building owner: quality (no scratched car)

Plaster equalisation in old buildings

Flush with plaster as per VDE



For old building renovation, flush-mounting, drywall and cavity walls

Time and cost savings

- + No searching for boxes and cables → No expensive search drilling
- + Just a single measurement

Fast installation

Installation instructions



1. Set the lower part flush, insert cables or conduits. Carefully let the standard cover with interlocking teeth snap in. Allow the cover to protrude by about 2.5 – 3 cm.



2. The plasterer pushes the cover to the required height during plastering – guaranteed flush and VDE-tested! Remove the Signal Pins and mill out the box cover with the help of the centering hole.



Designation	Article no.	PU	OC	PL	Price unit	Price in €
Multi Box	P002	25	100	2,400	100 pcs	131.41
Drill Cover	P003	25	500	12,000	100 pcs	131.41
Signal Pin	P004	25	5,000	-	100 pcs	22.05
Adhesive Disc	P005	25	300	-	100 pcs	47.79

Dimensions	
Installation opening	60 mm
External diameter of lower part	69 mm
External diameter of upper part with Plaster Cover	66 mm
Depth (adjustable)	58 mm – 75 mm
Breakout openings for cables and conduits	20 mm/25 mm
Drill cover diameter	72 mm
Drill cover edge depth	6 mm
Mandrel internal diameter	6 mm
Drill cover mandrel length	30 mm
Combination entries	6x M20 – M25

PRIMO CLIP

Fastening of conduits and cables in seconds without tools

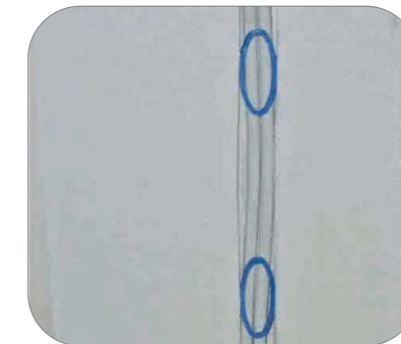
Advantages

- + Fastening of conduits and cables without tools
- + For conduits and cables
- + Usable in all types of masonry
- + For several conduits at the same time



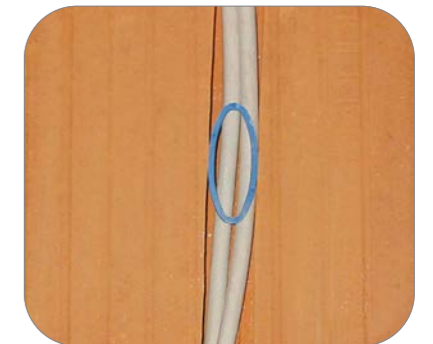
ESPECIALLY FOR NARROW SLOTS

Suitable for old buildings and particularly narrow slots. Simply mount longitudinally with narrow slots.



WIDE RANGE OF USES

Suitable for brick, old buildings, aerated concrete, limestone block, concrete and all other types of masonry. Also usable with wall slots up to 50 mm.



SEVERAL CABLES CAN BE FIXED

Several conduits or cables can be fixed with one clip (P076). Nailing plates or other constructions are thus made redundant.



Scan or click for further information



Designation	Article no.	PU	OC	PL	Price unit	Price in €
PRIMO Clip	P076	100	5,000	120,000	100 pcs	16.77

Dimensions	
Length	60 mm
Width	30 mm
Thickness	4 mm

BUILDING SITE



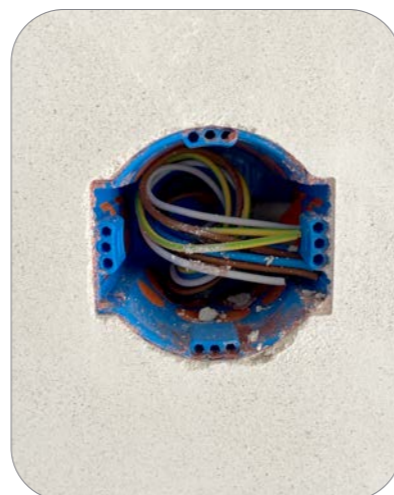
CUSTOMER EXPERIENCES

from the building site

AVHZ GMBH

Christoph Steinberger, Managing Director

▭▭ The Equipment Carrier saves an unbelievable amount of time, because the installation of lamps is much simpler and faster. I no longer have to drill any holes. ▭▭



ELEKTRO HOGREVE & KRÖGERRECKLENFORT GMBH

Kevin Liefer, Installer

▭▭ The entire Thermo Box system allows you to work much faster and cleaner. ▭▭

03



CONCRETE

CONCRETE BOXES

The multitalents in concrete



ELECTRONICS BOX

70% more installation space – and thus room – in the box.

MULTIFUNCTIONAL

One concrete box for many applications! Switch box with and without Wings, electronics box, ceiling box, also usable for fair-faced concrete.

MEMBRANE ENTRIES

The membrane ensures a concrete-tight conduit entry without tools. The membrane completely encloses the conduit and prevents concrete from seeping in.

FAST INSTALLATION

Fast insertion of conduits and cables up to 32 mm; just slit the membrane open with the knife, insert the conduit – done!

M-SERIES MEMBRANE BOX

Junction box, Concrete wing box, Ceiling junction box, Large conduit box and Electronics box

Membrane technology with conduit grip

- + Combination entries without tools for cables and conduits from M15 - M32
- + Absolutely concrete-tight
- + Reliably strain-relieved

Push-on Wings

- + For fastening to steel reinforcement
- + Standard distance to door formwork 15 cm
- + Concrete cover from 20 – 60 mm
- + No counter bearing or support element necessary

Membrane sealing lip

- + Clean finish
- + Ideal for fair-faced concrete
- + Prevents the ingress of concrete slurry

Large conduit entry M32

- + Pulling in of pre-assembled cables

SCS connection technology

- + Stable in-line connection
- + Combination spacing 71 mm
- + Easy through-wiring
- + Simple installation of pre-wired devices

M1



M2



M3



Designation	Article no.	PU	OC	PL	Price unit	Price in €
Membrane Box M1 60	P760	50	50	1,400	100 pcs	406.38
Membrane Box M1 35 (with 35 mm luminaire outlet)	P763	50	50	1,400	100 pcs	452.38
Membrane Box M2 60	P914	50	50	1,800	100 pcs	353.85
Membrane Box M2 35 (with 35 mm luminaire outlet)	P915	50	50	1,800	100 pcs	353.85
Membrane Box M3 60	P912	50	50	2,700	100 pcs	330.04
Membrane Box M3 35 (with 35 mm luminaire outlet)	P913	50	50	2,700	100 pcs	330.04

Accessories for Membrane box	Article no.	PU	OC	PL	Price unit	Price in €
Wings for concrete range	P761	50	500	12,000	100 pcs	61.30
Push-on Frame for Membrane Box M1	P762	50	200	4,800	100 pcs	156.65
Nailer for concrete construction products	P752	1	1	-	1 pcs	220.63
Equipment Carrier GET-80	P773	25	150	4,800	100 pcs	156.65

Dimensions	M1	M2	M3
Length	110 mm	90 mm	90 mm
Width	75 mm	75 mm	75 mm
Depth	85 mm	68 mm	48 mm
Wingspan	300 mm	280 mm	280 mm
Lateral membrane entries	2x M15; 4x M15/M20/M25; 2x M15/M20/M25/M32	6x M15/M20/M25	6x M15/M20/M25
Membran entries from the rear	2x M15/M20/M25; 2x M12	1x M25/M32; 2x M12	1x M25/M32; 2x M12

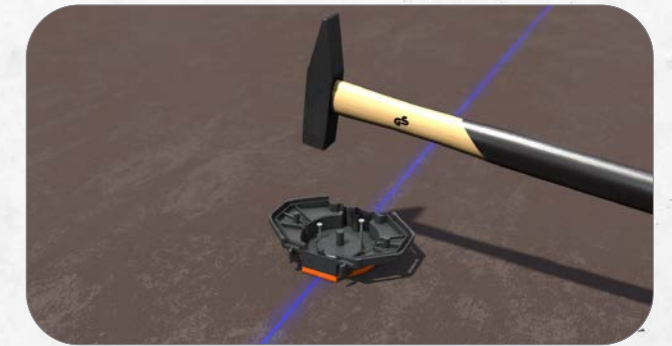
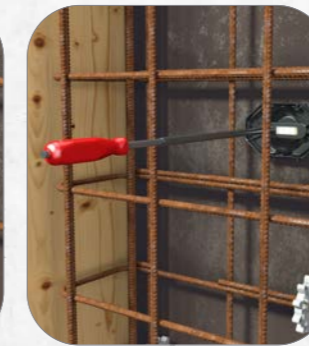
Installation instructions

Scan or click for further information



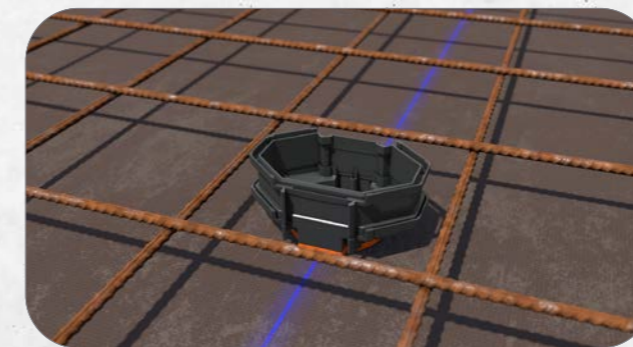
MEMBRANE BOX

Wall / Ceiling mounting: nail to the formwork



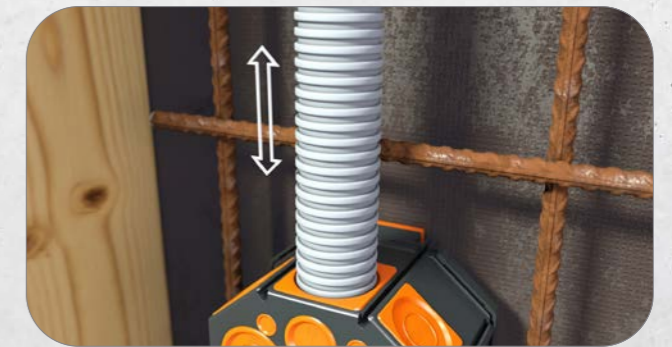
1. Attach the cover of the membrane box to the wall or the ceiling in the marked place with nails. If the reinforcement has already been installed, the PRIMO Nailer (P752) helps with simple and injury-free fastening.

2. The integrated nail holder in the Front Part enables simple installation. Fasten the Front Part to the formwork with nails. Attach steel reinforcement.



3. Push the Push-on Frame (P762) onto the membrane box M1 for flexible extension and more installation space. Place the membrane box.

4. Cut the membrane with a cutter knife.



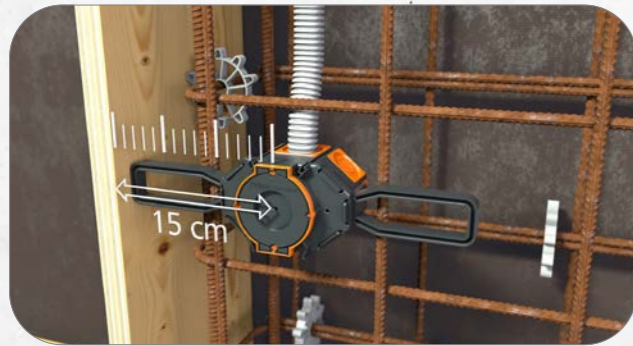
5. Insert conduits as desired without additional tools. The membrane technology ensures an absolute concrete-tight seal.

6. No shortening of conduits necessary thanks to reliable strain relief by conduit grip.

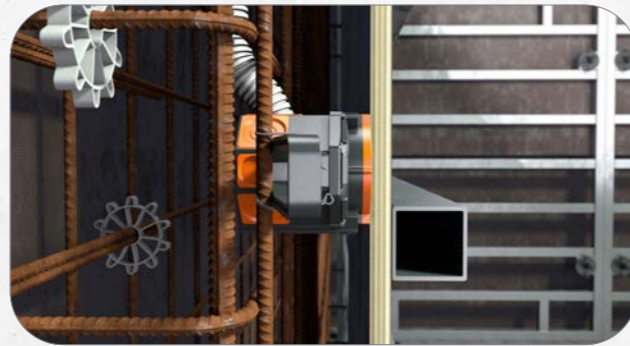
Installation instructions

MEMBRANE BOX

Wall mounting: With Wings (P761)



1. Push Wings (P761) onto the membrane box M1, M2 or M3. Wings (P761) set the 15 cm standard distance to door formwork and enable easy mounting. Fasten the Wings to the steel reinforcement with wire.



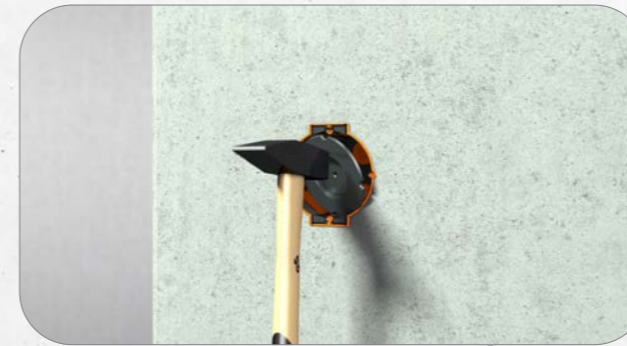
2. Flexible Wings (P761) adapt themselves to the respective concrete cover. Concrete covers of 20 – 40 mm or 40 – 60 mm. Concreting can take place after placement of the opposing formwork.



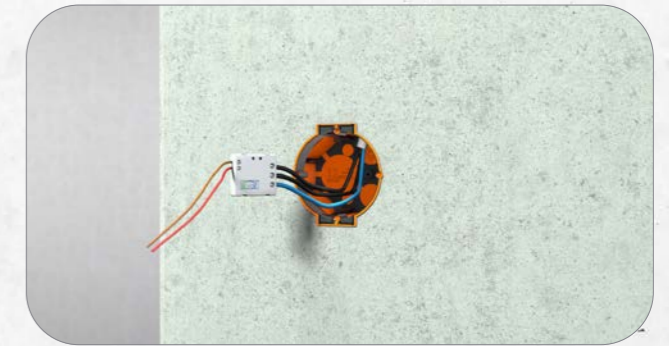
Installation instructions

MEMBRANE BOX

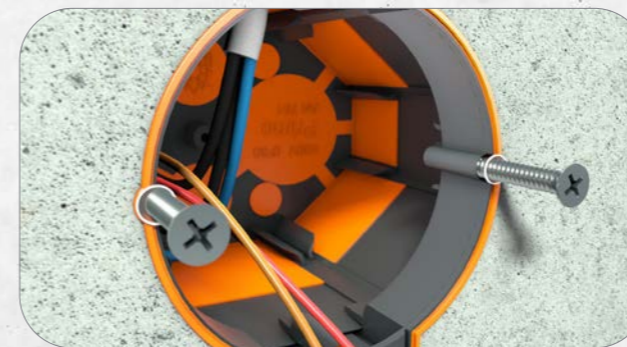
Installation after concreting



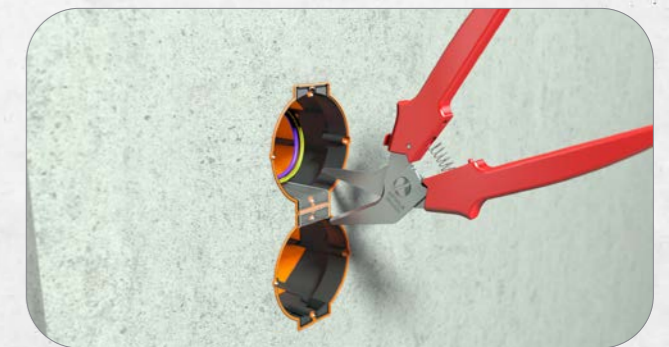
1. After concreting, the cover can be opened with a hammer blow.



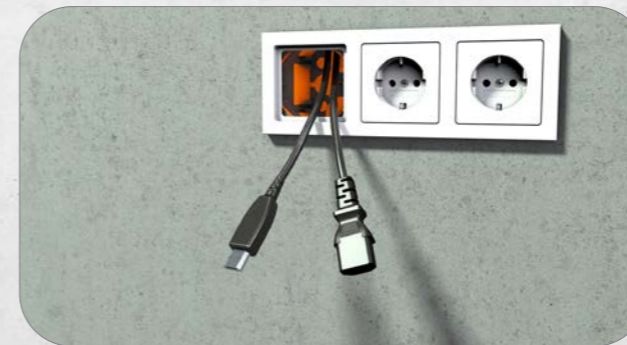
2. Usable as an electronics box due to octagonal shape.



3. Thanks to the flexible membrane skin, device screws can easily be inserted.



4. If necessary, remove the SCS connecting web effortlessly with the PRIMO Box Cutter (P845).



5. Prefabricated lines can be installed through large conduit entry M32.



6. Ceiling installation: Ceiling hook holder according to EN 60670.

CEE BOX

The lightning-fast three-phase installation

Push-on Wings

- + For fastening to steel reinforcement
- + Standard distance to door formwork 15 cm
- + No counter bearing or support element necessary
- + Concrete cover from 20 – 60 mm



Large conduit entry M32

- + Pulling in of pre-assembled cables

Membrane technology with conduit grip

- + Combination entry M15 – M32 without tools
- + Insertion of (earth) cable is possible
- + Absolutely concrete-tight
- + Reliable strain relief
- + No reworking – no conduit cutting

Cover with nail fixing

- + Simple mounting on the formwork
- + Large opening: simple wiring when used as a junction box

Octagonal design

- + 70% more installation space
- + Ideal bending radius
- + Installation depth 85 mm



IP 44 Sealing Ring

- + Required protection class according to DIN 60309
- + Positioning between cover and switch

Areas of use

- + 3 cables & 5 cables
- + 16 A



Designation	Article no.	PU	OC	PL	Price unit	Price in €
Membrane Box M1 CEE	P953	10	10	1,260	100 pcs	1,181.90

Dimensions	M1 CEE
Length	110 mm
Width	74 mm
Depth	85 mm
Wingspan	300 mm
Installation opening	70 mm
Lateral membrane entries	2x M15; 4x M15/M20/M25; 2x M15/M20/M25/M32
Membran entries from the rear	2x M15/M20/M25; 2x M12

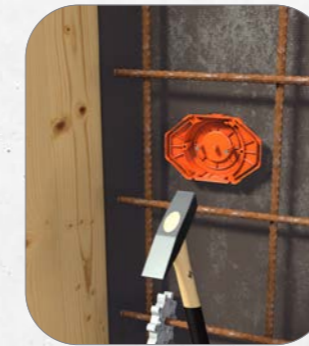
Installation instructions

Scan or click for further information



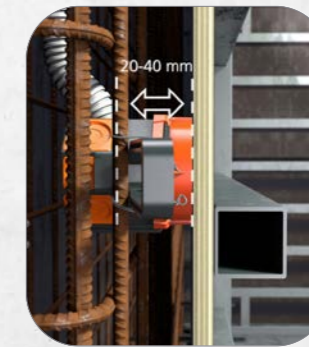
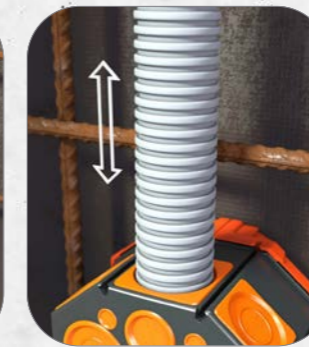
CEE BOX

Cover – Box – Sealing Ring



1. Variant 1: Nail the Front Part to the formwork. The integrated nail holder in the Front Part enables simple installation (l). Variant 2: Push the Push-on Wings (P761) onto the membrane box and fasten to the steel reinforcement with wire (r).

2. Open the membrane with a cutter knife. Large conduit entry M32.



3. Insert cables or (rigid) conduits M20, M25 and M32. Absolutely concrete-tight entries due to membrane technology (l). No shortening of conduits necessary thanks to reliable strain relief by conduit grip (r).

4. Flexible Wings (P761) adapt themselves to the respective concrete cover of 20 - 40 mm or 40 - 60 mm.



5. Simple opening with a hammer blow after concreting.



6. Seal prevents the penetration of moisture. Easy installation of CEE flush-mounted sockets.

BUILDING SITE



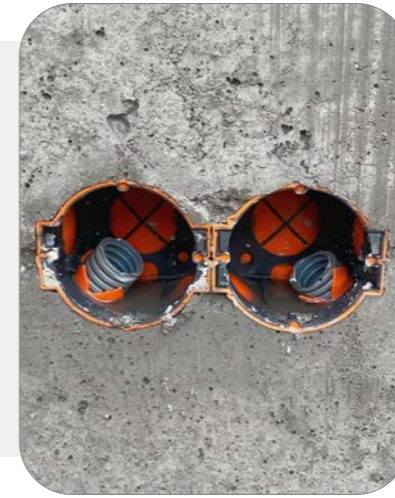
CUSTOMER EXPERIENCES

from the building site

ELEKTRO SPATENEDER

Jonathan Sabo

▯▯ The Membrane Box offers you a huge range of options, it's a phenomenon. I no longer have to worry about different products. ▯▯



ELEKTRO JANEL

Samuel Filicko, Installer

▯▯ For me, the octagonal shape of the M-Series took a bit of getting used to at first. However, it gives me the option of installing many different components without breaking my fingers. ▯▯



UNIVERSAL JUNCTION BOX WITH MEMBRANE

Quickly installed with lots of installation space



Designation	Article no.	PU	OC	PL	Price unit	Price in €
Universal Junction Box for concrete (without membrane)	P421	50	50	1,200	100 pcs	331.06
Universal Junction Box U60 3-part	P421-60-3	50	50	1,200	100 pcs	680.00
Universal Junction Box U70 3-part	P421-70-3	50	50	1,200	100 pcs	680.00

Accessories for Universal Junction Box	Article no.	PU	OC	PL	Price unit	Price in €
Nailer for concrete construction products	P752	1	1	-	1 pcs	220.63
Wings for concrete range	P761	50	500	12,000	100 pcs	61.30
Divider web for Universal Junction Box U60/U70	P421-T	50	500	-	100 pcs	133.57

Dimensions			
Diameter	100 mm	Installation depth	111 mm
Installation diameter	60 mm	Depth incl. cover	120 mm

Installation instructions

Scan or click for further information



UNIVERSAL JUNCTION BOX

Cut, insert, strain-relieved!



1. Nail the Front Part to the formwork. Ideal for installation situations with lots of reinforcement due to low installation height. Place the box on the Front Part.



2. Open the membrane with a cutter knife. Absolutely concrete-tight entries due to membrane technology.



3. Insert cables or (rigid) conduits M40 without tools. Reliable strain relief due to conduit grip. Optional Divider (P421-T) web for two isolated circuits in one box.



4. Close the box with the cover and concrete the ceiling. Tap in the Front Part with a hammer after concreting.



5. Ceiling hook holder according to EN 60670.



6. Use as a junction box with lots of installation space.

Scan or click
for further
information



CONCRETE BOX 2.0

The classic space wizard

SCS connection technology

- + Permanent connection
- + Easy through-wiring
- + Simple installation of pre-wired devices
- + Combination spacing 71 mm



Large conduit entry up to M32

- + Pulling in of pre-assembled cables

3-in-1:

- + Junction box, M32 Large conduit box and Electronics box

Octagonal design

- + Usage as electronics box
- + 70% more installation space
- + Ideal bending radius
- + Installation depth: 90 mm

Installation instructions



Precise alignment due to integrated markings on the cover. The integrated nail holder in the cover enables simple installation. Stable stringing together of further covers in the combination spacing of 71 mm possible.



Punch holes for installation conduits M20/M25 with punch pliers (P523 / P647). Drill holes for installation conduits M32 with a step drill. Insert installation conduits. M20/M25 and large conduit entry M32 possible.



Designation	Article no.	PU	OC	PL	Price unit	Price in €
Concrete Box 2.0	P731	50	50	1,200	100 pcs	236.28

Accessories for Concrete Box 2.0	Article no.	PU	OC	PL	Price unit	Price in €
Nailer for concrete construction products	P752	1	1	-	1 pcs	220.63

Dimensions			
Diameter	60 mm	Length / Wingspan	110 mm
Installation depth	90 mm	Wing height	-
Installation opening	60 mm	Width	70 mm
Entries	6 conduit / cable entries up to M25, of which 2 conduit entries up to M32 are possible		

Scan or click
for further
information



CONCRETE WING BOX 2.0

The classic space wizard with Wings

4-in-1:

- + Junction box, Concrete wing box, M32 Large conduit box and Electronics box



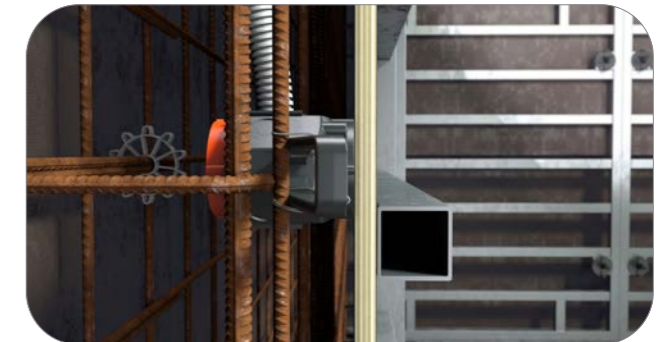
Wings

- + For fastening to steel reinforcement
- + Standard distance to door formwork 15 cm
- + No counter bearing or support element necessary
- + Concrete cover from 20 – 60 mm

Installation instructions



Punch holes for installation conduits with punch pliers (P523 / P647) or drill them with a step drill. Insert conduits M20/M25 or M32. The Wings set the standard distance to the door formwork of 15 cm.



The concrete box can be rotated by 180° for different concrete covers. Fasten the Wings to the steel reinforcement with wire. Flexible wings adapt themselves to the respective concrete cover.



Designation	Article no.	PU	OC	PL	Price unit	Price in €
Concrete Wing Box 2.0	P730	50	50	1,000	100 pcs	344.42

Accessories for Concrete Wing Box 2.0	Article no.	PU	OC	PL	Price unit	Price in €
Nailer for concrete construction products	P752	1	1	-	1 pcs	220.63

Dimensions			
Diameter	60 mm	Length / Wingspan	300 mm
Installation depth	90 mm	Wing height	38 mm
Installation opening	60 mm	Width	70 mm
Entries	6 conduit / cable entries up to M25, of which 2 conduit entries up to M32 are possible		

04



reddot winner 2022
innovative product

INSTALLATION HOUSINGS

XL-SERIES INSTALLATION HOUSING

The allrounder for individual requirements



reddot winner 2022
innovative product

AWARD-WINNING QUALITY

The smart technology of the XL-Series has won the Red Dot Award among others. Apart from design aspects, it was above all the functionality, innovation and product quality that were decisive for the awards.

INDIVIDUALLY USABLE

Thanks to various Front Parts in a square (68 – 75 mm) or round (68 – 180 mm) form or with mineral fibre board (145 – 195 mm) for individual cut-outs, the XL-Series is suitable for every conceivable area of application.

MEMBRANE TECHNOLOGY

The membrane completely encloses the inserted conduits and cables, as a result of which the system remains absolutely concrete-tight. The integrated conduit grip guarantees reliable strain relief.

FAST INSTALLATION

The integrated nail fixation allows easy and fast mounting on the formwork. The membranes can be opened with a simple cutter within seconds. You can leave the additional punch pliers at home.

XL-SERIES INSTALLATION HOUSING

Excellent concrete installation with membrane technology

Removable cover

- + Pull cables and lines into the housing before concreting
- + Absolutely concrete-tight thanks to integrated sealing lip

Push-on Wings

- + For fastening to steel reinforcement
- + Concrete cover from 20 – 60 mm

Large conduit entry M32/M40

- + Pulling in of pre-assembled cables

Membrane technology with conduit grip

- + Combination entry M9 to M40 without tools
- + Absolutely concrete-tight
- + Reliably strain-relieved thanks to conduit grip
- + No reworking – no conduit cutting

Additional connection space

- + Suitable for electronic components, for example
- + Universal Tunnel for additional installation space optionally available



reddot winner 2022
innovative product



XL 200



XL 250



Designation	Article no.	PU	OC	PL	Price unit	Price in €
XL 150 Installation Housing	P870	10	10	320	100 pcs	1,202.72
XL 200 Installation Housing	P871	10	10	280	100 pcs	1,843.79
XL 250 Installation Housing	P872	10	10	160	100 pcs	6,602.15

Dimensions	XL 150	XL 200	XL 250
Length excl. Tunnel	208 mm	251 mm	351 mm
Length incl. Tunnel	334 mm	377 mm	477 mm
Depth incl. Front Part	120 mm	120 mm	138 mm
Shape	round, with short Tunnel	round, with short Tunnel	round, with short Tunnel
Installation diameter	0 – 140 mm	0 – 185 mm	0 – 285 mm
Max. installation depth	110 mm	110 mm	110 mm
Housing diameter Ø	157 mm	200 mm	300 mm
Conduit entry with membrane	4x M9 5x M11 2x M14	1x M11 4x M9	2x M14 4x M9
Combination entries with membrane	2x M12/M16; 4x M16/M20; 2x M20/M25; 2x M25/M32; 2x M12/M16 (only with short Tunnel); 2x M32/M40 (only with short Tunnel)	4x M12/M16; 4x M16/M20; 6x M20/M25; 2x M25/M32; 2x M12/M16 (only with short Tunnel); 2x M32/M40 (only with short Tunnel)	2x M12/M16; 2x M16/M20; 6x M20/M25; 2x M25/M32; 4x M32/M40; 2x M12/M16 (only with short Tunnel); 2x M32/M40 (only with short Tunnel)
Max. LED lamp power	50 Watt	50 Watt	50 Watt
Max. LV/HV/TC lamp power	50 Watt	75 Watt	100 Watt

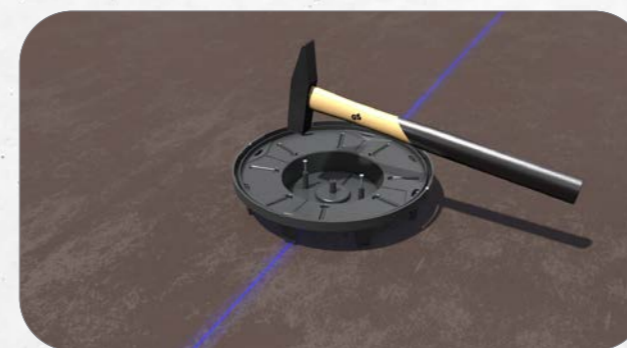
Installation instructions

Scan or click for further information



XL-SERIES: CAST-IN-PLACE CONCRETE

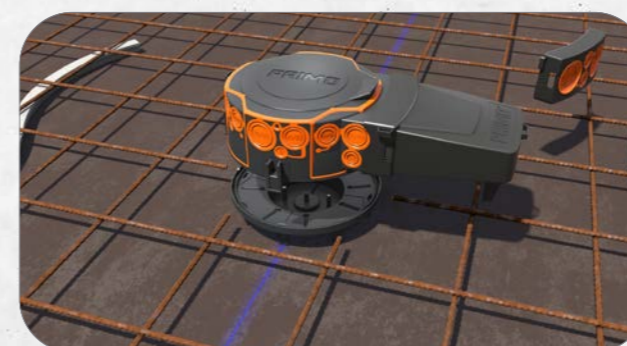
Ceiling installation: nail to the formwork



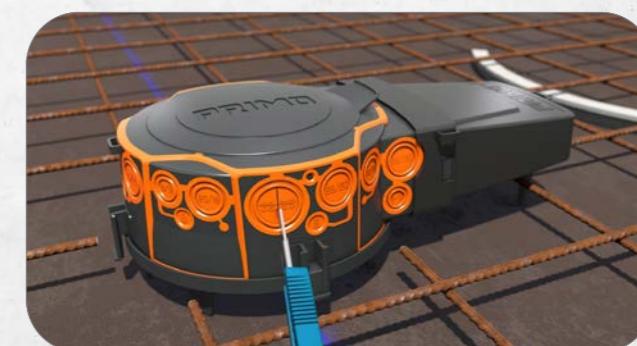
1. With the help of the integrated marking on the Front Part, align the Installation Housing in the precise position on the formwork. Simple and fast mounting due to integrated nail fixation. If the reinforcement has already been installed, the PRIMO Nailer (P752) helps with simple and injury-free fastening.



2. Alternatively, a universal Front Part can be used for individual cut-outs. Various openings and shapes are possible.



3. Place the Installation Housing on the Front Part. The optional additional Universal Tunnel (P873) offers high flexibility during installation. Subsequently, the Installation Housing can still be rotated by 360°. Supports below the Universal Tunnel (P873) ensure that no further reinforcement has to be cut out.



4. Open the membrane with a cutter knife. Insert cables and (rigid) conduits as desired without additional tools. Thanks to the membrane technology, the system remains absolutely concrete-tight. The combination entries offer space for cables and conduits in sizes M9 to M40.



5. The conduit stop prevents the conduit from being pushed in too far. Botherome and time-consuming rework and shortening of the conduits are consigned to the past. This leads to more efficient consumption of conduit material in the long run.

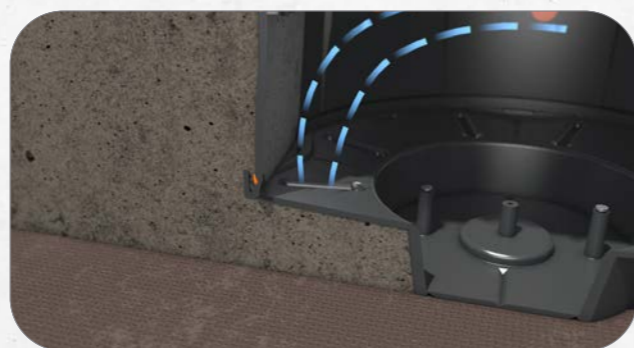


6. The removable cover enables cables and conduits to be pulled into the Installation Housing even before concreting. Thanks to the integrated membrane sealing lip, everything remains absolutely concrete-tight.

Ceiling installation: Nail to formwork (continued)



7. Fasten the Installation Housing to the reinforcement for additional security.



8. No air inclusions and cluster formation thanks to ventilation slits. The XL-Series is thus ideally suited for fair-faced concrete.



9. The ideal thermal management in the Installation Housing guarantees optimal air circulation. This prevents a build-up of heat in the device, even when using the additional Tunnel (P873).



10. Simple opening of the Front Part with a hammer blow after concreting.



11. Alternative: Universal Front Part for individual cut-outs. Various openings and shapes are possible.



12. Install any built-in devices such as luminaires or loudspeakers.

Installation instructions

Wall mounting: With Wings (P761)



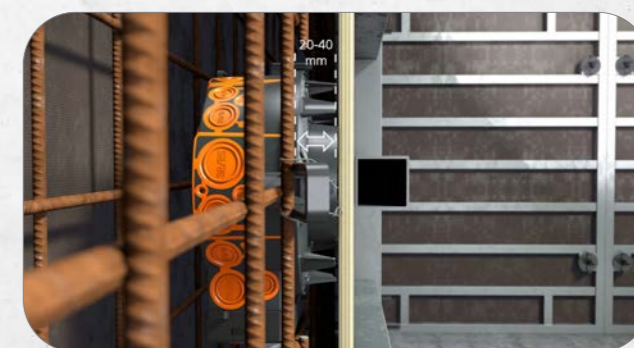
1. Fasten the Push-on Wings (P761) to the housing. Fasten the Wings (P761) to the steel reinforcement with wire.



2. Open the membrane with a cutter knife. Combination entry of cables and (rigid) conduits from M9 - M40 without tools. The membrane technology guarantees absolute concrete-tight entries.



3. A third wing (P761) can be mounted for additional hold.



4. Flexible Wings (P761) adapt themselves to the respective concrete cover. Concrete covers of 20 - 40 mm or 40 - 60 mm are possible. Concreting can take place after placement of the opposing formwork.



5. Open the Front Part with a hammer blow after concreting.



6. Install any built-in devices such as luminaires or loudspeakers.

UNI-FLEXX FOR XL 150

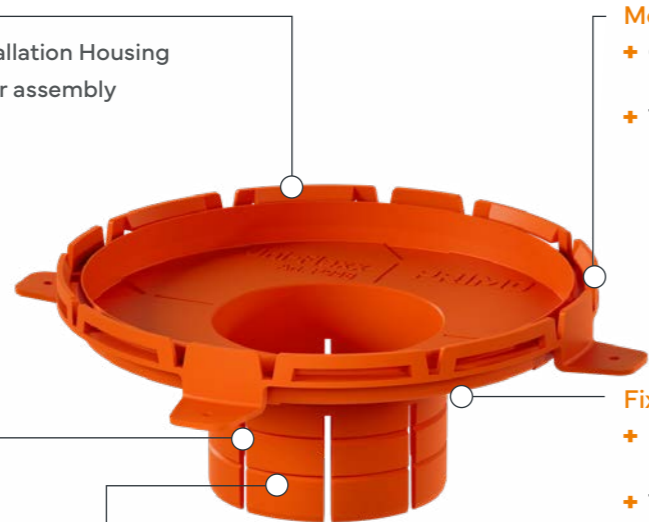
Greater flexibility in concrete construction and innovation for insulated hollow ceilings

SMR rail

- + Firmly connected to the Installation Housing
- + Can still be aligned 360° after assembly
- + Time savings due to simple and fast assembly

Installation segments

- + Individually adaptable to the ceiling thickness (10 – 50 mm)
- + Can be shortened in cm steps
- + Greater installation flexibility



Mounting tabs

- + Guide for screws or impact anchors
- + Time savings due to simple and fast assembly

Fixing tabs

- + Fixing in the drill hole directly after insertion
- + Time savings due to simple and fast assembly

68 mm installation opening

- + Suitable for all common luminaires
- + The electrician can make the mounting opening him/herself

ZUBEHÖR



XL 150 Einbaugehäuse



Universal-Trafotunnel



Designation	Article no.	PU	OC	PL	Price unit	Price in €
XL 150 Uni-Flexx	P948	10	10	1.000	100 pcs	2,437.39

Accessories for Uni-Flexx	Article no.	PU	OC	PL	Price unit	Price in €
XL 150 Installation Housing	P870	10	10	320	100 pcs	1,202.72
XL 150/200/250 Tunnel	P873	10	10	600	100 pcs	1,696.08
Diamond Drill Bit soft Impact 74 mm	P859	1	-	-	1 pcs	118.43

Dimensions			
Diameter	195 mm	Hole diameter in wood / concrete	74 mm
Installation opening	68 mm	Ceiling thickness	10 – 50 mm

Installation instructions

Scan or click for further information



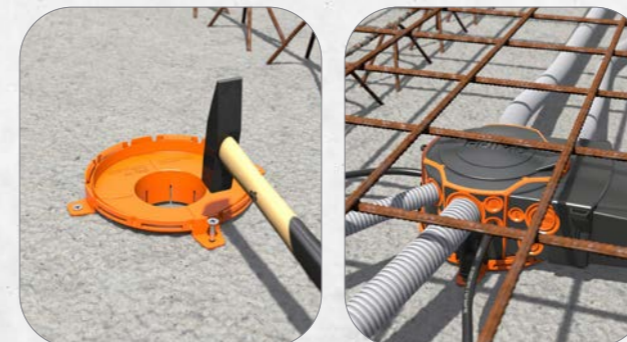
UNI-FLEXX

No expensive core drilling, no damaged insulation

Concrete



1. Drill a 74 mm hole in the filigree slab. The 74 mm Diamond Drill Bit soft Impact (P859) is suitable for this. If necessary, cut off the installation segments to adjust the installation depth to the slab thickness. Then insert the Uni-Flexx (P948) into the drilled hole.



2. Drill holes through the mounting tabs and fasten Uni-Flexx (P948) to the ceiling with impact anchors. Place the XL 150 (P870) Installation Housing. Open the membrane with a cutter knife in order to insert cables and conduits.



3. Connect recessed luminaires or other built-in devices from underneath and insert into the 68 mm installation opening. Done!

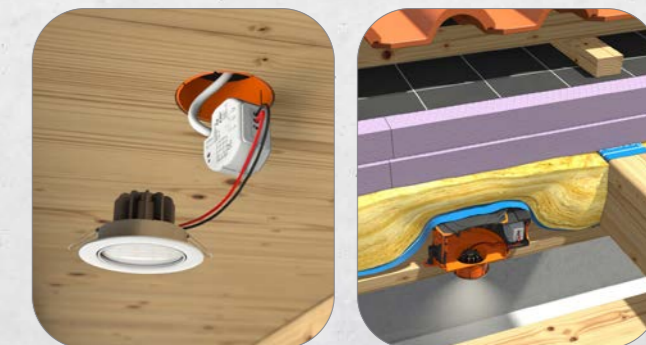
Wood



1. Drill a 74 mm hole in the visible formwork. The 74 mm Carbide Diamond Hole Saw (P797HD-74) is suitable for this. If necessary, cut off the installation segments to adjust the installation depth to the ceiling thickness. Then insert the Uni-Flexx (P948) into the hole.



2. Fasten Uni-Flexx (P948) to the visible formwork with screws. Place the XL 150 Installation Housing (P870). Open the membrane with a cutter knife in order to insert cables and conduits.



3. Connect recessed luminaires or other built-in devices from underneath and insert into the 68 mm installation opening. Done! Installation Housing and Uni-Flexx protect the insulation in the exposed loft. Energy efficiency and fire protection are thus maintained.

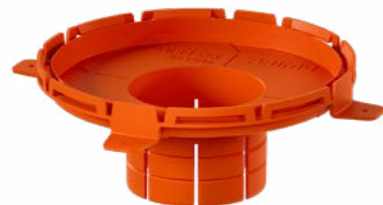
XL-SERIES: ACCESSORIES

The perfect supplement

Extension Rings



Uni-Flexx



Universal Tunnel



Front Parts



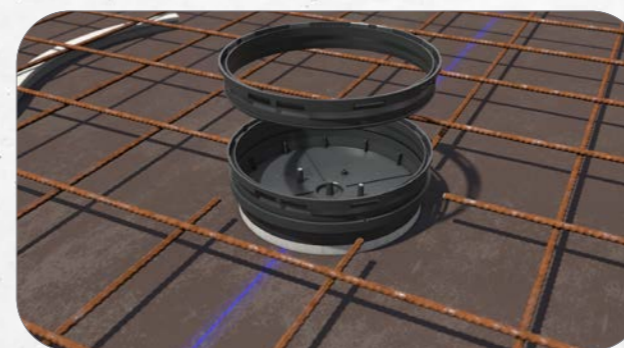
reddot winner 2022
innovative product

Accessories for die XL-Serie	Article no.	PU	OC	PL	Price unit	Price in €
Wings for concrete range	P761	50	500	12,000	100 pcs	61.30
XL 150/200/250 Tunnel	P873	10	10	600	100 pcs	1,696.08
XL 150 Extension Ring	P906	10	10	1,600	100 pcs	1,189.30
XL 200 Extension Ring	P907	10	10	1,000	100 pcs	1,738.79
XL 150 Front Part with mineral fibre board	P874	10	10	910	100 pcs	1,987.84
XL 150 Front Part - 68 mm	P877	10	10	1,800	100 pcs	643.69
XL 150 Front Part - 75 mm	P878	10	10	1,800	100 pcs	643.69
XL 150 Front Part - 85 mm	P879	10	10	1,800	100 pcs	643.69
XL 150 Front Part - 80 mm	P880	10	10	1,800	100 pcs	643.69
XL 150 Front Part - 90 mm	P881	10	10	1,800	100 pcs	643.69
XL 150 Front Part - 95 mm	P883	10	10	1,800	100 pcs	643.69
XL 150 Front Part - Square 68 mm	P884	10	10	1,800	100 pcs	643.69
XL 150 Front Part - Square 75 mm	P885	10	10	1,800	100 pcs	643.69
XL 150 Front Part - 100 mm	P903	10	10	1,800	100 pcs	643.69
XL 150 Uni-Flexx	P948	10	10	1,000	100 pcs	2,437.39
XL 200 Front Part with mineral fibre board	P875	10	10	900	100 pcs	2,189.43
XL 200 Front Part - 100 mm	P886	10	10	1,120	100 pcs	878.69
XL 200 Front Part - 110 mm	P887	10	10	1,120	100 pcs	878.69
XL 200 Front Part - 125 mm	P888	10	10	1,120	100 pcs	878.69
XL 200 Front Part - 145 mm	P889	10	10	1,120	100 pcs	878.69
XL 200 Front Part - 160 mm	P890	10	10	1,120	100 pcs	878.69
XL 200 Front Part - 180 mm	P891	10	10	1,120	100 pcs	878.69
XL 200 Front Part - 165 mm	P892	10	10	1,120	100 pcs	878.69
XL 250 Front Part with mineral fibre board	P876	5	5	255	100 pcs	2,886.55

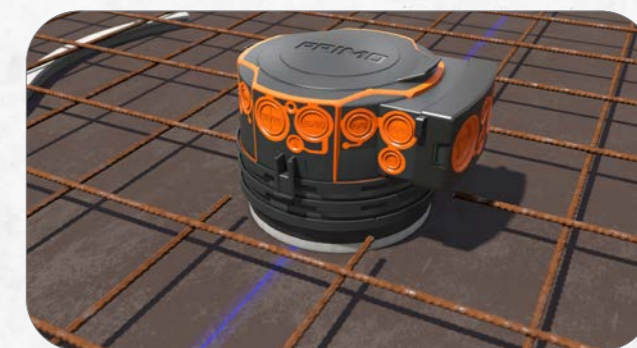
Accessories

WELL-CONCEIVED ACCESSORIES

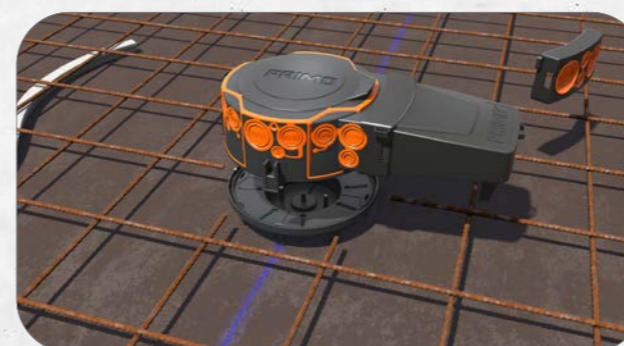
Complete flexibility



Push Extension Ring(s) (P906, P907) onto the Front Part. An Extension Ring extends the depth by 20 mm and guarantees more installation space. Several Extension Rings can be combined with one another until the desired installation depth is achieved.



Push the Installation Housing onto the Extension Ring.



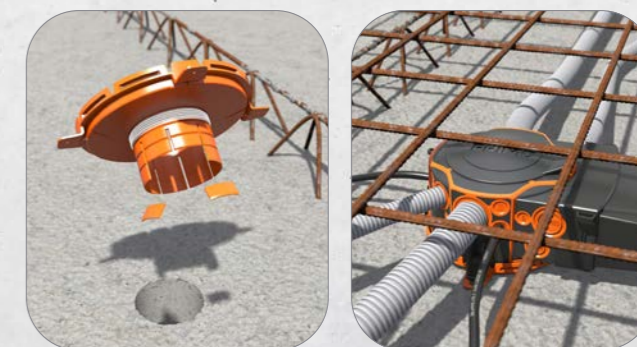
Short Tunnels can be replaced by **Universal Tunnel (P873)** for additional installation space.



Optimum air circulation is still guaranteed thanks to ideal thermal management.



With the Uni-Flexx (P948), spotlights, loudspeakers or other built-in devices can also be retrofitted in the already cast precast slab with in-situ topping. The required core drilling is much smaller and thus considerably cheaper than would otherwise be the case.



Insert **Uni-Flexx (P948)** into the drill hole and fasten to the ceiling with impact anchors. Place the XL 150 Installation Housing (P870). A Tunnel can optionally be attached.

BUILDING SITE



CUSTOMER EXPERIENCES

from the building site

TANGL KURT ELEKTROTECHNIK

Kurt Tangl, Owner

□□ The entries with membrane technology make things so much easier. We usually don't have the space to open entries with pliers. Without PRIMO it would often have been a disaster due to the iron density. □□



ITECH ELEKTRO GMBH

Walter Kunz, Managing Director

□□ The system of boxes and luminaire housings with toolless entries and integrated conduit grip is very innovative. It saves us a significant amount of time. It is one of the most important factors in times where there is a shortage of skilled labour. If I haven't got anyone on the building site, it should at least be possible to save working time. □□



C-SERIES WALL AND CEILING TRANSITIONS

The clever connection

- Smart shape**
- + Ideal bending radius 30°
 - + Secure and convenient pulling-in of cables
 - + Support anchor for stable hold
- Push-fit system**
- + Connection on the end piece
 - + Stable in-line connection
 - + Various sizes combinable with one another
 - + Combination of grommets and transitions possible



- Push-on Wings**
- + For fastening to steel reinforcement
 - + No counter bearing or support element necessary
 - + Concrete cover from 20 – 40 mm
 - + Wings also usable for XL-Series Installation Housings, M-Series Concrete Boxes and Universal Junction Boxes



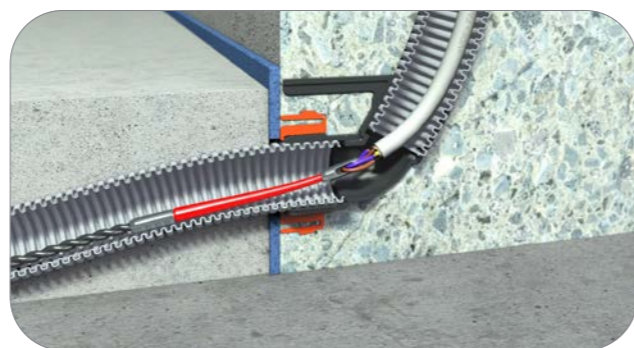
C25

C32

Installation instructions



Insert sleeves and transitions into the nailing base. Firm and stable combination of all sizes thanks to push-fit system. Guaranteed concrete-tight and strain-relieved connection.



Ideal bending radius of 30° for pulling cables through quickly and easily.



Designation	Article no.	PU	OC	PL	Price unit	Price in €
Wall and Ceiling Transition C20	P956-20-NK	50	400	9,600	100 pcs	237.95
Wall and Ceiling Transition C25	P956-25-NK	50	300	7,200	100 pcs	487.64
Wall and Ceiling Transition C32	P956-32-NK	50	300	6,000	100 pcs	487.64

Accessories	Article no.	PU	OC	PL	Price unit	Price in €
Wings for concrete range	P761	50	500	12,000	100 pcs	61.30

Dimensions	Length	Width	Height	Wingspan
Wall and Ceiling Transition C20	50 mm	54 mm	70 mm	233 mm
Wall and Ceiling Transition C25	54 mm	59 mm	75 mm	237 mm
Wall and Ceiling Transition C32	62 mm	69 mm	84 mm	245 mm

C-SERIES SLEEVES AND GROMMETS

Connected quickly and simply

- Simple installation**
- + Time-saving nail guide
 - + Large adhesive surface
- Concrete multi-talent**
- + Ceiling or wall installation
 - + Cast-in-place concrete and fair-faced concrete
- Push-fit system**
- + Connection on the end piece
 - + Stable in-line connection
 - + Various sizes combinable with one another
 - + Combination of grommets and transitions possible



- Push-on Wings**
- + For fastening to steel reinforcement
 - + No counter bearing or support element necessary
 - + Concrete cover from 20 – 40 mm
 - + Wings also usable for XL-Series Installation Housings, M-series Concrete boxes and Universal Junction Boxes

- Conduit grip**
- + Absolutely concrete-tight
 - + Reliable strain relief
 - + No reworking – no conduit cutting



End and Transition Grommets C20 – C40

Grip Type Couplers C20 – C40



Designation	Article no.	PU	OC	PL	Price unit	Price in €
Grip Type Coupler C20	P955-20	100	1,000	24,000	100 pcs	53.07
Grip Type Coupler C25	P955-25	100	800	19,200	100 pcs	62.17
Grip Type Coupler C32	P955-32	100	500	12,000	100 pcs	113.18
Grip Type Coupler C40	P955-40	100	500	10,000	100 pcs	202.90
End and Transition Grommet C20	P955-20-NK	50	500	12,000	100 pcs	75.10
End and Transition Grommet C25	P955-25-NK	50	400	9,600	100 pcs	125.34
End and Transition Grommet C32	P955-32-NK	50	300	7,200	100 pcs	125.34
End and Transition Grommet C40	P955-40-NK	50	300	6,000	100 pcs	598.29
Transition sleeve M20/M25 transparent-red	P833	50	500	15,000	100 pcs	126.11

Dimensions	Length	Width	Height	External diameter	Wingspan
Grip Type Coupler C20	-	-	53 mm	26 mm	-
Grip Type Coupler C25	-	-	53 mm	31 mm	-
Grip Type Coupler C32	-	-	61 mm	38 mm	-
Grip Type Coupler C40	-	-	61 mm	46 mm	-
End and Transition Grommet C20	50 mm	36 mm	55 mm	26 mm	233 mm
End and Transition Grommet C25	54 mm	41 mm	55 mm	31 mm	237 mm
End and Transition Grommet C32	62 mm	48 mm	63 mm	38 mm	245 mm
End and Transition Grommet C40	70 mm	56 mm	63 mm	46 mm	253 mm
Transition sleeve M20/M25 transparent-red	55 mm	48 mm	50 mm	33 mm	200 mm

Scan or click for further information



Scan or click for further information

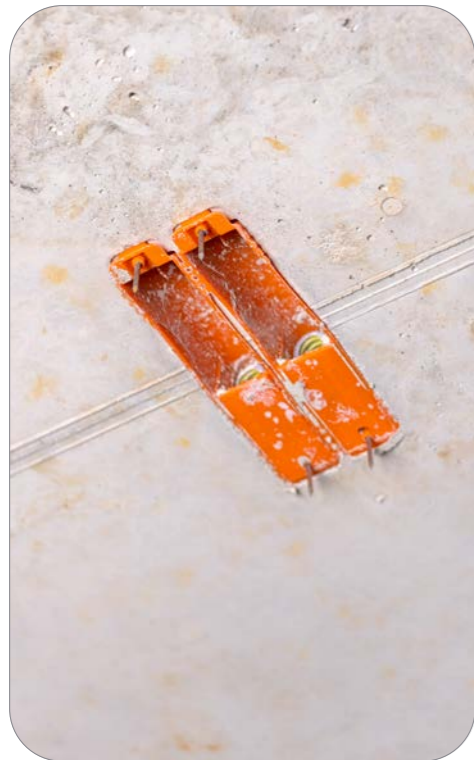


FORMWORK PROTECTOR QUICKSTAR

A clever helper in concrete construction

Advantages

- + The conduit entry provides a strong hold
- + Variable perforation allows for multiple combinations
- + Absolutely concrete-tight
- + With demolding aid and pre-mounted nails
- + With stabilizing flap



Designation	Article no.	PU	OC	PL	Price unit	Price in €
Formwork Protector Quickstar	P858	30	30	3,840	100 pcs	229.37

Dimensions			
Length	170 mm	Conduit entry	M20 to M25
Width	30 mm		
Depth	40 mm		

Scan or click for further information



THE CLEVER 1-FOR-2 SYSTEM

End and transition grommets, wall and ceiling sleeves

1-for-2 system: conduit grip for two sizes

- + M20/M25 and M32/M40
- + Reduces warehousing costs
- + Absolutely concrete-tight
- + Reliable strain relief
- + No reworking – no conduit cutting



Wings

- + Versions with and without Wings
- + Fastening to steel reinforcement



Push-fit system

- + Connection on the end piece
- + Permanent connection

Concrete multi-talent

- + Ceiling or wall installation
- + Cast-in-place concrete and fair-faced concrete



Designation	Article no.	PU	OC	PL	Price unit	Price in €
Wall and Ceiling Transition M20/M25	P419	50	400	9,600	100 pcs	389.04
Wall and Ceiling Transition 30° M32/M40 with Wings	P755	25	100	2,400	100 pcs	529.88
Wall and Ceiling Transition 30° M32/M40	P756	50	200	4,000	100 pcs	433.54

Dimensions	M20/M25	M32/M40
Diameter of lower part	30 mm	65 x 64 mm
Long transition	68 mm	79 mm
Diameter of transition	33 mm	49 mm
Number of entries	1x M20 or M25 conduit	1x für M32 or M40 conduit
Wingspan	-	210 mm

Designation	Article no.	PU	OC	PL	Price unit	Price in €
End and Transition Grommet M20/M25 with Wings	P753	50	200	4,800	100 pcs	238.45
End and Transition Grommet M20/M25	P754	50	400	9,600	100 pcs	110.01

Dimensions			
Lower part (LxW)	55 x 48 mm	Wingspan	200 mm
Length of grommet	50 mm	Number of entries	1x M20 or M25 conduit
Diameter of grommet	33 mm		

05



DRILLING TOOLS ACCESSORIES

BOHR-FIXX

Practical Hole Saw holder removes the drill core semi-automatically

Scan or click for further information



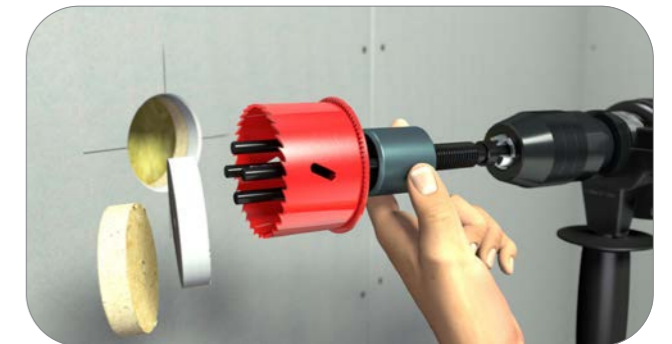
Benefits

- + Patented holder for Hole Saws from 38 mm
- + Easy exchange of the Hole Saw
- + Time and cost savings
- + Semi-automatic ejection function for pushing out the drill core

Installation instructions



Screw the Hole Saw on. If necessary, first insert the Edge Countersink (separately available). Patented holder for Hole Saws from 38 mm.



Hold the aluminium sleeve tight and eject the drill core by operating the drilling machine anticlockwise.

Designation	Article no.	PU	Price unit	Price in €
Bohr-Fixx Set	P794	1	1 pcs	150.85
Bohr-Fixx Set 74 mm	P794-74	1	1 pcs	150.85
Bohr-Fixx	P779	1	1 pcs	126.13

Accessories	Article no.	PU	Price unit	Price in €
Edge Countersink 68 mm	P779-02	1	1 pcs	12.75
Edge Countersink 74 mm	P779-03	1	1 pcs	13.35
Hole Saw 68 mm	P797	1	1 pcs	25.09
Hole Saw 74 mm	P797-74	1	1 pcs	25.96
Carbide Diamond Hole Saw 68 mm	P797HD	1	1 pcs	42.00
Carbide Diamond Hole Saw 74 mm	P797HD-74	1	1 pcs	45.50
Centering Drill for Bohr-Fixx	P831	1	1 pcs	3.47
Bohr-Fixx and Drilling Template Set	P857	1	1 pcs	406.93
Bohr-Fixx and Drilling Template Set 74 mm	P857-74	1	1 pcs	409.47

DRILLING TEMPLATE

For cavity wall

- + Installation aid for 68 mm cavity wall boxes
- + Time savings due to fast installation
- + Straight and precise drill holes
- + 5-fold combinations are possible



Scan or click
for further
information



Designation	Article no.	PU	Price unit	Price in €
Drilling Template for Cavity Wall Box with plastic bushing 68 mm	P102	1	1 pcs	67.25
Drilling Template for Cavity Wall Box with plastic bushing 74 mm	P102-74	1	1 pcs	71.75

DRILLING TEMPLATE

For flush-mounting

- + For exact drill holes in aerated concrete, brick, limestone block, full thermal protection and other brickwork
- + Time savings due to fast installation
- + Straight and precise drill holes
- + 5-fold combinations are possible



Scan or click
for further
information



Designation	Article no.	PU	Price unit	Price in €
Drilling Template flush-mounting Ø 82 mm	P718	1	1 pcs	190.90
Drilling Template flush-mounting Ø 82 mm 5-part	P718-05	1	1 pcs	226.56

LADDER SOCK

For extra work safety

- + Protects sensitive floors against scratching
- + Prevents the ladder from slipping away
- + Made of wear-resistant elastic material
- + Stretchable from 5.5 – 10 cm



Scan or click
for further
information



Designation	Article no.	PU	OC	Price unit	Price in €
PRIMO Ladder Sock Set	P153	4	400	1 Set	15.59

HIGH-SPEED DRILL

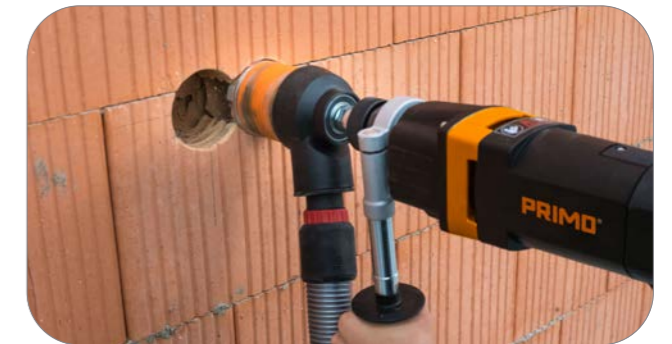
For drill holes in record time

Benefits

- + Tool holder for commercially available accessories
- + Durable, powerful motor
- + Metal gearbox for high stability
- + Mechanical safety coupling
- + Electronic soft start
- + Switchable soft hammer
- + **Holder for SDS Center Drill**



Scan or click
for further
information



Designation	Article no.	PU	Price unit	Price in €
PRIMO High-Speed Drill Set "Allround"	P936	1	1 pcs	937.51
Open-ended spanner	P854	1	1 pcs	9.07
Extraction	P855	1	1 pcs	100.35
Diamond Drill Bit soft Impact 74 mm	P859	1	1 pcs	118.43
Diamond Drill Bit soft Impact 82 mm	P851	1	1 pcs	124.30
Diamond Drill Bit 82 mm	P850	1	1 pcs	90.80
SDS Adapter M 16	P724	1	1 pcs	58.78
Centering Drill for SDS Adapter	P772	1	1 pcs	5.22

Scan or click
for further
information



NAILER

The nailing aid for fixing concrete boxes

Benefits

- + Spacing of locating pins 60 mm – suitable for every standard box cover
- + Magnet can be reordered
- + Length 40 cm: Nailing-on of covers and boxes
- + Can also be used without holder
- + Usable for M-Series, Concrete (Wing) Box 2.0, Universal Junction Box



Designation	Article no.	PU	Price unit	Price in €
Nailer for concrete construction products	P752	1	1 pcs	220.63
Accessories	Article no.	PU	Price unit	Price in €
Magnet for Nailer	P752M	1	1 pcs	16.52

BOX CUTTER

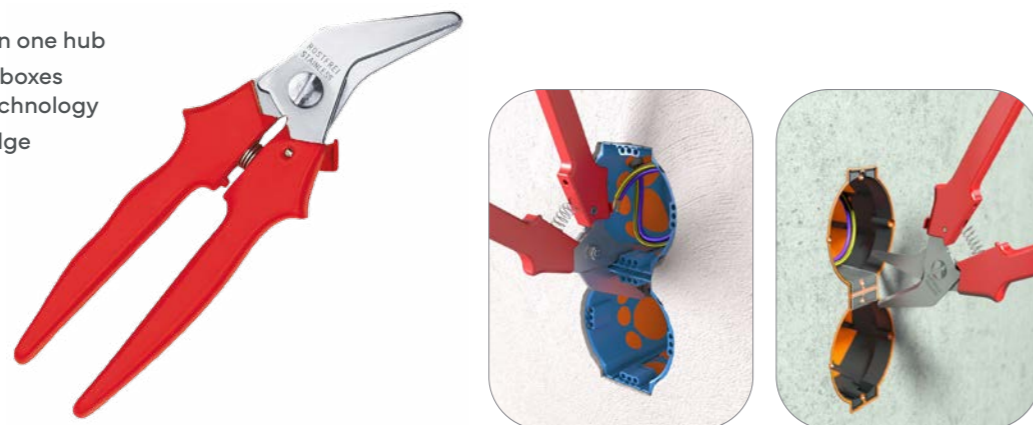
Remove SCS dividers

Scan or click
for further
information



Vorteile

- + Removes SCS dividers in one hub
- + Suitable for installation boxes with SCS connection technology
- + serrations on cutting edge



Designation	Article no.	PU	Price unit	Price in €
Box Cutter	P845	1	1 pcs	18.04

EZ 50 PULL LINE BLOWER

Stable cable network, clean conduits

Scan or click
for further
information



Benefits

- + For cable network installers in soil, road, tunnel and bridge construction
- + For conduits with Ø 25 to 150 mm
- + Pull line strength up to 300 kg
- + Blow-in or suction without compressor
- + Retooling in just a few seconds
- + Ejects water and dirt



Standard equipment in sturdy plastic case

- + 1 EZ 50 Pull Line Blower
- + 2 rolls of special line (Ø 1 mm, tensile strength approx. 24 kg, roll approx. 900 m)
- + 1 suction socket
- + 1 element set A: 2 joints ½" reduction 19/12 mm and nozzle with internal Ø 9.5 mm
- + 1 element set B: 3 joints ¾" and nozzle with internal Ø 16 mm as well as internal Ø 19 mm
- + 1 special nozzle, black, for internal conduit Ø from 25 to 50 mm
- + 1 plug-in nozzle with elbow 90°, external Ø 12 mm (only in connection with special nozzle, black)
- + 3 x 3 beads round Ø 11, 13 and 16 mm
- + 1 user manual

Designation	Article no.	PU	Price unit	Price in €
EZ 50 Pull Line Blower with accessories in case	P042	1	1 pcs	1,844.76
Special line small, tensile force 24 kg, 900 m	P043	1	1 pcs	22.44
EZ 100 Pull Line Blower with accessories in case	P068	1	1 pcs	3,804.36

Scan or click for further information

CONCRETE CONDUIT 750N



For effortless conduit installation

Benefits

- + Temperature-resistant from -5°C to +105°C
- + Flame-retardant and self-extinguishing
- + Internally coated
- + Flexible



VDE 0605 • DIN EN 61386-22 • Classification 33232

Minimum compressive strength 750N / 5 cm



Designation	Article no.	PU	OC	PL	Price unit	Preis €
Concrete Conduit M16 - 750N	P658	100	200	4,000	100 m	59.27
Concrete Conduit M20 - 750N	P589	100	200	2,800	100 m	87.70
Concrete Conduit M25 - 750N	P590	100	200	2,400	100 m	109.42
Concrete Conduit M32 - 750N	P591	50	100	1,400	100 m	183.98
Concrete Conduit M40 - 750N	P592	25	50	900	100 m	296.75
Concrete Conduit M50 - 750N	P593	25	50	600	100 m	393.02
Concrete Conduit M63 - 750N	P594	25	50	600	100 m	511.33

CONCRETE CONDUIT HALOGEN-FREE 750N

Scan or click for further information



Benefits

- + Temperature-resistant from -25°C to +105°C
- + Halogen-free – no dangerous toxic or corrosive gases
- + Flame-retardant and self-extinguishing
- + Internally coated
- + Flexible



VDE 0605 • DIN EN 61386-22 • Classification 33432

Minimum compressive strength 750N / 5 cm



Designation	Article no.	PU	OC	PL	Price unit	Preis €
Concrete Conduit halogen-free M20 - 750N	P577	100	200	2,800	100 m	195.19
Concrete Conduit halogen-free M25 - 750N	P578	100	200	2,400	100 m	248.37
Concrete Conduit halogen-free M32 - 750N	P579	50	100	1,400	100 m	381.98
Concrete Conduit halogen-free M40 - 750N	P580	25	50	900	100 m	485.72
Concrete Conduit halogen-free M50 - 750N	P581	25	50	600	100 m	627.46
Concrete Conduit halogen-free M63 - 750N	P582	25	50	600	100 m	942.87

CONDUIT 320N

Scan or click for further information



Lubricant inner coating for easy insertion

Benefits

- + Temperature-resistant from -15°C to +105°C
- + Non-flame-propagating
- + Flexible and corrosion-resistant
- + Lubricant inner coating for easy insertion
- + UV-stabilized



VDE 0605 • DIN EN 61386-22 • Classification 22332

Minimum compressive strength: 320 N/5 cm



Designation	Article no.	PU	OC	PL	Price unit	Preis €
Conduit M16 - 320N	P800	100	200	4,000	100 m	58.64
Conduit M20 - 320N	P575	100	200	2,800	100 m	66.11
Conduit M25 - 320N	P574	100	200	2,400	100 m	73.45
Conduit M32 - 320N	P801	50	100	1,400	100 m	131.78

LARGE CABLE DISPENSER

Scan or click for further information



No more tangled cables

Benefits

- + Suitable for cable drums or bundled goods
- + No tangled cables
- + Easily unwind damaged cable reels
- + Suitable for all reel diameters
- + Usable up to 380 kg
- + With dynamic unwind brake



Designation	Article no.	PU	Price unit	Price in €
Large Conduit Dispenser	P017	1	1 pcs	267.77

LIST OF KEYWORDS

A

Adhesive Disc..... 24, 26, 44

B

Bohr-Fixx.....79
Bohr-Fixx and Drilling Template Set 74 mm 8, 12, 16, 18, 79
Bohr-Fixx and Drilling Template Set79
Bohr-Fixx Set 74 mm 8, 12, 16, 18, 79
Bohr-Fixx Set.....79
Box Cutter.....82

C

Cable Holder incl. Adhesive Disc24
Carbide Diamond Hole Saw 68 mm.....79
Carbide Diamond Hole Saw 74 mm..... 8, 12, 16, 18, 79
Centering Drill for Bohr-Fixx.....79
Centering Drill for SDS Adapter 81
Concrete Box 2.0 60
Concrete Conduit halogen-free M20 - 750N.....84
Concrete Conduit halogen-free M25 - 750N84
Concrete Conduit halogen-free M32 - 750N84
Concrete Conduit halogen-free M40 - 750N84
Concrete Conduit halogen-free M50 - 750N.....84
Concrete Conduit halogen-free M63 - 750N.....84
Concrete Conduit M16 - 750N84
Concrete Conduit M20 - 750N84
Concrete Conduit M25 - 750N.....84
Concrete Conduit M32 - 750N.....84
Concrete Conduit M40 - 750N84
Concrete Conduit M50 - 750N84
Concrete Conduit M63 - 750N84
Concrete Wing Box 2.0..... 61
Conduit M16 - 320N85
Conduit M20 - 320N85
Conduit M25 - 320N85
Conduit M32 - 320N85

D

Diamond Drill Bit 82 mm 81
Diamond Drill Bit soft Impact 74 mm68, 69, 81
Diamond Drill Bit soft Impact 82 mm..... 81
Divider web for Universal Junction Box U60/U7058
Drill Cover 26, 44
Drill Cover for Ø 60 mm 30, 36, 41
Drilling Template flush-mounting 82 mm 30, 36, 80
Drilling Template flush-mounting 82 mm 5-part 30, 36, 80
Drilling Template for Cavity wall box 68 mm24, 80
Drilling Template for Cavity wall box 74 mm8, 12, 16, 18, 80

E

Edge Countersink 68 mm79
Edge Countersink 74 mm 8, 12, 16, 18, 79
End and Transition Grommet C20.....75
End and Transition Grommet C25.....75
End and Transition Grommet C32.....75
End and Transition Grommet C4075
End and Transition Grommet M20/M2577
End and Transition Grommet M20/M25 with wings77
Equipment Carrier GET-80..... 30, 36, 43, 50
Extraction..... 81
EZ 100 Pull Line Blower with accessories in case..... 83
EZ 50 Pull Line Blower with accessories in case 83

F

Formwork Protector Quickstar76

G

Grip Type Coupler C2075
Grip Type Coupler C25.....75
Grip Type Coupler C32.....75
Grip Type Coupler C40.....75

H

Hole Saw 68 mm 9
Hole Saw 74 mm 8, 12, 16, 18, 79

K

KliQ-Fixx Cavity Wall Device V-Box 62 mm..... 8
KliQ-Fixx CWB-Set-18

L

Ladder Sock Set.....80
Large Conduit Dispenser85

M

Magnet for Nailer82
Membrane Box M1 35 (with 35 mm luminaire outlet)..... 50
Membrane Box M1 60..... 50
Membrane Box M1 CEE.....54
Membrane Box M2 35 (with 35 mm luminaire outlet)..... 50
Membrane Box M2 60..... 50
Membrane Box M3 35 (with 35 mm luminaire outlet)..... 50
Membrane Box M3 60..... 50
Multi Box..... 26, 44

N

Nailer for concrete construction products..... 50, 58, 60, 61, 82

O

Open-ended spanner..... 81

P

Pistol for PRIMO Thermo Foam 30, 36
PRIMO Clip.....45
PRIMO High-Speed Drill Set „Allround“ 81
Push-on Frame for Membrane Box M1..... 50
Leveling Ring 8 mm for Ø 60 mm 30, 36, 41
Leveling Ring 12 mm for Ø 60 mm 30, 36, 41
Leveling Ring 24 mm for Ø 60 mm..... 30, 36, 41

Q

Qnect Cavity Wall Device Box 49 mm.....12
Qnect Cavity Wall Device V-Box 62 mm12
Qnect Cavity Wall Soundproof Box 49 mm..... 16
Qnect Cavity Wall Soundproof Box 62 mm..... 16
Qnect HWD-Set-1.....12

S

SDS Adapter M 16..... 81
Signal Pin..... 26, 44
Special line small, tensile force 24 kg, 900 m 83

T

Thermo Box TED-70 30
Thermo Box THD-45 30
Thermo Box THD-70 30
Thermo Box THD-70 PLUS..... 36
Thermo Foam 750 ml..... 30, 36
Thermo Foam Eco 30, 36
Transition sleeve M20/M25 transparent-red 75

U

UniQ Cavity Wall Device V-Box 18
Universal Junction Box for concrete (without membrane).....58
Universal Junction Box U60 3-part.....58
Universal Junction Box U70 3-part58
Universal Plaster Cover UP 30, 36, 40

W

Wall and Ceiling Transition 30° M32/M40 77
Wall and Ceiling Transition 30° M32/M40 with wings 77
Wall and Ceiling Transition C20.....74
Wall and Ceiling Transition C25.....74
Wall and Ceiling Transition C32.....74
Wall and Ceiling Transition M20/M2577
ETICS-Device Box.....42
ETICS-Device Carrier 160 x 140 mm.....42
Wings for concrete range 50, 58, 70, 74

X

XL 150 Extension Ring70
XL 150 Front Part - 100 mm70
XL 150 Front Part - 68 mm70
XL 150 Front Part - 75 mm70
XL 150 Front Part - 80 mm70
XL 150 Front Part - 85 mm.....70
XL 150 Front Part - 90 mm70
XL 150 Front Part - 95 mm70
XL 150 Front Part - Square 68 mm70
XL 150 Front Part - Square 75 mm.....70
XL 150 Front Part with mineral fibre board70
XL 150 Installation Housing 64, 68
XL 150 Uni-Flexx..... 68, 70
XL 150/200/250 Tunnel..... 68, 70
XL 200 Extension Ring.....70
XL 200 Front Part - 100 mm.....70
XL 200 Front Part - 110 mm70
XL 200 Front Part - 125 mm70
XL 200 Front Part - 145 mm.....70
XL 200 Front Part - 160 mm70
XL 200 Front Part - 165 mm.....70
XL 200 Front Part - 180 mm70
XL 200 Front Part with mineral fibre board70
XL 200 Installation Housing 64
XL 250 Front Part with mineral fibre board70
XL 250 Installation Housing 64

LIST OF ARTICLE NUMBERS

P001.....	24, 25	P717.....	30, 36	P870.....	64, 68, 69, 71
P002.....	26, 27, 44	P717-ECO.....	30, 36	P871.....	64
P003.....	26, 27, 44	P718.....	30, 32, 36, 37, 80	P872.....	64
P004.....	26, 44	P718-05.....	30, 36, 80	P873.....	65, 66, 68, 70, 71
P005.....	24, 25, 26, 27, 44	P719.....	30, 32, 34, 37	P874.....	70
P017.....	85	P722.....	30, 33, 35, 36, 40	P875.....	70
P042.....	83	P724.....	81	P876.....	70
P043.....	83	P726.....	30, 31	P877.....	70
P068.....	83	P727.....	31, 36	P878.....	70
P076.....	45	P730.....	61	P879.....	70
P102.....	24, 80	P731.....	60	P880.....	70
P102-74.....	8, 10, 12, 15, 16, 18, 20, 80	P752.....	50, 51, 58, 60, 61, 65, 82	P881.....	70
P153.....	80	P752M.....	82	P883.....	70
P200-01.....	12, 13	P753.....	77	P884.....	70
P200-02.....	16	P754.....	77	P885.....	70
P201-01.....	12, 13	P755.....	77	P886.....	70
P201-01-S.....	12	P756.....	77	P887.....	70
P201-02.....	16	P760.....	50	P888.....	70
P270-01.....	18, 19	P761.....	50, 52, 55, 58, 67, 70, 74	P889.....	70
P295.....	8, 9	P762.....	50, 51	P890.....	70
P295S.....	8	P763.....	50	P891.....	70
P400.....	42	P772.....	81	P892.....	70
P401.....	42	P773.....	30, 36, 43, 50	P903.....	70
P419.....	77	P774.....	30, 31	P906.....	70, 71
P421.....	58	P775.....	30, 31	P907.....	70, 71
P421-60-3.....	58	P779.....	10, 14, 20, 79	P912.....	50
P421-70-3.....	58	P779-02.....	79	P913.....	50
P421-T.....	58, 59	P779-03.....	8, 12, 16, 18, 79	P914.....	50
P574.....	85	P794.....	79	P915.....	50
P575.....	85	P794-74.....	8, 12, 16, 18, 79	P936.....	32, 69, 81
P577.....	84	P797.....	33, 35, 41, 79	P948.....	68, 69, 70, 71
P578.....	84	P797-74.....	8, 12, 14, 16, 18, 20, 79	P953.....	54
P579.....	84	P797HD.....	79	P955-20.....	75
P580.....	84	P797HD-74.....	8, 12, 16, 18, 69, 79	P955-20-NK.....	75
P581.....	84	P800.....	85	P955-25.....	75
P582.....	84	P801.....	85	P955-25-NK.....	75
P589.....	84	P831.....	79	P955-32.....	75
P590.....	84	P833.....	75	P955-32-NK.....	75
P591.....	84	P845.....	53, 82	P955-40.....	75
P592.....	84	P850.....	81	P955-40-NK.....	75
P593.....	84	P851.....	68, 69, 81	P956-20-NK.....	74
P594.....	84	P854.....	81	P956-25-NK.....	74
P658.....	84	P855.....	81	P956-32-NK.....	74
P680.....	30, 36, 41	P857.....	79		
P681.....	30, 36, 41	P857-74.....	8, 12, 16, 18, 79		
P682.....	30, 36, 41	P858.....	76		
P683.....	30, 36, 41	P859.....	68, 81		

OUR GENERAL TERMS AND CONDITIONS

Delivery

Free delivery throughout Germany, excluding islands, from a net goods value of € 500. Shipping on enquiry in case of net goods values of less than € 500 and shipping to foreign countries. Deliveries to tradespersons and contractors only.

Goods returns

An exchange or a return shall only come about if the customer bears the associated transport costs and agrees in the case of a return to a handling fee of 20% of the net invoice amount.

Business hours

Telephone orders Mon – Thu from 8.00 – 17.00,
Fri from 8.00 – 15.00

For orders:

bestellung@primo-gmbh.com

For complaints:

kundenservice@primo-gmbh.com

For tenders:

ausschreibung@primo-gmbh.com

General enquiries:

info@primo-gmbh.com

Terms of payment, Germany

Invoices shall be settled within 14 days without deduction unless other terms of payment have been agreed.

Prices

The gross prices stated are non-binding recommended prices excl. VAT. Subject to intermediate sale. On publication of this edition, all previous editions of our price lists cease to be valid.

Current price changes and news online: www.primo-gmbh.com

Subject to changes in the product range, technical changes, errors and delivery options.

Retention of title

PRIMO GmbH has the right to retention of title and extended retention of title for all goods, including previously delivered goods, until full payment has been made of all receivables.

Place of jurisdiction

The place of jurisdiction for the goods delivered by us is Mühldorf am Inn.

The General Terms and Conditions printed in full at www.primo-gmbh.com are deemed to be agreed.

Imprint

PRIMO GmbH
Wernher-von-Braun-Str. 2

84544 Aschau am Inn

Tel. : +49 8638 / 88 55 92 00
Fax : +49 8638 / 88 55 92 99

E-Mail: info@primo-gmbh.com
www.primo-gmbh.com

Handelsregister Traunstein
HRB 16388
USt-Id-Nr. DE 814 418 088

Delivery address PRIMO GmbH:

Wernher-von-Braun-Str. 2
84544 Aschau am Inn
Germany

...BECAUSE YOUR
TIME IS VALUABLE.

PRIMO®

PRIMO GmbH | www.primo-gmbh.com | Wernher-von-Braun-Str. 2 | 84544 Aschau
Phone +49 8638 88559-200 | Fax +49 8638 88559-299 | info@primo-gmbh.com

DATED 02/2026 | Subject to changes | The gross prices stated are non-binding recommended prices excl. VAT and are only valid in Germany. On publication of this edition, all previous editions cease to be valid.

