

xClear Protection Devices

Clearly Reliable - Clearly Safe - Clearly Affordable



Powering Business Worldwide

We make what matters work.*



* At Eaton, we believe that power is a fundamental part of just about everything people do. That's why we're dedicated to helping our customers find new ways to manage electrical, hydraulic and mechanical power more efficiently, safely and sustainably. To improve people's lives, the communities where we live and work, and the planet our future generations depend upon. Because this is what really matters. And we're here to make sure it works.

To learn more go to: [Eaton.com/whatmatters](https://www.eaton.com/whatmatters)



We make what matters work.

Content overview

1.0 - Miniature Circuit Breakers CLM6	4
2.0 - Residual Current Circuit Breaker CLC6	9



Description

- Miniature circuit breakers for commercial and residential applications
- Rated currents up to 63 A
- Tripping characteristics B, C
- Rated breaking capacity 6 kA according to IEC/EN 60898-1



Rated current I_n (A)	Type Designation	Article No.	Units per package
6kA, Characteristic B			
1-pole			
6	CLM6-B6/1	EP-504677	12
10	CLM6-B10/1	EP-504642	12
16	CLM6-B16/1	EP-504647	12
20	CLM6-B20/1	EP-504652	12
25	CLM6-B25/1	EP-504657	12
32	CLM6-B32/1	EP-504662	12
40	CLM6-B40/1	EP-504667	12
50	CLM6-B50/1	EP-504672	12
63	CLM6-B63/1	EP-504682	12
1+N-pole			
6	CLM6-B6/1N	EP-504678	6
10	CLM6-B10/1N	EP-504643	6
16	CLM6-B16/1N	EP-504648	6
20	CLM6-B20/1N	EP-504653	6
25	CLM6-B25/1N	EP-504658	6
32	CLM6-B32/1N	EP-504663	6
40	CLM6-B40/1N	EP-504668	6
50	CLM6-B50/1N	EP-504673	6
63	CLM6-B63/1N	EP-504683	6
2-pole			
6	CLM6-B6/2	EP-504679	6
10	CLM6-B10/2	EP-504644	6
16	CLM6-B16/2	EP-504649	6
20	CLM6-B20/2	EP-504654	6
25	CLM6-B25/2	EP-504659	6
32	CLM6-B32/2	EP-504664	6
40	CLM6-B40/2	EP-504669	6
50	CLM6-B50/2	EP-504674	6
63	CLM6-B63/2	EP-504684	6
3-pole			
6	CLM6-B6/3	EP-504680	4
10	CLM6-B10/3	EP-504645	4
16	CLM6-B16/3	EP-504650	4
20	CLM6-B20/3	EP-504655	4
25	CLM6-B25/3	EP-504660	4
32	CLM6-B32/3	EP-504665	4
40	CLM6-B40/3	EP-504670	4
50	CLM6-B50/3	EP-504675	4
63	CLM6-B63/3	EP-504685	4
3+N-pole			
6	CLM6-B6/3N	EP-504681	3
10	CLM6-B10/3N	EP-504646	3
16	CLM6-B16/3N	EP-504651	3
20	CLM6-B20/3N	EP-504656	3
25	CLM6-B25/3N	EP-504661	3
32	CLM6-B32/3N	EP-504666	3
40	CLM6-B40/3N	EP-504671	3
50	CLM6-B50/3N	EP-504676	3
63	CLM6-B63/3N	EP-504686	3



Rated current I_n (A)	Type Designation	Article No.	Units per package
6kA, Characteristic C			
1-pole			
6	CLM6-C6/1	EP-504722	12
10	CLM6-C10/1	EP-504687	12
16	CLM6-C16/1	EP-504692	12
20	CLM6-C20/1	EP-504697	12
25	CLM6-C25/1	EP-504702	12
32	CLM6-C32/1	EP-504707	12
40	CLM6-C40/1	EP-504712	12
50	CLM6-C50/1	EP-504717	12
63	CLM6-C63/1	EP-504727	12



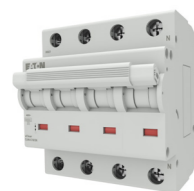
1+N-pole			
6	CLM6-C6/1N	EP-504723	6
10	CLM6-C10/1N	EP-504688	6
16	CLM6-C16/1N	EP-504693	6
20	CLM6-C20/1N	EP-504698	6
25	CLM6-C25/1N	EP-504703	6
32	CLM6-C32/1N	EP-504708	6
40	CLM6-C40/1N	EP-504713	6
50	CLM6-C50/1N	EP-504718	6
63	CLM6-C63/1N	EP-504728	6



2-pole			
6	CLM6-C6/2	EP-504724	6
10	CLM6-C10/2	EP-504689	6
16	CLM6-C16/2	EP-504694	6
20	CLM6-C20/2	EP-504699	6
25	CLM6-C25/2	EP-504704	6
32	CLM6-C32/2	EP-504709	6
40	CLM6-C40/2	EP-504714	6
50	CLM6-C50/2	EP-504719	6
63	CLM6-C63/2	EP-504729	6



3-pole			
6	CLM6-C6/3	EP-504725	4
10	CLM6-C10/3	EP-504690	4
16	CLM6-C16/3	EP-504695	4
20	CLM6-C20/3	EP-504700	4
25	CLM6-C25/3	EP-504705	4
32	CLM6-C32/3	EP-504710	4
40	CLM6-C40/3	EP-504715	4
50	CLM6-C50/3	EP-504720	4
63	CLM6-C63/3	EP-504730	4



3+N-pole			
6	CLM6-C6/3N	EP-504726	3
10	CLM6-C10/3N	EP-504691	3
16	CLM6-C16/3N	EP-504696	3
20	CLM6-C20/3N	EP-504701	3
25	CLM6-C25/3N	EP-504706	3
32	CLM6-C32/3N	EP-504711	3
40	CLM6-C40/3N	EP-504716	3
50	CLM6-C50/3N	EP-504721	3
63	CLM6-C63/3N	EP-504731	3

Specifications | Miniature Circuit Breakers CLM6

Technical Data

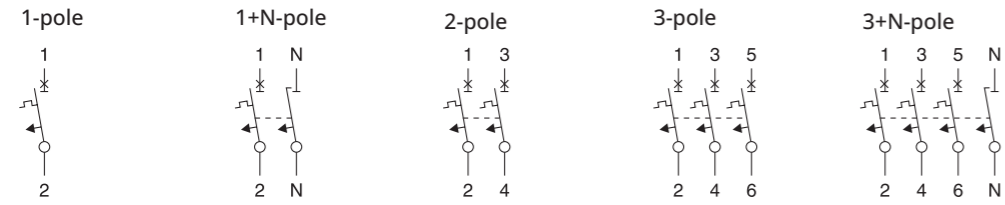
Electrical

Design according to		IEC/EN 60898-1
Current test marks as printed onto the device		
Rated voltage	U_n	AC: 230/400 V
Rated frequency		50/60 Hz
Rated breaking capacity according to IEC/EN 60898-1	I_{cn}	6 kA
Characteristic		B, C
Rated insulation voltage	U_i	440V
Selectivity class		3
Rated impulse withstand voltage	U_{imp}	4 kV (1.2/50 μ s)
Endurance		
electrical components		10,000 switching operations
mechanical components		20,000 switching operations
Line voltage connection		at will (above/below)

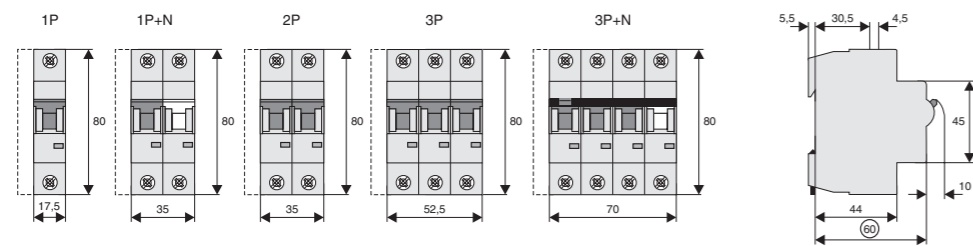
Mechanical

Frame size		45 mm
Device height		80 mm
Device width		17.8 mm per pole (1MU)
Mounting		quick fastening on DIN rail IEC/EN 60715
Degree of protection		IP20
Upper and lower terminals		open mouthed/lift terminals
Terminal protection		finger and hand touch safe
Terminal capacity		1-25 mm ²
Terminal torque		2-2.4 Nm
Mounting		independent of position
Climatic conditions		Acc. to IEC 68-2 (25...55°C / 90...95% RH)
Operating temperature		-15°C to +65°C

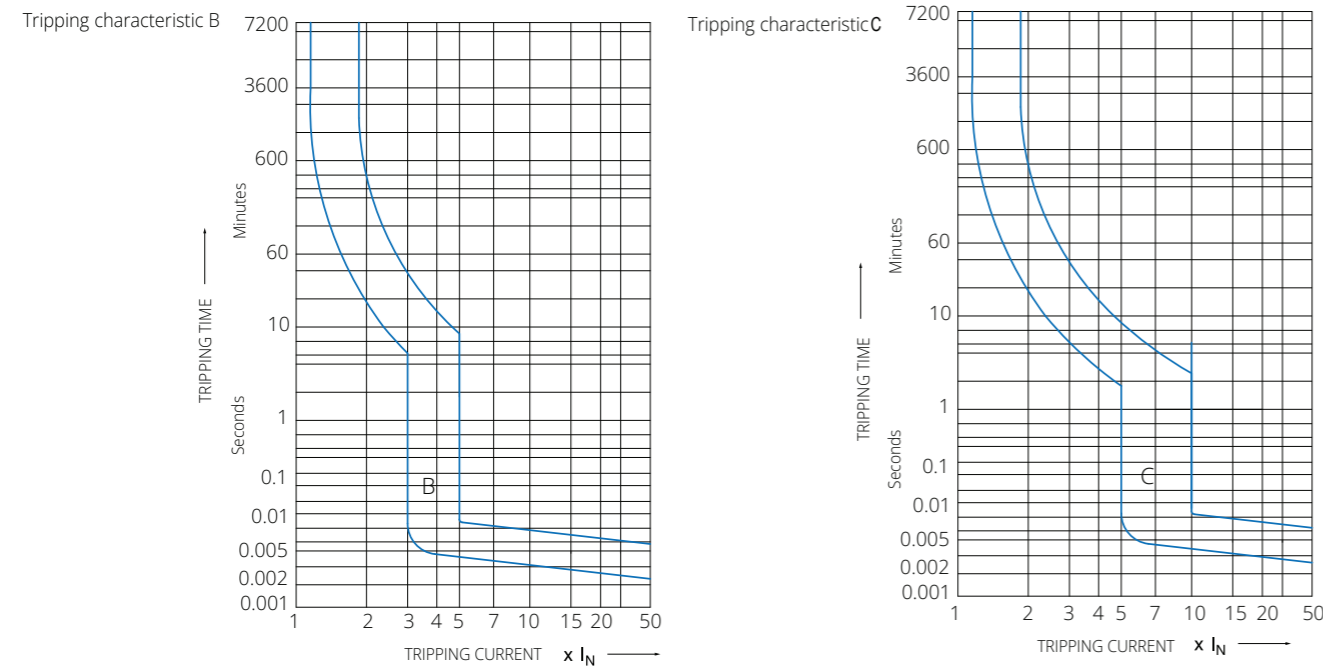
Connection diagrams



Dimensions (mm)



Tripping Characteristics (IEC/EN 60898-1)



Residual current circuit breaker CLC6



Residual current circuit breaker CLC6

Description

- A compact range of residual current devices for a wide range of applications
- For fault current/residual current protection
- Selection of nominal current: 25, 40, 63 A
- Real contact position indicator


Conditional surge current protection to 250A, Type AC , Instantaneous protection



$I_n/I_{\Delta n}(A)$	Type Designation	Article No.	Units per package
2-pole			
25/0.03	CLC6-25/2/003	EP-504757	1
40/0.03	CLC6-40/2/003	EP-504761	1
63/0.03	CLC6-63/2/003	EP-504765	1



$I_n/I_{\Delta n}(A)$	Type Designation	Article No.	Units per package
4-pole			
25/0.03	CLC6-25/4/003	EP-504759	1
40/0.03	CLC6-40/4/003	EP-504763	1
63/0.03	CLC6-63/4/003	EP-504767	1

Conditional surge current-proof 250A, sensitive to residual pulsating DC, Type A , instantaneous



$I_n/I_{\Delta n}(A)$	Type Designation	Article No.	Units per package
2-pole			
25/0.03	CLC6-25/2/003-A	EP-504758	1
40/0.03	CLC6-40/2/003-A	EP-504762	1
63/0.03	CLC6-63/2/003-A	EP-504766	1

Conditional surge current-proof 250A, sensitive to residual pulsating DC, Type A , instantaneous



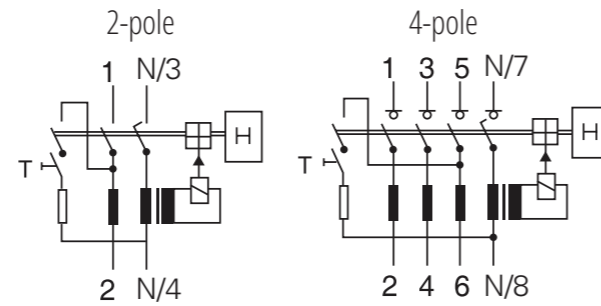
$I_n/I_{\Delta n}(A)$	Type Designation	Article No.	Units per package
4-pole			
25/0.03	CLC6-25/4/003-A	EP-504760	1
40/0.03	CLC6-40/4/003-A	EP-504764	1
63/0.03	CLC6-63/4/003-A	EP-504768	1

Residual Current Circuit Breaker CLC6

- Residual Current Circuit Breakers
- Compatible with and suitable for standard busbar connection
- Busbar positioning optionally above or below
- Universal tripping signal switch, also suitable for MCB, RCBO, ... can be mounted subsequently
- Contact position indicator red - green
- The device functions irrespective of the position of installation
- Tripping is line voltage-independent. Consequently, the RCD is suitable for "fault current/residual current protection".
- Mains connection at either side
- The 4-pole device can also be used for 2- or 3-pole connection.
- The test key "T" must be pressed every 6 month. The system operator must be informed of this obligation and his responsibility in a way that can be proven (self-adhesive RCD-label enclosed). The test interval of 6 month is valid for residential and similar applications. Under all other conditions (e.g. damply or dusty environments), it's recommended to test in shorter intervals (e.g. monthly).
- Pressing the test key "T" serves the only purpose of function testing the residual current device (RCD). This test does not make earthing resistance measurement (RE), or proper checking of the earth conductor condition redundant, which must be performed separately.

- **A type:** to protect against unsmoothed pulsating DC residual current in special forms;
- **AC type:** protect against AC residual current;

Connection diagram

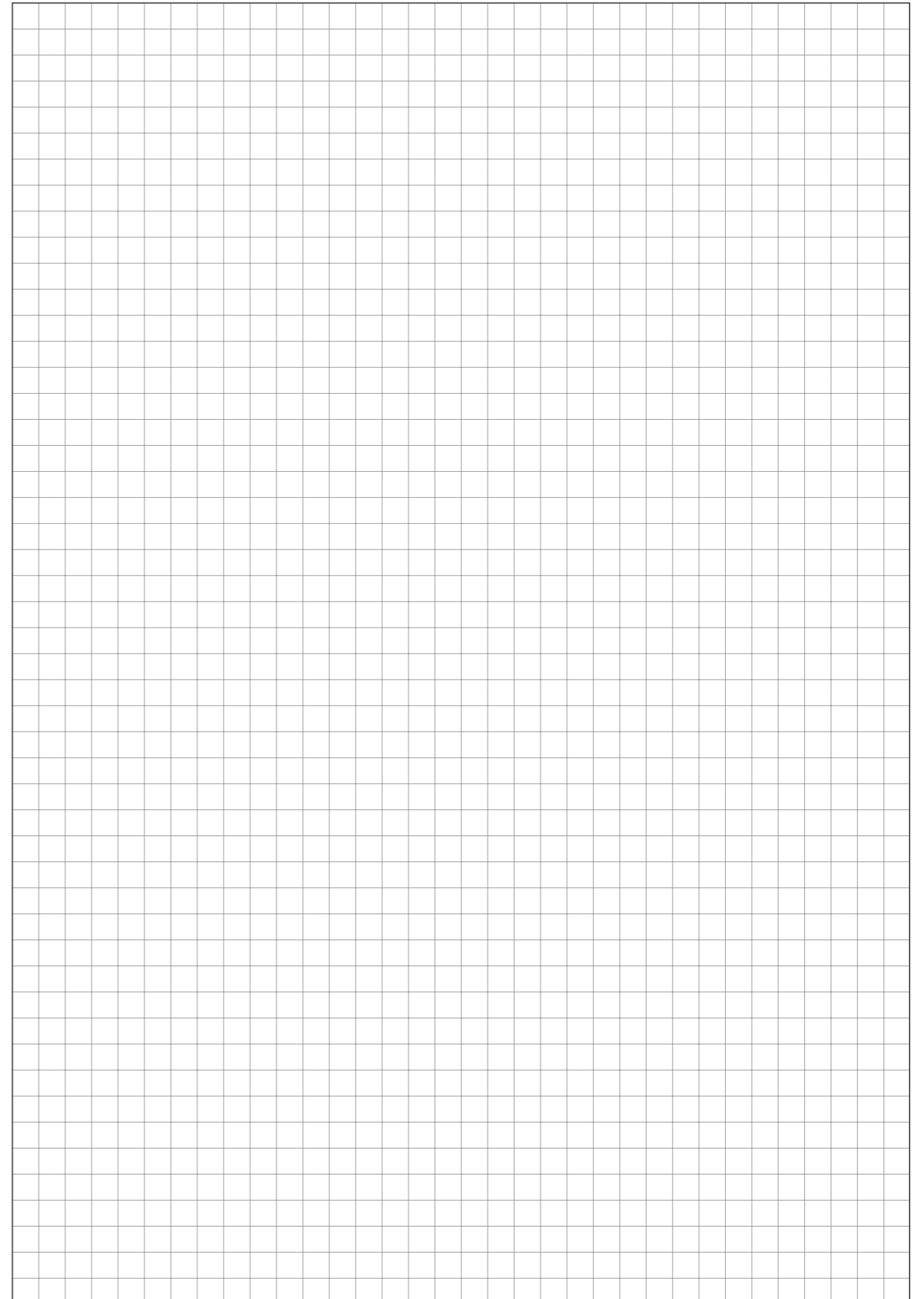
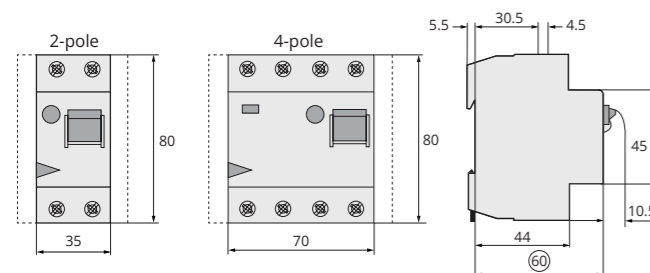


Technical data

Electrical	
Design according to	IEC/EN 61008
Tripping	Instantaneous
Rated voltage Un	230/400 V, 50/60 Hz
Rated tripping current IΔn	30 mA
Sensitivity	AC, pulse DC
Rated short-circuit strength Icn	6 kA
Max. backup fuse	Short circuit protection
I _n = 25-63 A	63 A gG/gL
Rated breaking capacity Im or rated fault breaking capacity I _{Δm}	
I _n = 25-40 A	500 A
I _n = 63 A	630 A

Voltage range of test button	2 - pole	196 - 264 V-
	4 - pole	196 - 264 V-
Electrical life	≥4,000 operating cycles	
Mechanical life	≥10,000 operating cycles	
Mechanical		
Mounting	IEC standard DIN rail 35 mm width	
Housing protection degree	IP20	
Upper and lower terminals	Open mouthed/lift terminals	
Terminal protection	Finger touch and hand touch safe	
Terminal capacity	1.5 - 35 mm ² single wire 2 × 16 mm ² multi wire	
Busbar thickness	0.8 - 2 mm	
Operating temperature	-15 °C to 55 °C	
Resistance to climatic conditions	According to IEC/EN 61008	

Dimensions (mm)



Eaton's electrical business is a global leader with deep regional application expertise in power distribution and circuit protection; power quality, backup power and energy storage; control and automation; life safety and security; structural solutions; and harsh and hazardous environment solutions. Through end-to-end services, channel and an integrated digital platform & insights Eaton is powering what matters across industries and around the world, helping customers solve their most critical electrical power management challenges.

For more information, visit **Eaton.com**.



Eaton Industries (Austria) GmbH
Scheydgasse 42
1210 Vienna
Austria

Eaton
EMEA Headquarters
Route de la Longeraie 7
1110 Morges, Switzerland

© 2025 Eaton
All Rights Reserved
Publication No. CA011010EN
June 2025

The products, information and prices contained in this document are subject to change. The same is true for any errors or omissions. Only the order confirmation and the technical documentation received from Eaton are binding. Photos and illustrations are indicative only and do not serve as proof of any appearance or functionality. Their use in any form must be approved in advance by Eaton. The same applies for brand names (in particular Eaton, Moeller, Cutler-Hammer, Cooper and Bussmann). Eaton's terms of sale, as published on Eaton's websites and included with order confirmations received from Eaton, apply.

Eaton is a registered trademark.

All other trademarks are property of their respective owners.

Follow us on social media to get the latest product and support information.

