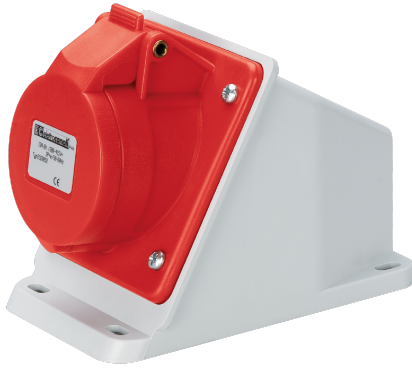


EC690581



**WALL-MOUNT INCLINED BOX SOCKET
IP44 380V 3P+N+E 32A**

Industrial > Plugs and sockets > Panel and wall-mount > Panel sockets > Cee socket outlet (iec 60309) > Ip44 - 32 a - base angle 20°



Technical Symbols/Marks/Approvals



Norms

EN 60309-1 EN 60309-2

Etim

GROUP EG000014 - Industrial sockets/plug applications

CLASS EC001321 - CEE socket outlet (IEC 60309)

| | | | | | |
|------------------------------|-------------------|--|-------------------------|----------------------------|--------------|
| Number of poles | 5 | Degree of protection (IP) | IP44 | Material | Plastic |
| Type of fastening | External mounting | Model | Surface mounted | RAL-number | 7035 |
| Housing colour | Grey | Lockable | No | Insulated mounting | Yes |
| IEC-amperage | 32 A | Voltage according to EN 60309-2 | 400 V (50+60 Hz) red | Clock hour position | 6 h |
| Identification colour | Red | Connection system | Screwed terminal | Cable entry | Preembossing |
| Contact material | CuZn | Surface coating contacts | Untreated | Military model | No |
| Text field | No | | | | |

Barcode



8032793877851

Unit

1 NR

0.25 [kg]



8059307215886

Cardboard

12 NR

0.39x0.295x0.15 [m]

3 [kg]