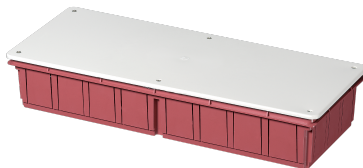


EC350C8

**FLUSH MOUNTING JUNCTION BOX
WITH LID DIM. 392X152X70**



Enclosures > Recessed > Recessed junction boxes > Series 350 - masonry > Flush mount junction boxes > Orange boxes



Technical Symbols/Marks/Approvals



Norms

EN 60670-1 EN 60670-22

Etim

GROUP EG000048 - Connection material (electrotechnical)

CLASS EC002601 - Box/housing for built-in mounting in the wall/ceiling

Max. conductor cross section	0	Mounting method	Flush-mounted	Degree of protection (IP)	IP40
Material	Plastic	Halogen free	Yes	Surface protection	Untreated
Colour	Orange	Width	392 mm	Model	Other
Length	152 mm	Diameter	0 mm	Cover model	Blind cover
Inner depth	69 mm	Circuit integrity	None	Equipped with	None
Shape	Rectangular	Number of inlets	34	Inlet from the rear	Yes
Compliant with BS 4662	No	Couplable	No	Transparent cover	No
Pipe locking	No	Construction type	Cable junction box	Airtight	No
For tube diameter	Other	Cover attachment	Screwed	Sealable	No
With screening	No	Provided with revolving ring	No	Depth	0-69 mm
For number of device inserts	0	Mounting switching equipment	Screwing	With screws	Yes
Housing feed-through by break-out opening	Yes	Housing feed-through by seal membrane	No	Housing feed-through by nozzle	No
Housing feed-through by step membrane	No	Pipe locking optional	No	Number of included spouts	0
Number of poles of the clamp	0	Clamp position fixed	No	Luminaire hook mounting	No
Nozzle	None	Special application	None	With partition panel	No

Technical Characteristics

Preparation for compartments/DIN rails 4 / -

Documentation available for download



Barcode



8032636760678

Unit

1 NR

0.185x0.075x0.425 [m]

0.525 [kg]



8057711599592

Cardboard

20 NR

0.405x0.605x0.55 [m]

10.5 [kg]