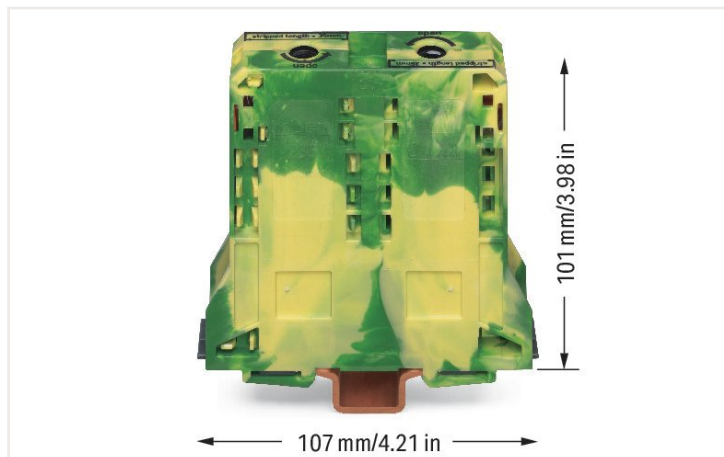


Информационен лист | Номер на артикул: 285-197

2-проводна клема със заземяване; 95 mm²; слотове за странични марк. табелки; само за DIN 35 x 15 шина; 2,3 mm дебелина; мед; POWER CAGE CLAMP; 95,00 mm²; зелен-жълто

<https://www.wago.com/285-197>



Цвят: ■ зелен-жълто

Electrical data

Ratings per IEC/EN

Ratings per IEC/EN 60947-7-2

Connection data

Total number of connection points	2
Total number of potentials	1
Number of levels	1

Connection 1

Connection technology	POWER CAGE CLAMP
Actuation type	Operating tool
Connectable conductor materials	Copper
Solid conductor	25 ... 95 mm ² / 4 ... 4/0 AWG
Stranded conductor	25 ... 95 mm ² / 4 ... 4/0 AWG
Fine-stranded conductor	25 ... 95 mm ² / 4 ... 4/0 AWG
Fine-stranded conductor; with insulated ferrule	25 ... 95 mm ² / 4 ... 4/0 AWG
Fine-stranded conductor; with uninsulated ferrule	25 ... 95 mm ² / 4 ... 4/0 AWG
Strip length	35 mm / 1.38 inch
Wiring direction	Side-entry wiring

Physical data

Width	25 mm / 0.984 inch
Height	107 mm / 4.213 inch
Depth from upper-edge of DIN-rail	101 mm / 3.976 inch

Mechanical data

Design	horizontal type
Mounting type	DIN-35 rail
Mounting (note)	only suitable for DIN 35 x 15 copper rail; 2.3 mm thick
Marking level	Side marking

Material data

Note (material data)	Information on material data can be found here
Color	зелен-жълто
Insulation material	Polyamide (PA66)
Flammability class per UL94	V0
Fire load	3.438 MJ
Weight	309.3 g

Commercial data

Product Group	1 (Rail Mounted Terminal Blocks)
eCl@ss 10.0	27-14-11-41
eCl@ss 9.0	27-14-11-41
ETIM 7.0	EC000901
ETIM 6.0	EC000901
PU (SPU)	5 Stück
Packaging type	Box
Country of origin VKOrg Germany	PL
GTIN	4045454204372
Customs tariff number VKOrg Germany	85369010000

Одобрения / Сертификати

Ex-Approvals



Одобрение	Допълнителен текст за одобрение	Име на сертификат
AEx Underwriters Laboratories Inc.	-	E185892 (AEx eb II C resp. Ex eb II C)

Сертификати, специфични за всяка държава



Одобрение	Допълнителен текст за одобрение	Име на сертификат
CCA DEKRA Certification B.V.	EN 60947	NTR NL-7707
CSA DEKRA Certification B.V.	C22.2 No. 158	154112
KEMA/KEUR DEKRA Certification B.V.	EN 60947	71-101911

Сертификати за кораби



Одобрение	Допълнителен текст за одобрение	Име на сертификат
ABS American Bureau of Shipping	EN 60947	20-HG1941090-PDA
BV Bureau Veritas S.A.	EN 60947	07436/F0 BV
DNV GL Det Norske Veritas, Germanischer Lloyd	-	TAE00001V2

Сертификати за кораби

LR Lloyds Register	EN 60947	91/20112 (E9)
-----------------------	----------	---------------

UL-Approvals



Одобрение	Допълнителен текст за одобрение	Име на сертификат
UL Underwriters Laboratories Inc.	UL 1059	E45172

Изтегляния

Documentation

Additional Information

Technical Section	pdf 2142.18 KB	↓
-------------------	-------------------	-------------------

Bid Text

285-197	19.02.2019	xml 3.10 KB	↓
285-197	04.01.2018	doc 23.50 KB	↓

CAD/CAE-Data

CAD data

2D/3D Models 285-197	↓
----------------------	-------------------

CAE data

EPLAN Data Portal 285-197	↓
WSCAD Universe 285-197	↓
ZUKEN Portal 285-197	↓

1 Съвместими продукти

1.1 Допълнителни аксесоари

1.1.1 Cover

1.1.1.1 Cover



Артикул номер: 285-169

Предпазител за пръсти; капак със защита срещу допир предпазва неизползаните входове за проводниците и слотовете за джъмперите; за силнотокви клечи 95 mm²; жълт

1.1.2 DIN-rail

1.1.2.1 Mounting accessories



Артикул номер: 210-198

Медна носеща шина; 35 x 15 mm; 2,3 mm дебелина; дължина 2 m; без прорези; съгласно EN 60715; цвят мед

1.1.3 Ferrule

1.1.3.1 Ferrule



Артикул номер: 216-413

Накрайник; Втулка за 25 mm² / AWG 4; неизолиран; електр. калаено покритие; електролитна мед; газонепроницаем; съгл. DIN 46228, Част 1/08.92; сребрист



Артикул номер: 216-414

Накрайник; Втулка за 35 mm² / AWG 2; неизолиран; електр. калаено покритие; електролитна мед; газонепроницаем; съгл. DIN 46228, Част 1/08.92; сребрист



Артикул номер: 216-424

Накрайник; Втулка за 35 mm² / AWG 2; неизолиран; електр. калаено покритие; електролитна мед; газонепроницаем; съгл. DIN 46228, Част 1/08.92; сребрист



Артикул номер: 216-425

Накрайник; Втулка за 50 mm² / AWG 1; неизолиран; електр. калаено покритие; електролитна мед; газонепроницаем; съгл. DIN 46228, Част 1/08.92



Артикул номер: 216-435

Накрайник; Втулка за 50 mm² / AWG 1; неизолиран; електр. калаено покритие; електролитна мед; газонепроницаем; съгл. DIN 46228, Част 1/08.92

1.1.4 Installation

1.1.4.1 Mounting accessories



Артикул номер: 249-197

Безвинтов краен ограничител; 14 mm ширина; за DIN шина 35 x 15 и 35 x 7.5; сив



Артикул номер: 285-168

Фиксиращ елемент; за силнотоквени клеми 95 mm²; оранжев

1.1.5 Jumper

1.1.5.1 Jumper



Артикул номер: 285-495

Джъмпер; изолиран; сив

1.1.6 Marking

1.1.6.1 Group marker carrier



Артикул номер: 249-105

Държач за група маркировъчни табелки; сив

1.1.7 Power tap

1.1.7.1 Power tap



Артикул номер: 285-407

Устройство за измерване на мощност; за силнотоккови клеми 95 mm²; 10,00 mm²; сив

1.1.8 Protective warning marker

1.1.8.1 Cover



Артикул номер: 285-175

Защитно-предупредителен маркер; жълт



Артикул номер: 285-170

Защитно-предупредителен маркер; със символ на високо напрежение, черно; жълт

1.1.9 Tool

1.1.9.1 Operating tool



Артикул номер: 285-172

Шестограмен ключ; с частично изолирана дръжка; зелен

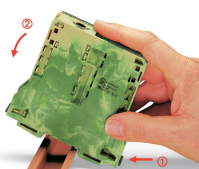


Артикул номер: 285-173

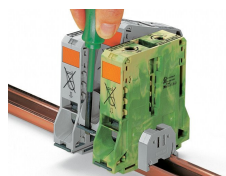
Шестограмен ключ; с частично изолирана дръжка; със защита срещу въртене; зелен

Бележки за инсталиране

Installation



Firmly snap a ground conductor terminal block onto DIN-rail. The contact foot is automatically secured on the rail, providing the appropriate power grounding connection.



Removing a terminal block from the assembly (to the left or to the right).



Grounding foot:
Ground conductor terminal blocks (limited to max. 120 mm²/250 kcmil per EN 60947-7-2) must be snapped onto a 2.3 mm thick copper DIN-rail.

Conductor termination



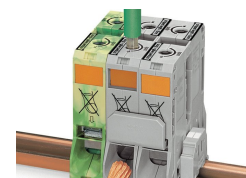
For the optimal clamping force: Bend conductor Cut conductor to length (conductor end must be straight) Strip conductor



Always observe the on-unit printed strip length guide!



Conductor termination – step 1: Rotate the T-wrench counter-clockwise to the stop. Next, push in the orange locking tab. The clamp is locked open for hands-free wiring.

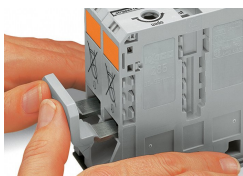


Conductor termination – step 2: Insert a stripped conductor into the clamping unit until it hits the backstop. Hold in this position.

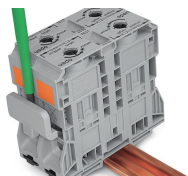


Conductor termination – step 3: A short counter-clockwise rotation releases the tab. When unlocked, the T-wrench rotates clockwise, securely clamping the conductor.

Commoning



Commoning with an adjacent jumper: insert the jumper above the conductor entry hole – prior to conductor termination. The nominal cross-section remains unchanged.



Removing jumper via operating tool.

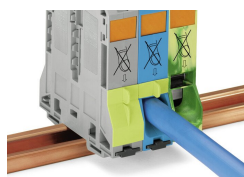


No power taps and jumpers are required for the distribution of the ground potential. The ground conductor terminal blocks are directly connected to each other via the DIN-rail.

Cover

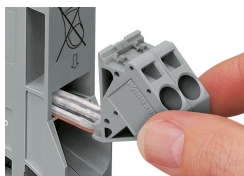


Protective warning marker may indicate: Notice: Power is still on even after switching off the main switch!



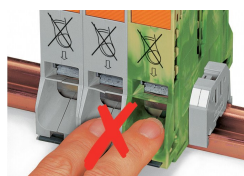
Yellow, detachable finger guards provide touch-proof safety by shielding jumper contact slots and/or unused conductor entries.

Power tap



Easily and consistently tap directly into the power supply. Insert the unwired tap before opening the clamping unit.

Security

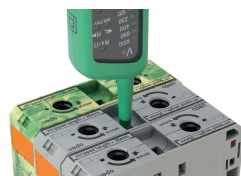


Risk of Injury!
Do not insert fingers in the conductor entry!

Testing

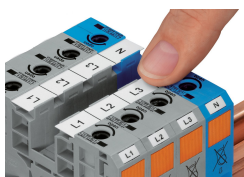


Testing via touch-proof 4 mm Ø test plugs (not available from WAGO, but offered by industry suppliers such as, Multi-Contact Deutschland GmbH).

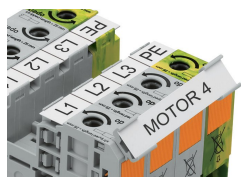


Testing Voltage measurements can be performed, e.g., using a 2-pole voltage tester (206-707).

Marking



WMB markers or self-adhesive, printable marking strips can be accommodated on 35, 50 and 95 mm² high-current terminal blocks.



Marker carrier (285-442) for marking strips (2009-110) or 2 WMB markers for 285-13x, 285-15x and 285-19x Terminal Blocks