

**EC625SP5**



**POLE MOUNT KIT (2 UNITS) - FOR BOARDS OF SIZES 5 AND 6**

Enclosures > Wall-mount > Grp enclosures > Accessories > Accessories for distribution board > Pole mount kit

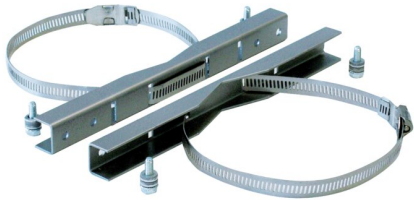


IMMAGINE RAPPRESENTATIVA **EC** REPRESENTATIVE IMAGE

**Technical Symbols/Marks/Approvals**

IP66	GWT 960°	UL94 V0	IK10	HF		CE	RoHS II
	MADE IN ITALY						

**Norms**

EN 62208

**Etim**

**GROUP EG000011 - Enclosures/cabinets**

**CLASS EC002620 - Components for installation (enclosure/cabinet)**

<b>Material</b>	Metal	<b>Colour</b>	Zinc	<b>Width</b>	562 mm
<b>Height</b>	35 mm	<b>Depth</b>	20 mm	<b>Model</b>	Other
<b>Max. load capacity</b>	100 kg				

**Documentation available for download**

**Instruction booklet**  
625SP\_R.pdf

**Certification**  
Serie 625  
IMQ\_CA02.06897\_2024.pdf

**Brochure**  
Quadri Poliestere IT.pdf

**Brochure**  
Quadri Poliestere\_ENG.pdf

## Barcode



8053676577897

**Unit**

1 NR

1.348 [kg]