



Junction boxes: IP55 junction box 300x220x120mm

V55109

System infrastructure / Enclosures and control units / Junction boxes /
Surface mounting

IP55 junction box 300x220x120mm

Surface mounting junction box with cable entries, cover closed with stainless steel screws, RAL 7035 grey. Supplied with two hinges. Dimensions 300x220x120 mm

Product Status

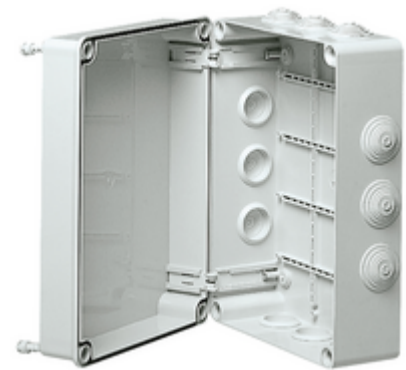
3 - Active

Minimum order quantity

6 NR

Sheets, Manuals, Documentation

- [Multilanguage instructions sheet \(54 kb\)](#)



Technical data

- **Class group:** Connection material (electrotechnical)
- **Class:** Box/housing for surface mounting on the wall/ceiling
- **Max. conductor cross section:** 0
- **Equipped with:** None
- **Shape:** Rectangular
- **Mounting method:** Wall-/ceiling mounting
- **Mounting in the soil:** No
- **Mounting under water:** No
- **For tube diameter:** 20/25 mm
- **Inlet from the rear:** No
- **Length:** 300,00 mm
- **Width:** 248,00 mm
- **Depth:** 127,00 mm
- **Diameter:** 0 mm
- **Tackable:** No
- **Number of inlets:** 12
- **Type of housing feed-through:** Trimmable step membrane
- **Material:** Plastic
- **Halogen free:** No
- **Surface protection:** Untreated
- **Colour:** Grey
- **Degree of protection (IP):** IP55
- **Cover model:** Blind cover
- **Transparent cover:** No
- **Cover attachment:** Screwed
- **Castable:** No
- **With casting compound:** No
- **Sealable:** No
- **Rated insulation voltage Ui:** 450 V
- **Circuit integrity:** None
- **With screening:** No
- **Weatherproof:** Yes
- **Operating temperature:** 0 - 60 °C
- **Explosion-tested version:** No
- **For Ex-zone gas:** None
- **For Ex-Zone dust:** None

Certifications

- 00. CE Marking - EU
- 01. IMQ - Italy ([download](#))
- 43. UKCA mark - Great Britain
- 96. Electrotechnical expert ([download](#))

Packaging



Code 8007352079076
Quantity 1 NR
Dim. 32.7x24.7x12.7 [cm]
Weight 979.13 [g]

Code 8007352079083
Quantity 6 NR
Dim. 41x61x35 [cm]
Weight 6,843.33 [g]

Legal

Vimar reserves the right to change at any time and without notice the characteristics of the products reported. Installation should be carried out by qualified staff in compliance with the current regulations regarding the installation of electrical equipment in the country where the products are installed. For the terms of use of the information on the product info sheet see [Conditions of Use](#).