

**EC690555**



**ADAPTOR 16A 2P+E INDUSTRIAL IP67 TO SCHUKO 2P**

Industrial > Plugs and sockets > Multiple way connectors and adaptors > Plug-socket adaptors > Cee socket outlet combination (iec 60309) > Series klect - schuko sockets to cee



IMMAGINE RAPPRESENTATIVA EC REPRESENTATIVE IMAGE

**Technical Symbols/Marks/Approvals**

IP67    CE    RoHS II       MADE IN EU

**Norms**

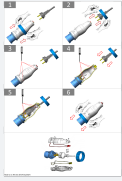
EN 60309-1    EN 60309-2

**Etim**

**GROUP EG000014 - Industrial sockets/plug applications**  
**CLASS EC000379 - CEE socket outlet combination (IEC 60309)**

Degree of protection (IP)	IP67	Colour	Grey	Housing material	Plastic
Contact material	CuZn	Surface coating contacts	Untreated	Military model	No
Number of socket outlets with protective contact CEE 7/3 (type F)	0	Number of socket outlets Swiss standard type 13	0	Number of socket outlets Swiss standard type 15	0
Number of socket outlets Swiss standard type 23	0	Number of socket outlets Swiss standard type 25	0	Type of mains connection	CEE 16 A
Cable length	0 m	Protection	None	Number of socket outlets Danish standard (earthing pin, type K)	0
CEE socket outlet 16 A	None	CEE socket outlet 32 A	None	CEE socket outlet 63 A	None
CEE socket outlet 125 A	None	Other fixtures and/or empty locations	0	Earth leakage switch	None
Number of miniature circuit breakers (MCB)	0	Power supply/connection possibility	Other	Number of poles mains connection	3
Handling	Portable				

## Documentation available for download



**Instruction booklet**

Istruzioni  
EC690550-555.pdf

## Barcode



8050507873487

**Unit**

1 NR

0.07x0.07x0.17 [m]

0.205 [kg]



8050507876235

**Cardboard**

12 NR

0.26x0.32x0.16 [m]

2.46 [kg]