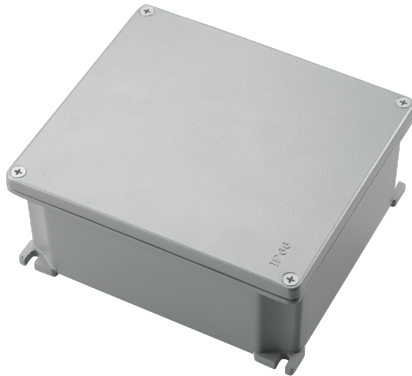


## EC485C1

### ALUMINIUM WALL-MOUNT JUNCTION BOX 90X90X53 mm



Enclosures > Wall-mount > Wall-mount junction boxes > Series 485 - aluminium boxes > Junction boxes

#### Technical Symbols/Marks/Approvals

IP66

IK07

MADE  
IN  
ITALY

#### Norms

EN 60670-1 EN 60670-22

#### Etim

GROUP EG000048 - Connection material (electrotechnical)

CLASS EC002600 - Box/housing for surface mounting on the wall/ceiling

<b>Mounting method</b>	Wall-/ceiling mounting	<b>Degree of protection (IP)</b>	IP66	<b>Material</b>	Aluminium
<b>Halogen free</b>	Yes	<b>Surface protection</b>	Lacquered	<b>Colour</b>	Grey
<b>Width</b>	90 mm	<b>Depth</b>	53 mm	<b>Model</b>	Junction box
<b>Length</b>	90 mm	<b>Working temperature</b>	-40-125 °C	<b>Explosion-tested version</b>	No
<b>For Ex-zone gas</b>	None	<b>For Ex-zone dust</b>	None	<b>Cover model</b>	Blind cover
<b>Circuit integrity</b>	None	<b>Equipped with</b>	Potential equalization	<b>Shape</b>	Rectangular
<b>Number of inlets</b>	0	<b>Inlet from the rear</b>	No	<b>Transparent cover</b>	No
<b>Connectable</b>	No	<b>Mounting in the soil</b>	No	<b>Mounting under water</b>	No
<b>Type of housing feed-through</b>	None	<b>Cover attachment</b>	Screwed	<b>Castable</b>	Yes
<b>Casting compound included</b>	No	<b>Sealable</b>	No	<b>With screening</b>	No
<b>Weatherproof</b>	Yes				

## Barcode



8033954874214

**Unit**

1 NR

0.2813 [kg]



8059307214124

**Cardboard**

32 NR

9.0016 [kg]