

Информационен лист | Номер на артикул: 2773-2401/995-020

Противоположна инсталационна клема; за твърди и фино усукани проводници; макс. 4 mm²; 2-проводн.; прозрачният корпус; Прозрачен капак; Температура на околния въздух: макс. 85°C (T85); 4,00 mm²; прозрачен

<https://www.wago.com/2773-2401/995-020>



Цвят: прозрачен

Notes

Safety management note

ЗАБЕЛЕЖКА: Спазвайте инструкциите за монтаж и безопасност!

- Да се използва само от електротехници!
- Не работете под напрежение/натоварване!
- Използвайте само за правилна употреба!
- Спазвайте националните разпоредби/стандарти/указания!
- Спазвайте техническите спецификации на продуктите!
- Спазвайте броя на допустимите потенциали!
- Не използвайте повредени/замърсени компоненти!
- Съобразявайте видовете проводници, напречните сечения и дължината на кабела!
- Вкарайте проводника до упор!
- Използвайте оригинални аксесоари!

Да се продава само с инструкции за монтаж!

Electrical data

Ratings per	EN 60664		
Overtoltage category	III	III	II
Pollution degree	3	2	2
Nominal voltage	-	-	450 V
Rated surge voltage	-	-	4 kV
Rated current	-	-	32 A

Approvals per	UL 486C		
Use group	B	C	D
Rated voltage	-	600 V	-
Rated current	-	20 A	-

Connection data

Clamping units	2
Total number of potentials	1

Connection 1	
Connection technology	PUSH WIRE®
Actuation type	Push-in
Solid conductor	0,75 ... 4 mm ² / 18 ... 12 AWG
Stranded conductor	1,5 ... 4 mm ²
Fine-stranded conductor; with insulated ferrule	0,75 ... 1,5 mm ² / 18 ... 16 AWG
Fine-stranded conductor; with uninsulated ferrule	1 ... 1,5 mm ² / 16 AWG
Conductor diameter	1,6 ... 2 mm / 18 ... 12 AWG

Connection 1

Strip length 10 ... 11 mm / 0.39 ... 0.43 inches

Wiring direction Side-entry wiring

Physical data

Width 6,15 mm / 0.242 inches

Height 6,8 mm / 0.268 inches

Depth 29,5 mm / 1.161 inches

Material data

Note (material data)

[Информация за спецификациите на материалите можете да намерите ТУК](#)

Color прозрачен

Cover color transparent

Material group IIIa

Insulation material (main housing) Polycarbonate (PC)

Flammability class per UL94 V2

Clamping spring material Хром-никелова пружинна стомана (CrNi)

Contact material Electrolytic copper (E_{Cu})

Contact Plating Калаено

Fire load 0.038 MJ

Weight of insulation material 0.8 g

Weight 1.5 g

Environmental requirements

Ambient temperature (operation) +85 °C

Processing temperature -35 ... +60 °C

Continuous operating temperature 105 °C

Commercial data

ETIM 9.0 EC000446

ETIM 8.0 EC000446

PU (SPU) 360 (20) бр.

Packaging type Блистер

Country of origin DE

GTIN 4066966349115

Customs tariff number 85369010000

Environmental Product Compliance

RoHS Compliance Status Compliant, No Exemption

1 Съвместими продукти

1.1 Допълнителни аксесоари

1.1.1 General accessories

1.1.1.1 Installation terminal block



Артикул №: 207-5485/316-000

Комплект за ремонт на кабел; за многожилни кабели; Прав; с лепило; Диаметър на кабела 8 - 24 mm; със затворени инсталационни клеми; Средна дебелина; черен

Бележки за инсталиране

Conductor termination



Strip conductor to 10 mm.



Insert the conductor.



Check for the correct conductor position.

Conductor removal

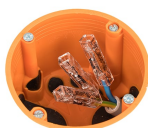


Twist the connector alternately left and right while pulling it off the conductor.

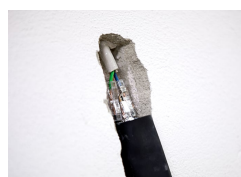
Application



Wiring conductors in a flush-mounted junction box.



Extending short wires.



Use with a shrink tube



Use of the inline splicing connector (for plugging in with a shrink tube) in the cable repair set 207-5485/316-000.

Application

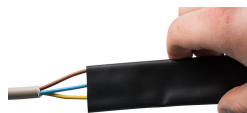


Damaged cable

Strip the damaged cable approx. 10 cm uniformly around the damaged area.

Cut out the damaged areas in the copper and disconnect all other conductors. For damaged areas between 1 mm and 30 mm, at least 30 mm of the damaged conductor must be removed. Tip: A connector (approx. 30 mm long) can be used as a length guide.

Strip conductor and conductor bridge to 10 mm specified and insert into connector. Only one connector is required for damage points < 1 mm or conductors with a flat cut. Two connectors with wire jumpers must be used for damage points > 1 mm.



Strip 10 mm conductor per specification and insert connector (example shows staggered connectors).

Pull the shrink tube over the cable end.

The shrink tube must have an overlap length of at least 30 mm on the cable sheath.

Heat the shrink tube evenly with a hot air blower between 110°C and 200°C.



The shrinking process is only completed when the shrink tube is tightly connected to the cable and the adhesive has visibly melted (see photo).