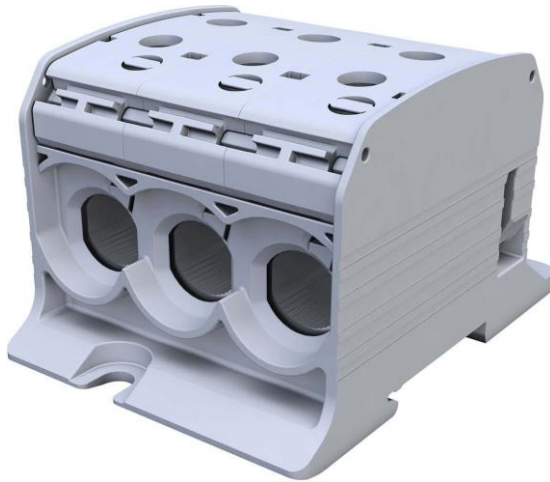


STB 95-3 grey

Rail-mounted screw terminal block Al/Cu 87560, single-pole, 95 mm², 6 holes

SIMBLOCK®



Catalogue number	81103002
EAN code	5907813232749
Name of item	STB 95-3 grey
Collective packaging	1
Unit	pc

TECHNICAL SPECIFICATIONS

Colour	grey
Width	68.6 mm
Height	57 mm
Length	95 mm
Rated cross-section (solid wire)	6 x (16...95) mm ²
Rated cross-section (stranded wire)	6 x (10...70) mm ²
Measurement connector (solid wire)	3 x (1.5...10) mm ²
Measurement connector (stranded wire with ferrule)	3 x (1.5...6) mm ²
Rated current	232 A (Cu) / 200 A (Al)
Rated voltage	1000 V AC / 1000 V DC
Number of tracks	1
Mounting	on TS 35 rail, on the mounting plate
Set screw - bolt	M14
Stripped wire length	26 mm
Compliance with standards	IEC 60947-7-1
Compliance with directives	RoHS
Additional information	The connector has an additional measurement connector. The dedicated dust cover OSTB 95 allows easy access to the measurement connector.

ACCESSORIES

OSTB 95 grey - catalogue number 81902002
Dust cover for terminal blocks STB 95

TS 35 metallic - catalogue number 80035000
Installation rail TS 35

Noalox - catalogue number 88999006
Contact grease for Al/Al and Al/Cu connectors, 236 ml