



Lima G2

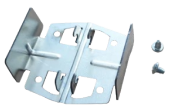
- Elegant linear luminaire with premium aluminium housing — available in Aluminium or Black finish
- Connection kit accessory to create continuous lines available
- Modular connection options with L-, T-, X- and I-connectors — ideal for continuous lines or custom layout designs
- UGR < 19 in all versions for comfortable visual comfort
- Suspension kit including transparent cable available as accessory



Specifications

Item Code	Item Description	Equivalent to (W)	Power (W)	Lumen (lm)	Efficacy (lm/W)	CCT (K)	RAL-Number	Net Weight (kg/pc)
DALI2								
529000318900	LEDLima-P2 L15-33W-DALI-830/840-U19-AL TL 1x54W	33	4290	130	3K/4K	7036	3.7	

Accessories



529098052800
Lima I-connection-G2



529098053700
LEDLima-P2-Lens-12m

Packaging information

Item			Box			
Item Code	Item Description	EU HS Code	Dimensions (mm) (LxWxH)	Gross Weight (kg/pc)	EAN	pc/box
529000318900	LEDLima-P2 L15-33W-DALI-830/840-U19-AL	94051190	0x0x0	0.00	6937209629883	1
542098001000	LEDTrunking DALI Power Supply	85044083	198x54x39	0.24	6945730496614	1
529098052800	Lima I-connection-G2	94059900	0x0x0	0.00	6937209634009	1
529098053200	Lima L-connection-G2-AL	94059900	0x0x0	0.00	6937209634047	1
529098053300	Lima T-connection-G2-AL	94059900	0x0x0	0.00	6937209634054	1
529098053400	Lima X-connection-G2-AL	94059900	0x0x0	0.00	6937209634061	1
529098053600	LEDLima-P2-Canopy-AL	94059900	0x0x0	0.00	6937209634085	1
529098053700	LEDLima-P2-Lens-12m	94059200	0x0x0	0.00	6937209634092	1

Technical Specifications	
Lifetime (L70)	100,000 h
Lifetime (L80)	70,000 h
On-/Off-cycles	100,000
Dimmability	DALI2
Beam angle	90 °
Finishing	Aluminum
Colour rendering index (CRI)	> 80
UGR	19
Impact strength (IK)	IK03
Protection class	I
Risk group (EN 62471)	RG0
With control gear	True
Glow wire test	650 °C
Driver failure rate (at 5,000 hrs)	≤ 1 %
Power factor	≥ 0.9

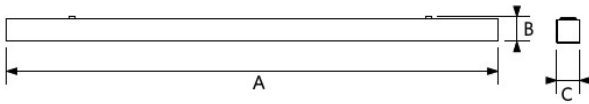
Electrical Supply	
Frequency	50 - 60 Hz
Nominal voltage	220 - 240 V
DC input voltage	See catalogue appendix Connection Specifications

Mechanical Properties	
Housing material	Aluminium

Ambient Conditions	
Operating temperature	-10 ~ 45 °C
Application temperature	25 °C
Storage environment	-25 ~ 50 °C



Dimensional Drawing (mm)



Type	A	B	C
Lima	607	70	85