



Lima G2

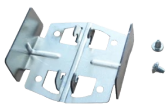
- Elegant linear luminaire with premium aluminium housing — available in Aluminium or Black finish
- Connection kit accessory to create continuous lines available
- Modular connection options with L-, T-, X- and I-connectors — ideal for continuous lines or custom layout designs
- UGR < 19 in all versions for comfortable visual comfort
- Suspension kit including transparent cable available as accessory



Specifications

Item Code	Item Description	Equivalent to (W)	Power (W)	Lumen (lm)	Efficacy (lm/W)	CCT (K)	RAL-Number	Net Weight (kg/pc)
DALI2								
529000319500	LEDLima-P2 L15-23W-DALI-830/840-D-U19-BL	TL 1x35W	23	2300	100	3K/4K	9004	3.6

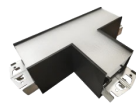
Accessories



529098052800
Lima I-connection-G2



529098052900
Lima L-connection-G2-BL



529098053000
Lima T-connection-G2-BL



529098053100
Lima X-connection-G2-BL



529098053500
LEDLima-P2-Canopy-BL



529098053700
LEDLima-P2-Lens-12m

Packaging information

Item			Box			
Item Code	Item Description	EU HS Code	Dimensions (mm) (LxWxH)	Gross Weight (kg/pc)	EAN	pc/box
529000319500	LEDLima-P2 L15-23W-DALI-830/840-D-U19-BL	94051190	1542x110x125	3.85	6937209629944	1
542098001000	LEDTrunking DALI Power Supply	85044083	198x54x39	0.24	6945730496614	1
529098052800	Lima I-connection-G2	94059900	102x106x63	0.20	6937209634009	1
529098052900	Lima L-connection-G2-BL	94059900	187x187x125	0.70	6937209634016	1
529098053000	Lima T-connection-G2-BL	94059900	264x186x125	0.86	6937209634023	1
529098053100	Lima X-connection-G2-BL	94059900	264x264x125	0.94	6937209634030	1
529098053500	LEDLima-P2-Canopy-BL	94059900	160x160x80	0.75	6937209634078	1
529098053700	LEDLima-P2-Lens-12m	94059200	12040x106x41	1.35	6937209634092	1

Technical Specifications

Lifetime (L70)	100,000 h
Lifetime (L80)	70,000 h
On-/Off-cycles	100,000
Dimmability	DALI2
Beam angle	90 °
Finishing	Black RAL 9004
Colour rendering index (CRI)	> 80
UGR	19
Impact strength (IK)	IK03
Protection class	I
Risk group (EN 62471)	RG0
With control gear	True
Glow wire test	650 °C
Driver failure rate (at 5,000 hrs)	≤ 1 %
Power factor	≥ 0.9

Electrical Supply

Frequency	50 - 60 Hz
Nominal voltage	220 - 240 V
DC input voltage	See catalogue appendix Connection Specifications

Mechanical Properties

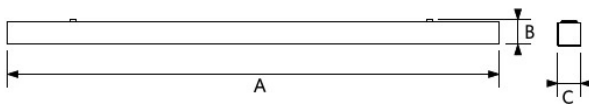
Housing material	Aluminium
------------------	-----------

Ambient Conditions

Operating temperature	-10 - 45 °C
Application temperature	25 °C
Storage environment	-25 - 50 °C



Dimensional Drawing (mm)



Type	A	B	C
Lima	607	70	85